



## Brockley Cross, SE4

### £250,000

Located in the heart of Brockley, this well-presented 32 sq m studio apartment offers a stylish and efficient living space in one of South East London's most vibrant neighbourhoods. The apartment is set within a well-maintained building with easy access to local amenities including independent cafes, restaurants, galleries, and green spaces like Hilly Fields Park-all within walking distance.

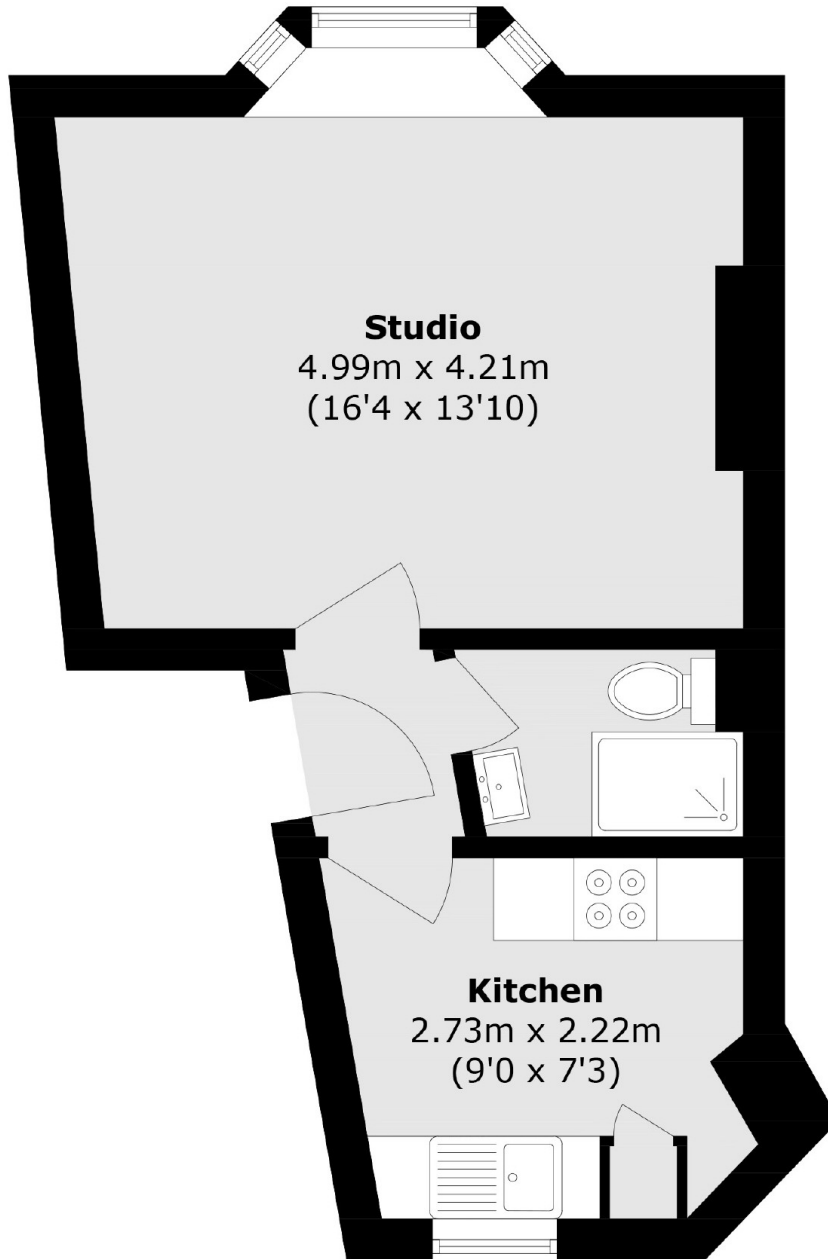
Whether you're looking for a London pied-à-terre, a buy-to-let opportunity, or a compact, low-maintenance home, this studio is an excellent choice in a sought-after SE4 location.

Situated on Brockley Cross, the property is ideally positioned just moments from Brockley Station (Overground & National Rail) providing fast links into London Bridge, Shoreditch, and Canary Wharf. Whether you're a first-time buyer, investor, or commuter, this apartment offers a perfect blend of comfort and connectivity.

### Features

- Victorian Conversion
- Studio Apartment
- Contemporary Decor
- Excellent Transport Links
- Bright And Open Plan
- Separate Kitchen

# Brockley Cross, London, SE4



Total area (approx.): 31.9 sq. m (343.3 sq. ft)