





# Willow Mews London Road

Waterlooville, PO8 8BU

- STYLISH DETACHED FAMILY HOME
- SOUTH FACING GARDEN & DRIVEWAY PARKING
- EXCLUSIVE DEVELOPMENT OF THREE HOMES
- OPEN PLAN KITCHEN WITH BI-FOLD DOORS
- FOUR BEDROOMS WITH EN-SUITE TO MASTER
- MODERN FAMILY BATHROOM & CLOAKROOM
- BUILT BY WILSON DESIGNER HOMES IN 2017
- B RATED EPC WITH UNDERFLOOR HEATING

Tucked away within an exclusive and highly regarded development of just three executive homes, this beautifully presented detached family residence was constructed by Wilson Designer Homes in 2017 and offers a superb blend of contemporary design, high specification and practical family living.



Upon entering, a bright and spacious entrance hall sets the tone, leading to a versatile study ideal for home working, alongside a useful cloakroom. The sitting room is a warm and inviting space, centred around a feature fireplace and enjoying a pleasant outlook to the rear with direct access to the garden.

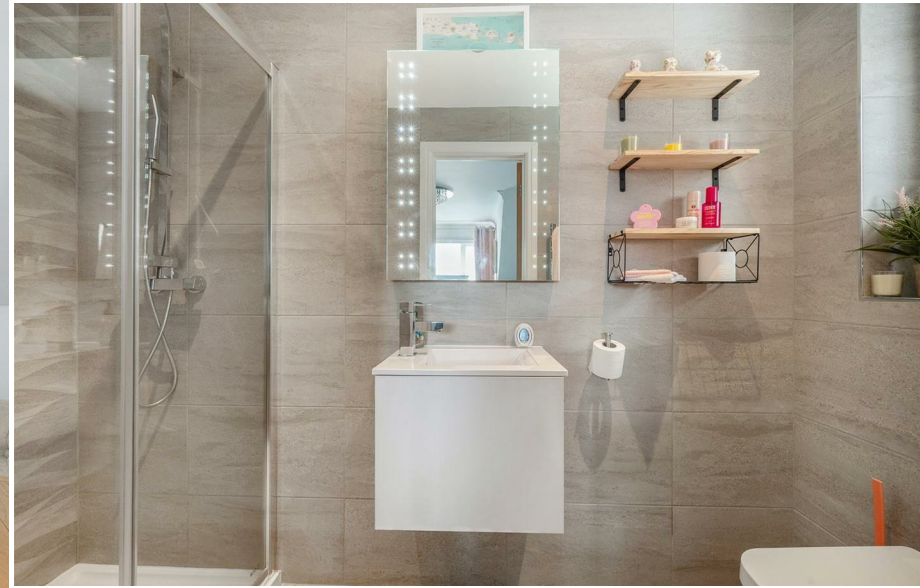
Undoubtedly the heart of the home is the stunning open-plan kitchen/dining room, thoughtfully designed for both everyday living and entertaining. The kitchen is fitted with a comprehensive range of high-quality units, integrated appliances and a central island, all complemented by sleek worktops. There is ample space for dining, with bi-fold doors opening seamlessly onto the garden terrace, allowing natural light to flood the space and creating a wonderful indoor-outdoor connection.

The ground floor benefits from wet underfloor heating, enhancing both comfort and energy efficiency, reflected in the property's impressive B-rated EPC.

Upstairs, the first floor continues to impress with four well-proportioned bedrooms. The principal bedroom is a generous double, complemented by a stylish en-suite, while the remaining bedrooms are served by a contemporary family bathroom, all finished to an excellent standard.

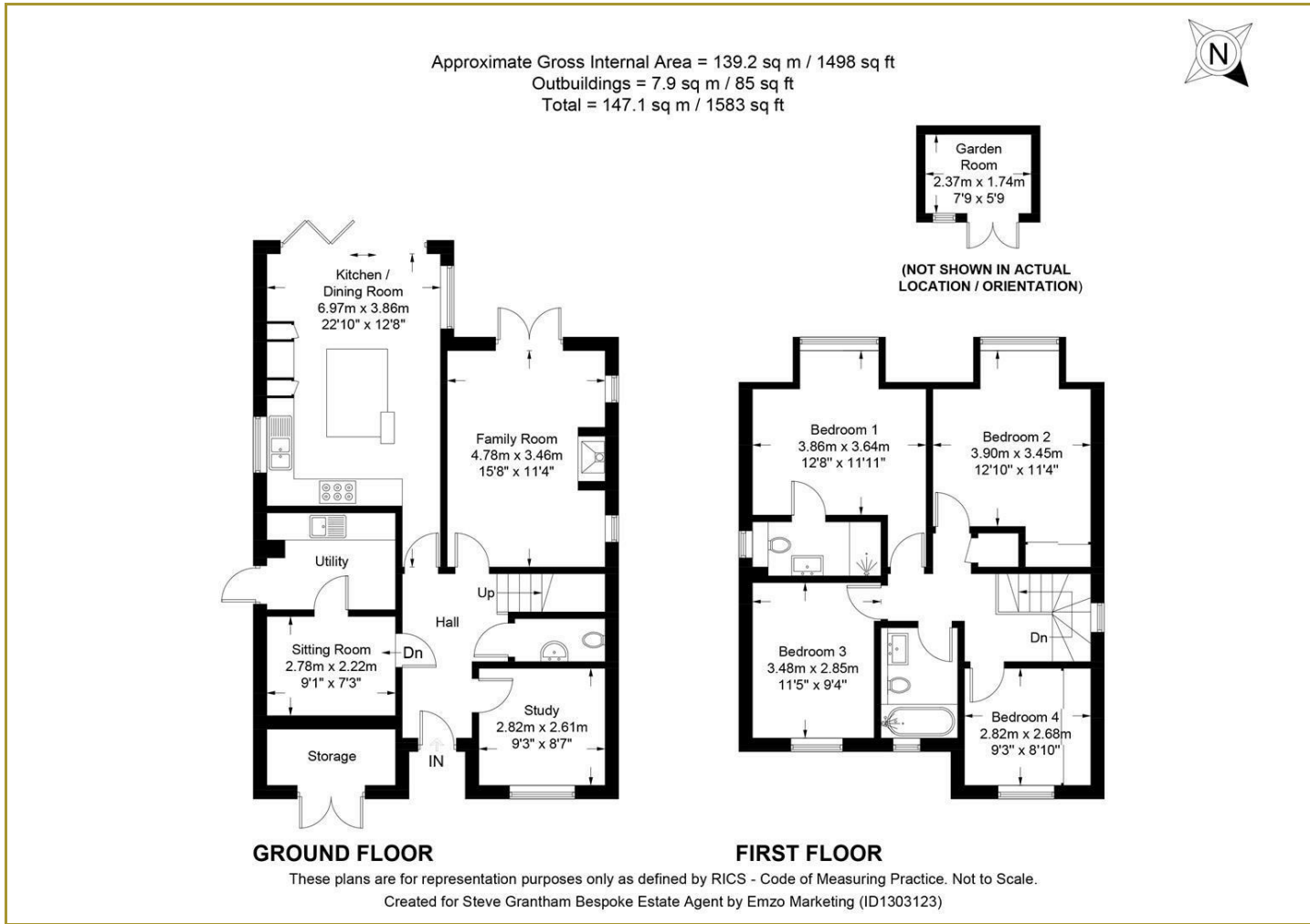
Externally, the south-facing rear garden is a particular highlight, enjoying a sunny aspect throughout the day. It has been designed for ease of maintenance, with a spacious patio and garden room that is ideal for outdoor dining and entertaining, leading onto a lawned garden with borders, all enclosed to provide a safe and private environment for families.



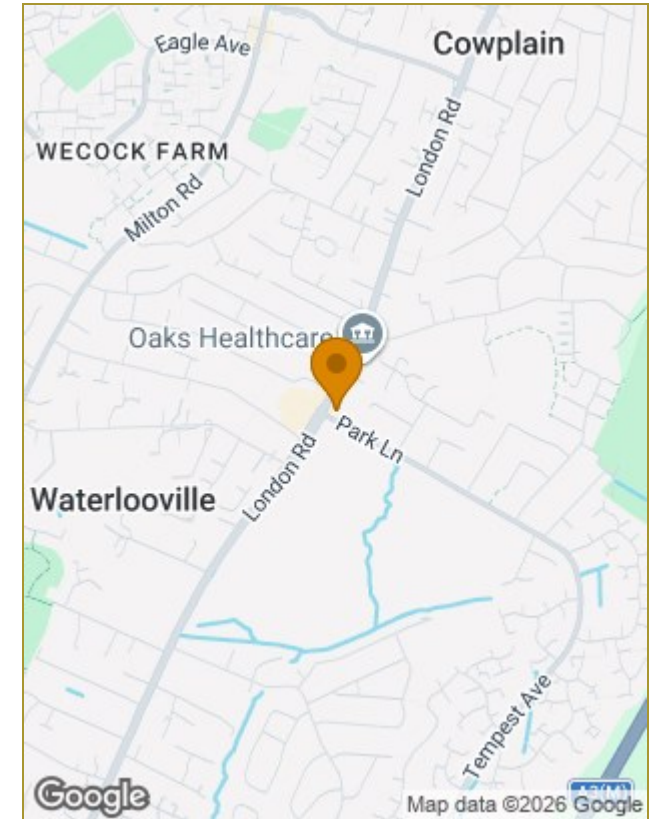




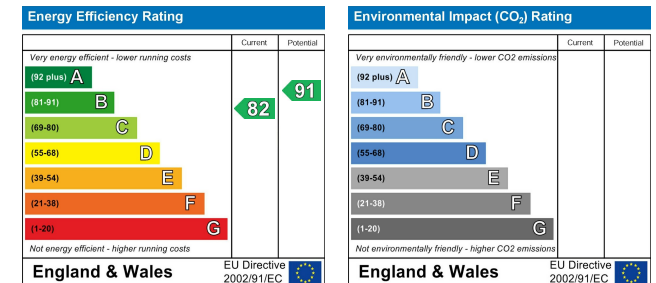
# Floor Plans



# Location Map



# Energy Performance Graph



Should a purchaser(s) have an offer accepted on a property marketed by Steve Grantham Bespoke Estate Agent, they will need to undertake an identification check. This is done to meet our obligation under Anti Money Laundering Regulations (AML) and is a legal requirement. We use a specialist third party service to verify your identity. The cost of these checks is £30 inc. VAT per named purchaser, which is paid in advance, when an offer is agreed and prior to a sales memorandum being issued. This charge is non-refundable under any circumstances.

The particulars are set out as a general outline only for the guidance of intended purchasers or lessees, and do not constitute, any part of a contract. Nothing in these particulars shall be deemed to be a statement that the property is in good structural condition or otherwise nor that any of the services, appliances, equipment or facilities are in good working order. Purchasers should satisfy themselves of this prior to purchasing.