



## Sylvester Road, N2

£2,450 Per calendar month

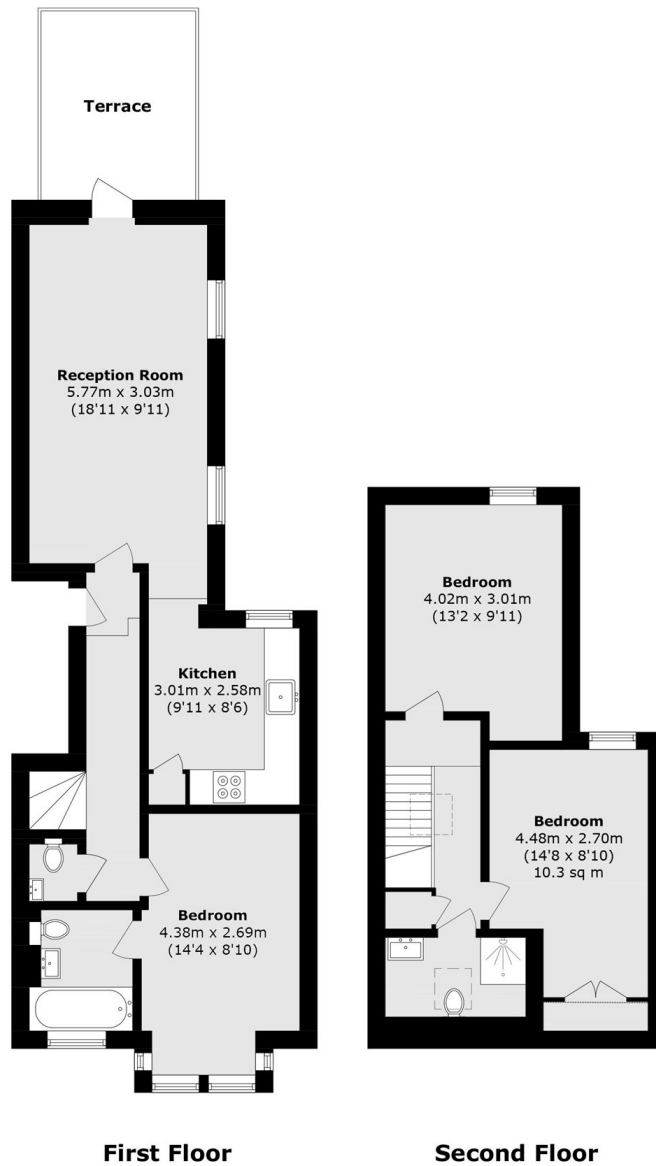
This beautifully presented first-floor duplex conversion offers three double bedrooms and two bathrooms, arranged over two levels and extending to approximately 890 sq ft. Finished to a high specification, the property features a spacious lounge of around 19ft opening onto a private decked roof terrace, a sleek modern kitchen with quartz worktops, and a principal bedroom with high ceilings and a contemporary en-suite. Additional benefits include a guest WC and ample storage.

Situated on a tree-lined turning just off East Finchley High Road, the apartment is moments from a wide range of local shops, cafés, and everyday amenities. East Finchley is well regarded for its strong community feel and excellent transport connections, providing easy access into Central London and beyond. The area also offers nearby parks and reputable schools, making it a highly desirable North London location.

### Features

- 3 Bedrooms
- 2 Bathrooms
- Split Level
- Duplex
- Terrace
- Furnished

# Sylvester Road, LONDON, N2



Total area (approx.): 84.5 sq. m (909.5 sq. ft)  
Terrace area (approx.): 8.4 sq m (90.4 sq ft)