



enfields

enfields by the
estate agents
100% guaranteed
home with 100% cash
020 884 4000
enfields.com

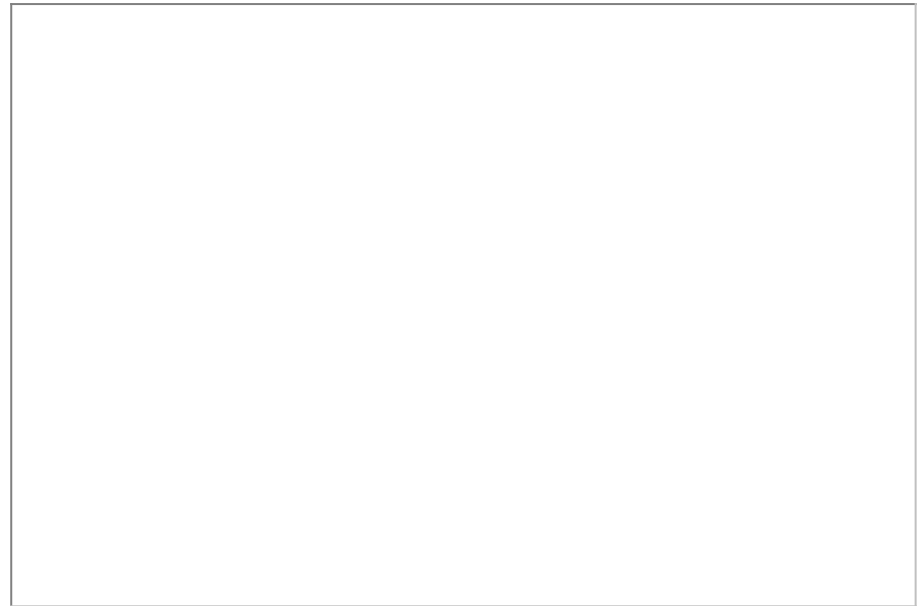
Shirley Road, Southampton, SO15 3JB

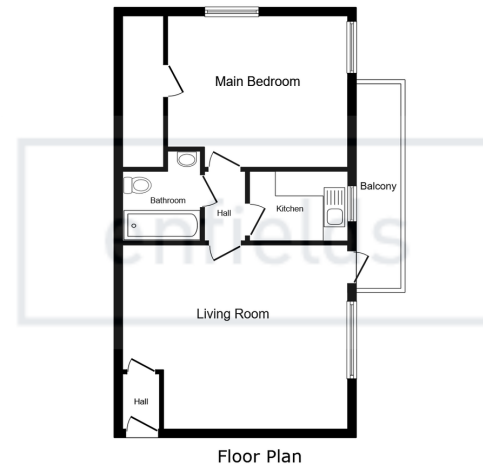
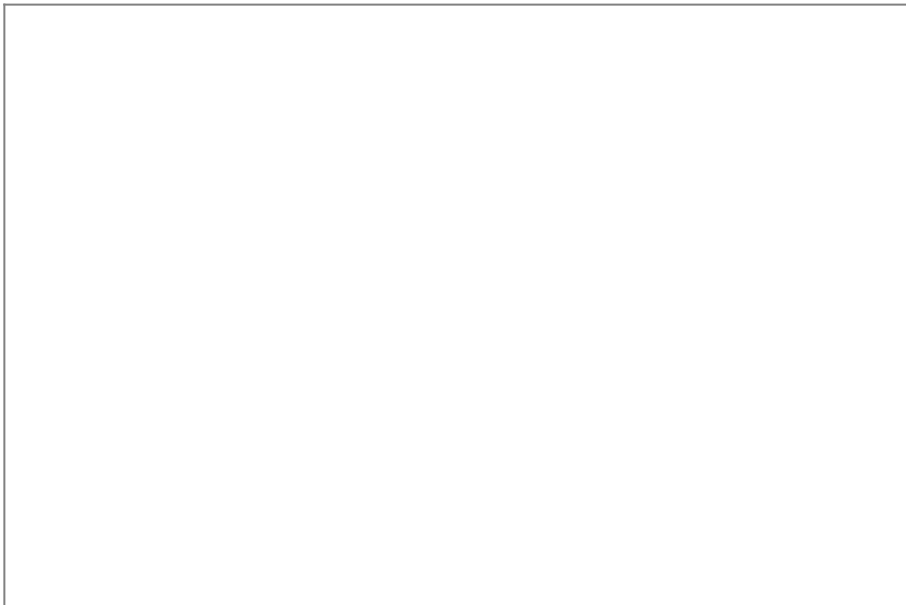
Offers Over £100,000

1 1 1



- ONE BEDROOM TOP FLOOR APARTMENT
- SOUGHT AFTER BLOCK AND LOCATION
- CLOSE TO ALL AMENITIES ON SHIRLEY HIGH STREET
- GREAT INVESTMENT OR FIRST TIME BUY
- PARKING AREA
- BALCONY
- DOUBLE BEDROOM
- CLOSE TO TRAIN STATION
- CLOSE OT GENERAL HOSPITAL
- MUST SEE





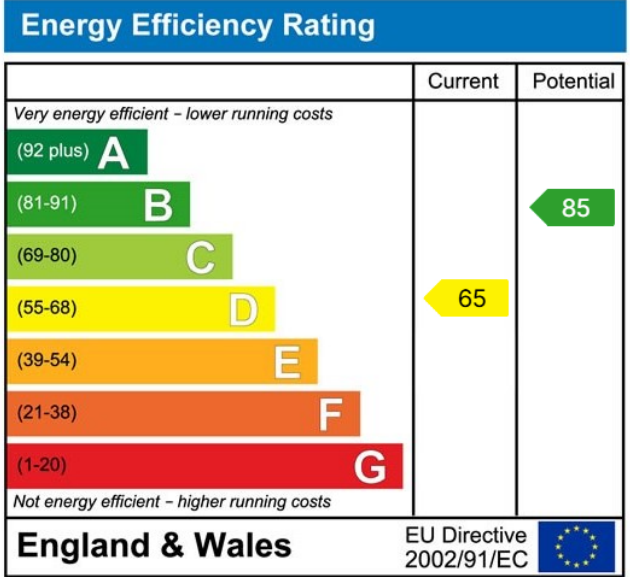
Floor Plan

This floor plan is for illustrative purposes only. It is not drawn to scale. Any measurements, floor areas (including any total floor area), openings and orientations are approximate. No details are guaranteed, they cannot be relied upon for any purpose and do not form any part of any agreement. No liability is taken for any error, omission or misstatement. A party must rely upon its own inspection(s). Powered by www.Propertybox.io



Guide Price: £110,000

This one-bedroom top-floor apartment with off road parking is located within the highly sought-after Lumsden Mansions development. With its prime location this apartment represents an excellent opportunity for first-time buyers and investors.



www.enfields-southampton.co.uk



It is Enfields policy to respect any sole agency currently in force and we would not be able to commence marketing until this has expired or been terminated. If you fail to terminate any previous agreement you could be liable for two sets of fees. Enfields Hythe is a trading name of YTF LTD Registered office: 345 Shirley Road, Southampton, Hampshire, England, SO15 3JD. Company Registration No: 10459987. VAT Registration No: 281 2975 81.

Enfields Lettings - Embley Management LTD T/A Enfields. Registered Address: 345 Shirley Road, Southampton, Hampshire, England, SO15 3JD. Company Registration No: 14847604. VAT Registration No: 439 8546 45.