

Blind Lane, Tanworth-in-Arden, Solihull, B94 5HT

Offers Over £675,000

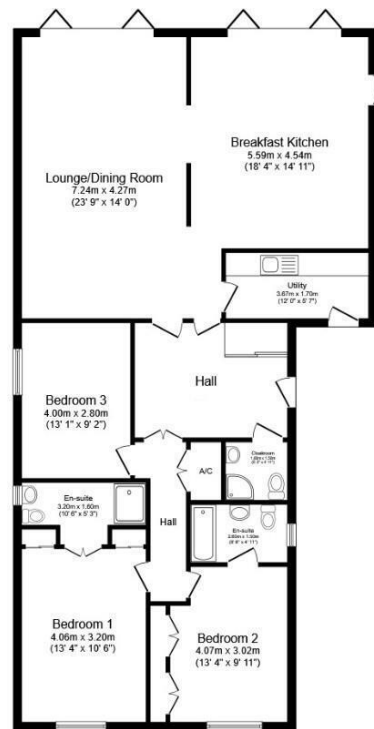
3 3 1



An exceptional extended three-bedroom detached bungalow situated in a sought-after semi-rural position on the edge of Tanworth in Arden, enjoying stunning views over open countryside to the rear.

Key Features

- Extended detached bungalow in a sought-after semi-rural location
- Two en-suite shower rooms plus cloakroom/shower room
- Contemporary breakfast kitchen with central island
- South-facing rear garden with countryside views
- Quiet location on the edge of Tanworth in Arden
- Three bedrooms
- Spacious lounge/dining room with bi-fold doors
- Separate utility room
- Detached single garage and driveway parking for multiple vehicles
- Beautifully presented throughout



Floor Plan

Floor area 135.3 sq.m. (1,456 sq.ft.)

Total floor area: 135.3 sq.m. (1,456 sq.ft.)

This floor plan is for illustrative purposes only. It is not drawn to scale. Any measurements, floor areas (including any total floor area), openings and orientations are approximate. No details are guaranteed, they cannot be relied upon for any purpose and do not form any part of any agreement. No liability is taken for any error, omission or misstatement. A party must rely upon its own inspection(s). Powered by www.Propertybox.io