



118 Skye Close
Orton Northgate PE2 6DL
£269,000



118 Skye Close Orton Northgate PE2 6DL

Situated overlooking an open green area, this linked semi-detached family home, enjoys a corner plot and comprises; Entrance Hall with a conveniently positioned Cloakroom, comfortable size Lounge, a separate Dining Room and a fitted Kitchen. The Landing leads to a Master Bedroom with an Ensuite Shower Room, three further Bedrooms and family Bathroom. Outside is an easy to maintain block paved garden and two allocated parking spaces. The property has gas radiator heating and PVCu double glazing. Well presented viewing is recommended.

Tenure Freehold
Council Tax C





Entrance Hall

Cloakroom

Lounge

17'7" + bay x 10'6" (5.38m + bay x 3.22m)

Dining Room

12'5"ax x 7'9" (3.81max x 2.37m)

Kitchen

10'9" min x 9'2" (3.29m min x 2.81m)

Landing

Bedroom 1

11'0" x 9'5" (3.36m x 2.89m)

Ensuite Shower Room

Bedroom 2

10'10" x 9'3" (3.32m x 2.83m)

Bedroom 3

8'2" x 7'8" (2.49m x 2.35m)

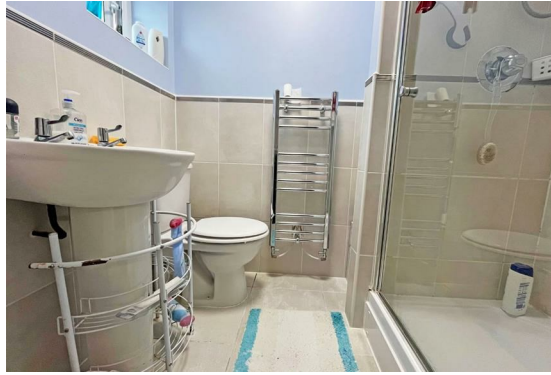
Bedroom 4

9'4" max x 6'7" min (2.87m max x 2.02m min)

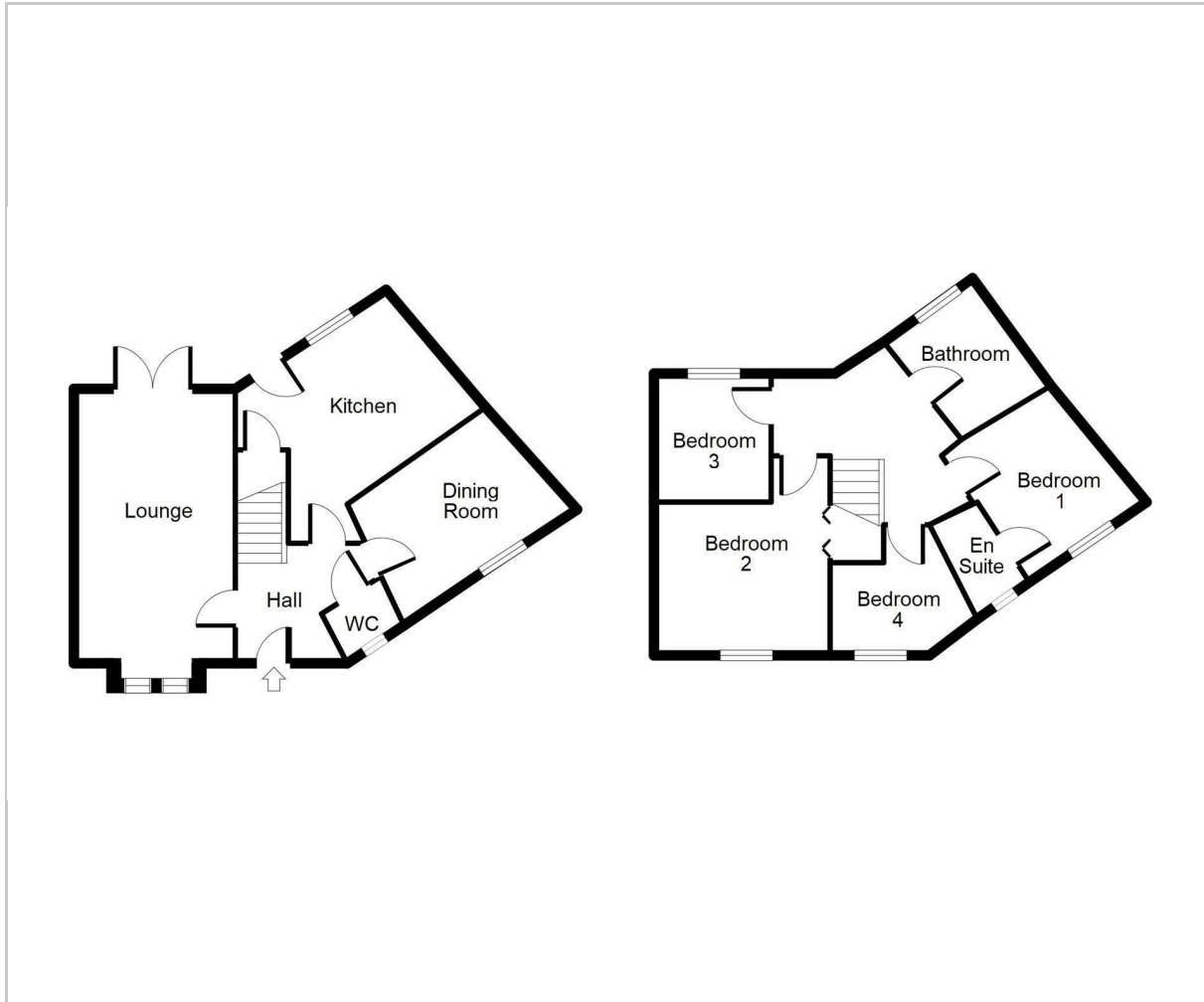
Bathroom

Outside

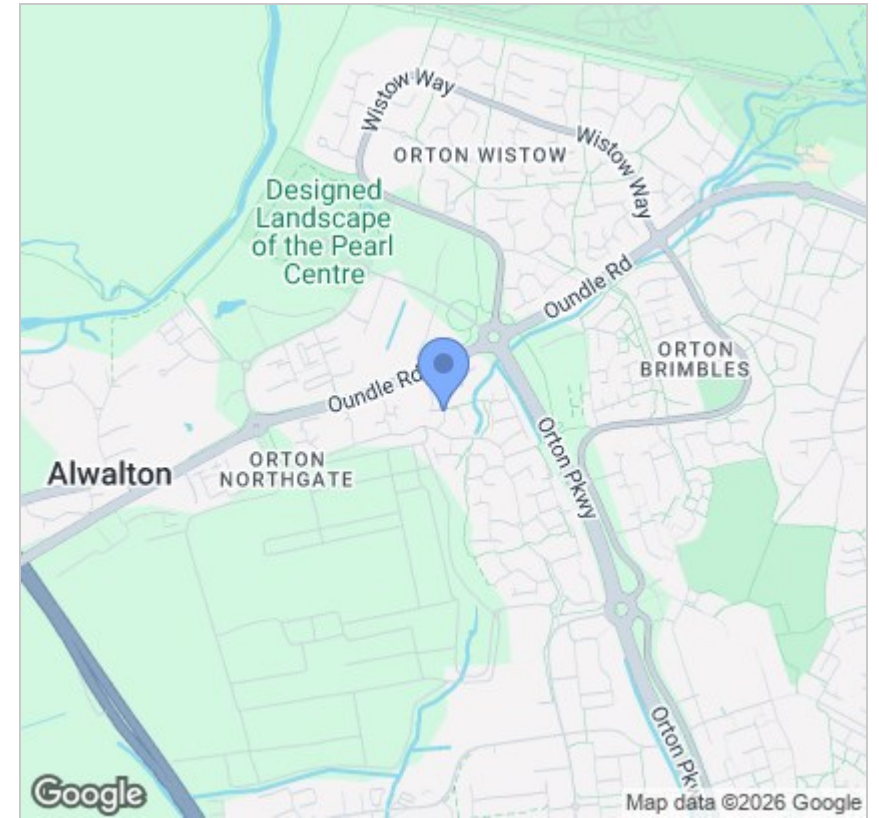
To the front of the property is an open plan garden, there are two allocated parking spaces along with an easy to maintain block paved garden which is fully enclosed.



Floor Plan



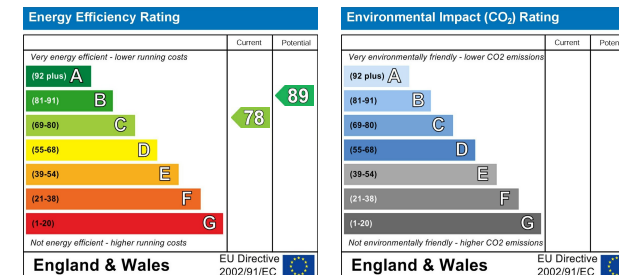
Area Map



Viewing

Please contact our Orton Office on 01733 852257 if you wish to arrange a viewing appointment for this property or require further information.

Energy Efficiency Graph



These particulars, whilst believed to be accurate are set out as a general outline only for guidance and do not constitute any part of an offer or contract. Intending purchasers should not rely on them as statements of representation of fact, but must satisfy themselves by inspection or otherwise as to their accuracy. No person in this firm's employment has the authority to make or give any representation or warranty in respect of the property.



48b Church Drive, Orton Waterville
 Peterborough, PE2 5HE
 T: 01733 852257
 E: orton@firminandco.co.uk