



## Green Walk, SE1

£1,400,000

A 2,000 sq ft Warehouse Conversion, with exposed brick, large sash windows & high ceilings, a spacious open plan kitchen & living room, three double bedrooms & two bathrooms, sold with a Share of Freehold, plus secure, off-street parking. Offers in excess of £1.4m

The Jam Factory is one of SE1's most desirable developments, ideally situated on Rothsay Street, just moments from Bermondsey Street with its vibrant mix of restaurants, cafés, and galleries. London Bridge, Borough Market, and the South Bank are all within easy reach, offering an exceptional lifestyle in the heart of London.

### Features

- 2,000 Sq Ft
- High Ceilings & Sash Windows
- 24 Hour Concierge
- Secure Underground Parking
- Valid EWS1 Form
- Chain Free Sale
- Offers in excess of £1.4m



## Green Walk, SE1

This apartment is a fantastic size with a very large living space, allowing ample room for dining, a separate seating area, a large full length kitchen and and is flooded with light due to its many sash windows.

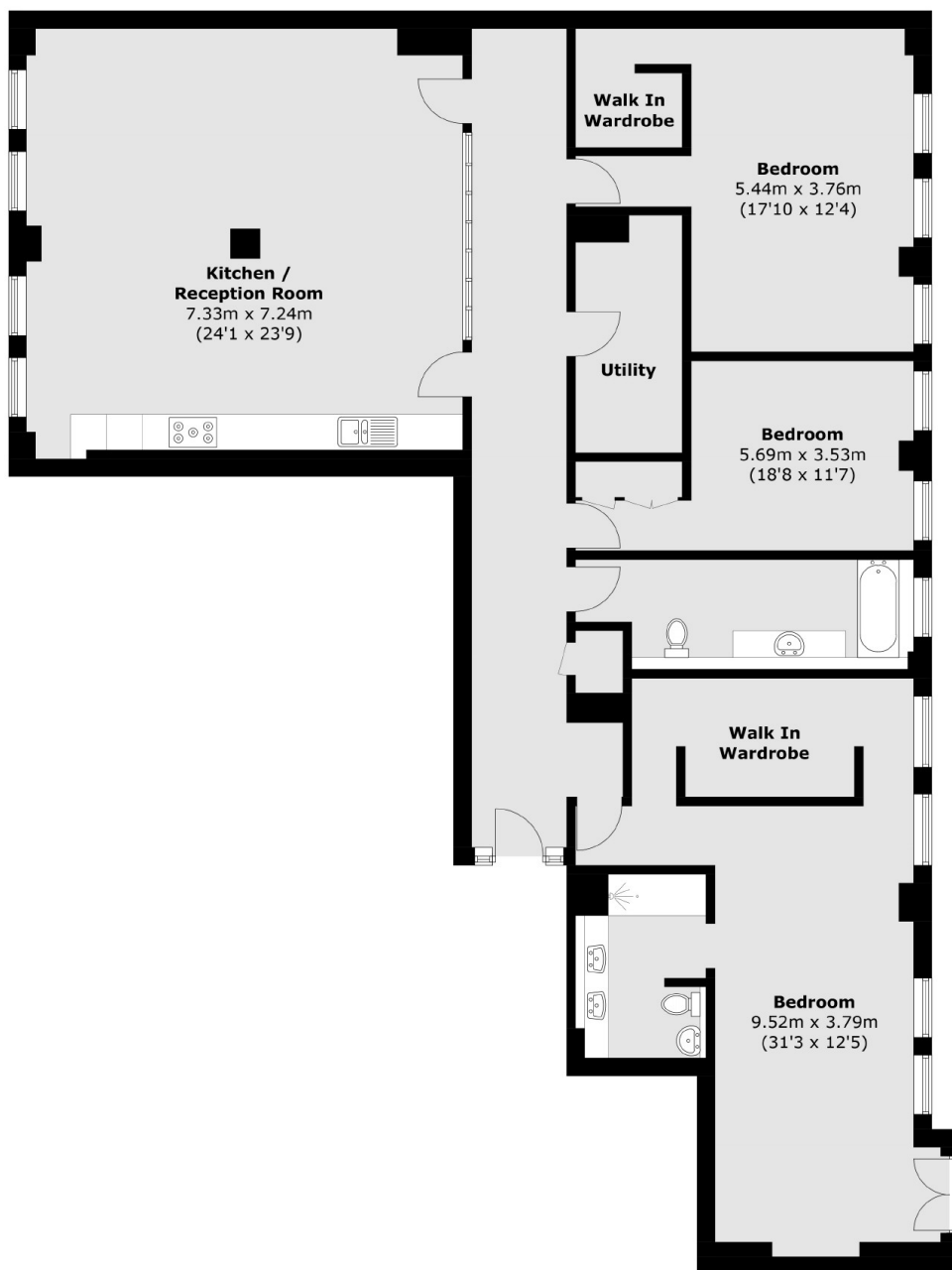
All three bedrooms are generous doubles, each with large built-in wardrobes. The master bedroom benefits from an en-suite shower room, whilst the second and third bedrooms are served by a three piece family bathroom.

The former Hartley's Jam factory is iconic, award-winning development, with an attractive blend of period charm and contemporary design, accentuating the best original features, yet benefiting from modern fittings throughout.

Benefitting from an on-site concierge, landscaped communal gardens, walkways and a children's' play area, there is a genuine community feel here.



# Green Walk, London, SE1



Total area (approx.): 189.2 sq. m (2,036.5 sq. ft)