

## Ketts Oak, Sitting on a generous 0.25 acre plot with huge potential, Hethersett

Offers In Region Of £349,950

2 1 2

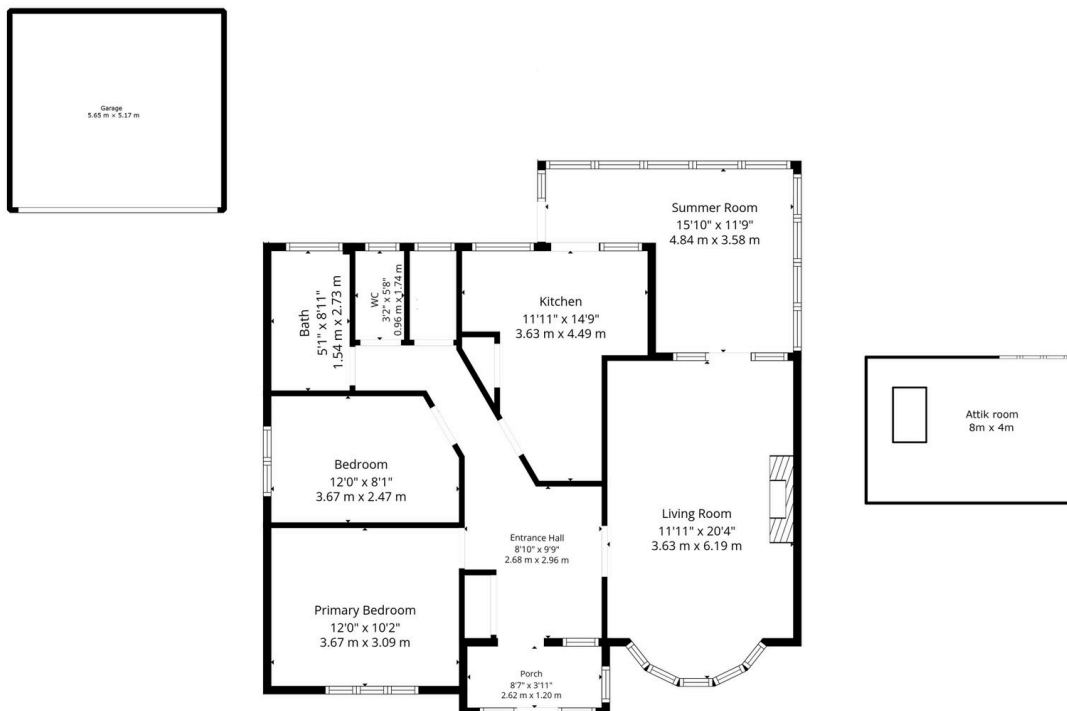


Moneyproperties are delighted to present this beautiful two/three-bedroom semi-detached bungalow, set on a generous 0.25-acre plot and offering potential for further development. The property has been partly renovated by the current owner, who has thoughtfully modernised and decorated the home to a high standard, with exposed flooring and a newly fitted bathroom. Scope for further enhancement, including completing additional bedroom within the roof space, extending the kitchen STPP, and creating additional parking to the front of the property.

**Tenure: Freehold   EPC: D   Council Tax: C**

## Key Features

- Beautifully renovated two/three-bedroom semi-detached bungalow, set on a generous 0.25-acre plot
  - Partly renovated by the current owner, who has thoughtfully modernised and decorated the home to a high standard
  - Excellent scope for further enhancement, including completing the already started additional bedroom within the roof space
  - Situated in a highly desirable location, the property is conveniently positioned close to Hethersett Park Farm Hotel
  - Nearby Hethersett Academy is widely regarded as one of the leading schools in Norfolk, holding an Outstanding Ofsted rating
- Offering exceptional potential for further development subject to appropriate planning permission
  - Renovations include exposed flooring throughout, decoration to a high standard and a stylish newly fitted bathroom
  - Further renovations include extending the kitchen into the rear garden, and creating additional parking to the front of the property
  - Excellent transport links to Norwich and Cambridge via the A11
- See our full online listing for further details including flood risk, broadband speed and other material information



**Total: 816 sq. Ft, 76 m2**  
 1st Floor: 816 sq. Ft, 76 m2  
 Excluded Areas: Porch: 34 sq. Ft, 3 M2, Patio: 191 sq. Ft, 18 M2, Summer Room: 137 sq. Ft, 13 M2,  
 Walls: 87 sq. Ft, 8 m2  
 Garden 6,800 sq ft  
 Measurements Deemed Highly Reliable, But Not Guaranteed