



34 Priory Close

Beeston Regis, Sheringham, NR26 8SL

£450,000-£475,000
(Guide Price)

Freehold

34 Priory Close

Beeston Regis
Sheringham
NR26 8SL

£450,000-£475,000
(Guide Price)

Freehold

- **Beautifully renovated four-bedroom detached bungalow in a cul-de-sac setting**
- **Impressive open-plan kitchen, dining and living space with excellent natural light**
- **Bi-fold doors opening onto landscaped garden, ideal for indoor–outdoor living**
- **Stylish contemporary kitchen with integrated appliances and breakfast bar**
- **Versatile fourth bedroom, ideal for guests, office or additional living space**
- **Modern family bathroom with clean, high-quality finishes**
- **Thoughtfully landscaped garden with decking and pergola-covered seating area**
- **Generous driveway providing ample off-road parking**
- **Sought-after coastal location close to beaches, countryside and nearby towns**

Agents Note

Council Tax: C

Mains water, drainage, electricity and gas

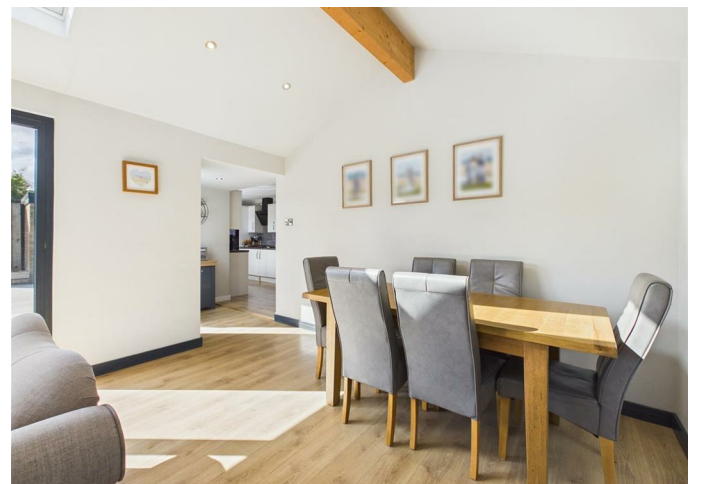
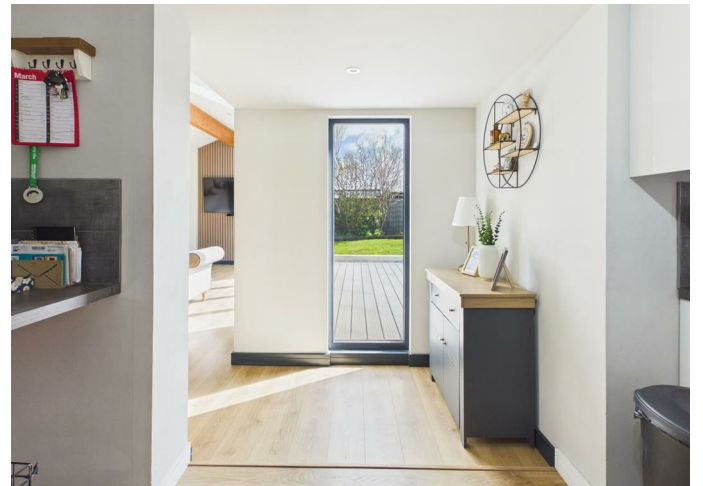
£450,000-£475,000 Guide Price

Tucked away within a quiet cul-de-sac in the sought-after coastal village of Beeston Regis, this beautifully renovated detached bungalow offers a refined blend of modern design and effortless single-storey living. At its heart lies a striking open-plan kitchen, dining and living space, thoughtfully arranged to maximise light and flow. Contemporary cabinetry, integrated appliances and a sociable breakfast bar define the kitchen, while the adjoining living area is elevated by vaulted skylights and elegant bi-fold doors, opening seamlessly onto the garden to create an exceptional indoor–outdoor connection.

The accommodation is both versatile and well-balanced, comprising four generously proportioned bedrooms, including a thoughtfully converted fourth room ideal for guests, home working or additional living space. A stylish family bathroom, finished with clean lines and modern fittings, complements the home's cohesive aesthetic, while the overall layout lends itself equally to relaxed family life or a peaceful coastal retreat.

Outside, the landscaped rear garden has been carefully curated to offer a series of inviting spaces, from expansive decking to raised seating areas and a pergola-covered terrace, perfectly suited to entertaining or quiet enjoyment. To the front, a generous driveway provides ample parking, completing a home that combines comfort, style and a coveted North Norfolk setting, just moments from the coastline and surrounding countryside.





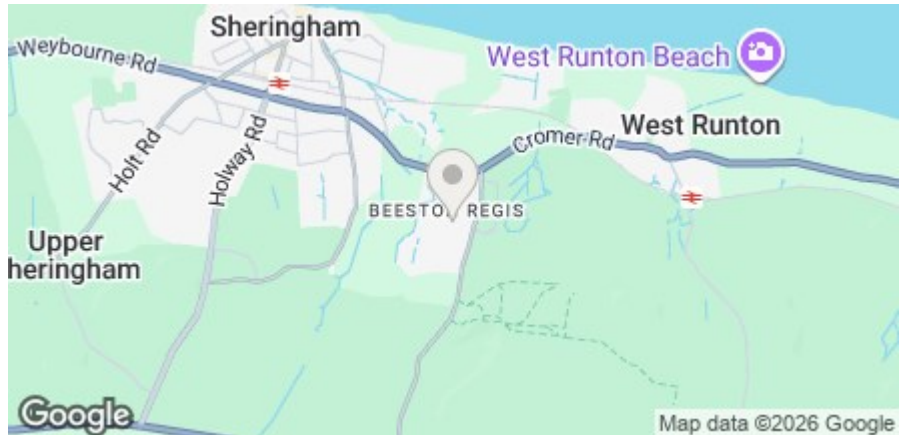








Energy Efficiency Rating		
	Current	Potential
<i>Very energy efficient - lower running costs</i>		
(92 plus) A		
(81-91) B		
(69-80) C		
(55-68) D		
(39-54) E		
(21-38) F		
(1-20) G		
<i>Not energy efficient - higher running costs</i>		
England & Wales	EU Directive 2002/91/EC	



15 West Street, Cromer, Norfolk, NR27 9HZ
01263 511111 • hello@henleyshomes.co.uk • henleyshomes.co.uk

These particulars and measurements whilst believed to be accurate, are set out as a general outline only for guidance and do not constitute any part of an offer or contract. Intending purchasers should not rely on them as statements of representation of fact, but must satisfy themselves by inspection or otherwise as to their accuracy. No person in this firm's employment has the authority to make or give representation or warranty in respect of the property.

