



1 Redwood Close, Dibden Purlieu, SO45 5SN
£419,950



ANTHONY JAMES
PROPERTIES



1 Redwood Close

Dibden Purlieu, Southampton

Four-bedroom, two-bathroom end-of-terrace house. The property features two generous reception rooms. Open plan kitchen and dining area with modern units, integrated appliances - wooden countertops, and a stylish tile backsplash. Upstairs, the bedrooms impress with a vaulted ceiling to the main bedroom, built-in wardrobes. The principal bedroom benefits from an ensuite bathroom.

The property further excels with its extensive outdoor spaces and practical features. The walled rear garden offers a patio seating area, mature greenery. Ample off-road parking is available, including a private driveway for two cars, and the property's end-of-terrace position ensures a generous frontage. For added functionality, a versatile workshop space with direct outdoor access. The utility area with washer and dryer adds further practicality and can double up as an office. With its blend of modern comfort, flexible spaces, and pleasant garden, this property is perfectly suited for those seeking a premium lifestyle in a well-appointed family residence.

Council Tax band: D

Tenure: Freehold



1 Southward House
Dibden Purlieu SO45 4PT



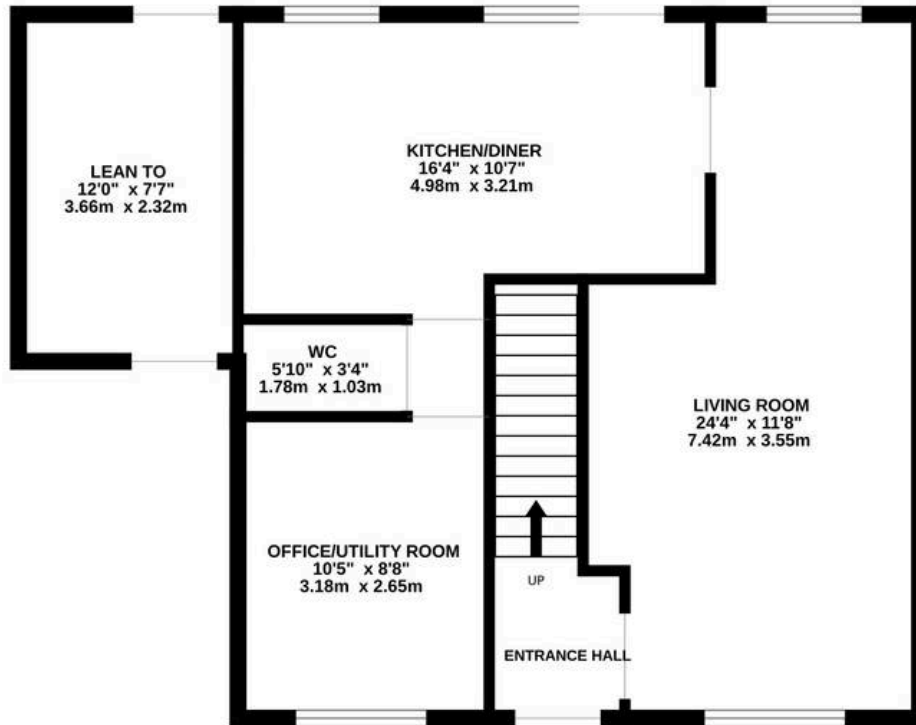
T: 02380 844405

info@anthonyjamesproperties.co.uk

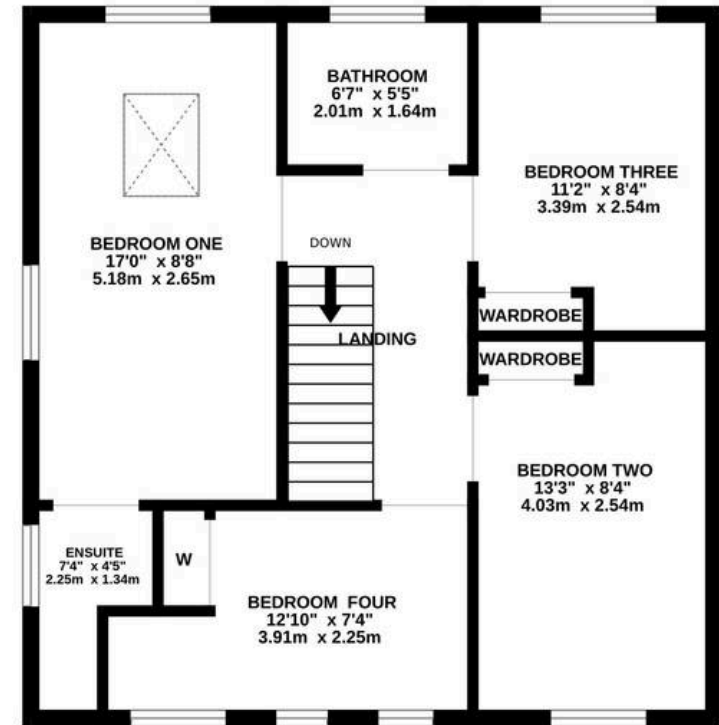




GROUND FLOOR
666 sq.ft. (61.8 sq.m.) approx.



1ST FLOOR
575 sq.ft. (53.5 sq.m.) approx.



TOTAL FLOOR AREA : 1241 sq.ft. (115.3 sq.m.) approx.

Whilst every attempt has been made to ensure the accuracy of the floorplan contained here, measurements of doors, windows, rooms and any other items are approximate and no responsibility is taken for any error, omission or mis-statement. This plan is for illustrative purposes only and should be used as such by any prospective purchaser. The services, systems and appliances shown have not been tested and no guarantee as to their operability or efficiency can be given.

Made with Metropix ©2026