



## Broad Road Acocks Green, Birmingham

- A Three Bedroom Semi-Detached Family Home
- Requiring Complete Modernisation Throughout
- Westerly Facing Rear Garden
- No Upward Chain

**£230,000**

Current EPC Rating - C  
Current Council Tax Band - C



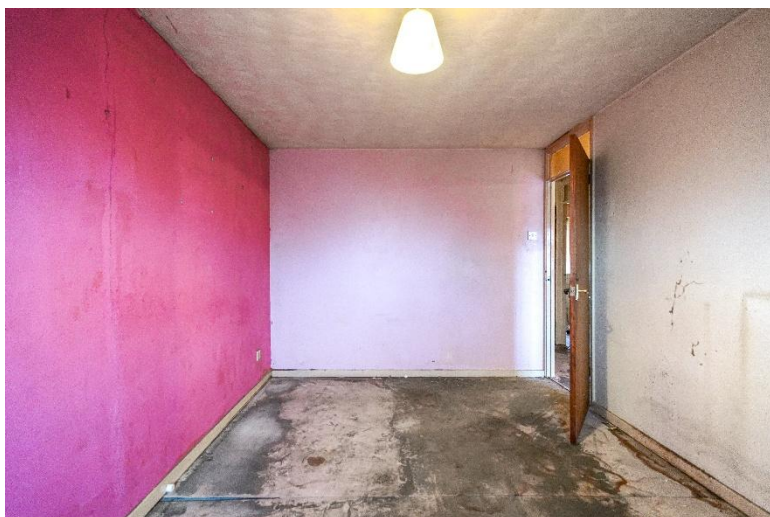




## Property Description

A three bedroom semi detached property in need of refurbishment and offering superb potential, benefiting from no upward chain and currently offering lounge, kitchen diner, bathroom, rear garden, garage and off-road parking





## Rooms & Measurements

Lounge to Front 5.11m x 2.92m (16'9" x 9'7")

Kitchen Diner to Rear 5.31m x 2.74m (17'5" x 9'0")

Bedroom One to Front 4.42m x 2.62m (14'6" x 8'7")

Bedroom Two to Rear 3.35m x 2.64m (11'0" x 8'8")

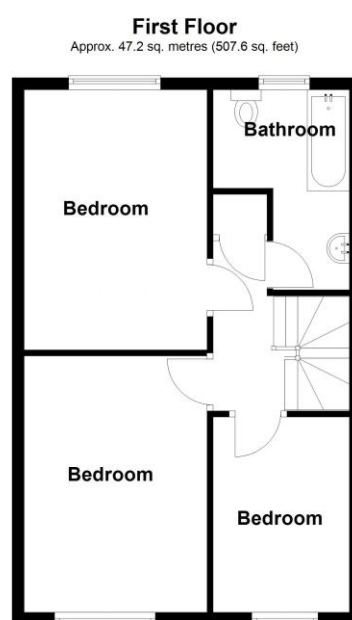
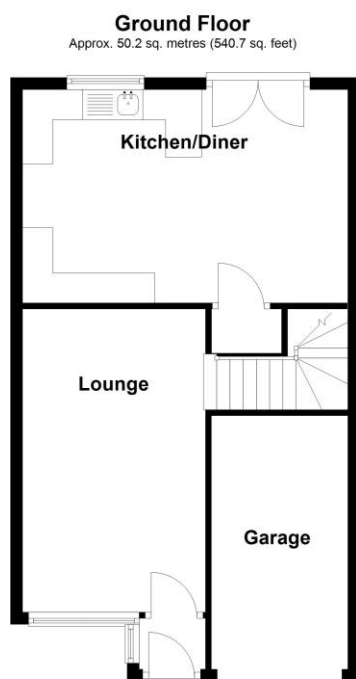
Bedroom Three to Front 3.05m x 2.44m (10'0" x 8'0")

### Tenure

We are advised by the vendor that the property is freehold. We would advise all interested parties to obtain verification through their own solicitor or legal representative.

EPC supplied by Nigel Hodges. Current council tax band – C





Total area: approx. 97.4 sq. metres (1048.3 sq. feet)

316 Stratford Road  
Shirley  
Solihull  
B90 3DN

[www.smart-homes.co.uk](http://www.smart-homes.co.uk)  
0121 744 4144

Agents Note: Whilst every care has been taken to prepare these particulars, they are for guidance purposes only. We believe all information to be correct from the day of marketing however, we advise and recommend that your conveyancer and or surveyor verifies all information supplied. All measurements are approximate are for general guidance purposes only and whilst every care has been taken to ensure their accuracy, they should not be relied upon and potential buyers are advised to recheck the measurements.