

**BuckleyBrown**  
ESTATE AGENTS

BuckleyBrown  
ESTATE AGENTS  
**FOR SALE**  
01623 633633 [buckleybrown.co.uk](http://buckleybrown.co.uk)

£100,000

Mount Street, Mansfield,



Welcome to **BuckleyBrown**, where every home is carefully presented, so you can explore with clarity and confidence.

**BuckleyBrown**  
ESTATE AGENTS

"As many buyers will appreciate, homes in this price range rarely become available. Set to attract strong interest, this impressive opportunity combines location and the chance to make this one truly your own."

- Courtney, Valuer



## A Great Opportunity Not To Be Missed

Offering spacious accommodation and excellent potential, this charming two-bedroom terraced home is ideal for first-time buyers, investors or those looking to take their next step on the property ladder. With two reception rooms, two double bedrooms and useful outbuildings, this property provides a fantastic opportunity to create a wonderful home.



## The Finer Details

***Step inside this well-proportioned two-bedroom terraced property and discover a home that offers both space and practicality throughout.***

The ground floor comprises a welcoming living room, providing a comfortable space to relax and unwind, while the separate dining room offers the perfect setting for family meals and entertaining guests. To the rear of the property, the kitchen provides ample storage and workspace, catering to the needs of everyday living.

To the first floor, there are two generously sized double bedrooms, both offering comfortable accommodation and plenty of natural light. Completing the accommodation is a well-appointed family bathroom.

Outside, the property benefits from an enclosed rear garden, creating a private outdoor space to enjoy throughout the year. The garden also features two useful store buildings, providing excellent storage options, workshop space or potential for a variety of uses.

Combining spacious accommodation, practical outdoor space and excellent potential, this delightful property presents a fantastic opportunity for a wide range of buyers.





**BuckleyBrown**  
ESTATE AGENTS







## Life in Mansfield

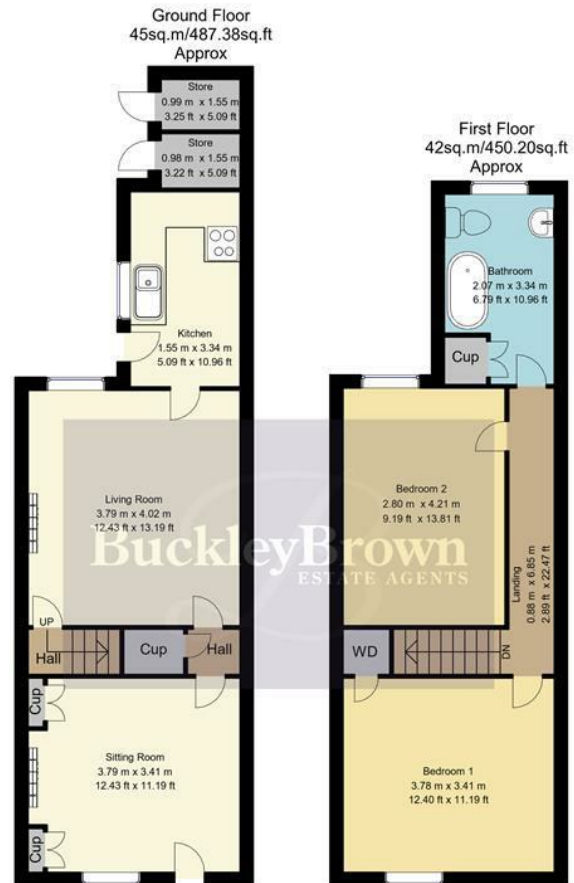
*This property enjoys a convenient and well-established residential setting. The area is particularly popular with families, first-time buyers and professionals thanks to its excellent access to local amenities and transport links.*

A range of shops, supermarkets, schools and healthcare facilities can be found nearby, making day-to-day living both practical and convenient. Mansfield town centre is just a short distance away, offering an extensive selection of retail, dining and leisure opportunities.

For those who enjoy the outdoors, the area benefits from nearby parks, green spaces and countryside walks, providing plenty of opportunities to enjoy the fresh air and explore the surrounding landscape. Excellent road links also connect residents to Mansfield, Chesterfield, Nottingham and beyond, making the location ideal for commuters.

Combining convenience, affordability and a strong sense of community, Forest Town continues to be a popular place to call home for buyers of all ages.





Whilst every attempt has been made to ensure the accuracy of the floor plan contained here, no responsibility is taken for incorrect measurements of doors, windows, appliances and room or any error, omission or misstatement. Exterior and interior walls are drawn to scale based on interior measurements. Any figure given is for initial guidance only and should not be relied on as basis of valuation. These plans are for marketing purposes only and should be used as such by any prospective purchase. Specially no guarantee is should not be relied on as a basis of valuation. These plans are for marketing purposes only and should be used as such by any prospective purchase. Specifically no guarantee is given on the total square footage of the property if quoted on this plan.

CC Ltd ©2018

## Key Features

No Upward Chain

---

Two generous double bedrooms

---

Spacious living room & Separate dining room

---

Well-appointed kitchen

---

First Floor family bathroom

---

Enclosed rear garden

---

Two useful store buildings

---

Well-proportioned accommodation throughout

---

Popular and convenient location

---

Scope to personalise and make your own

---

EPC Rating - D | Council Tax Band - A | Approx. Sq Ft - 937.58

**BuckleyBrown**  
ESTATE AGENTS



These particulars are intended as a guide only and do not form part of any offer or contract. All descriptions, measurements, images and plans are provided for illustration purposes and should not be relied upon as statements of fact. Prospective purchasers should satisfy themselves as to the accuracy of the information. Buckley Brown Estate Agents accept no liability for any loss arising from reliance on these details.

© Buckley Brown Estate Agents 2026. All rights reserved.

Exceptional homes deserve  
exceptional representation.

Let's Chat.

01623 633633

[mansfield@buckleybrown.co.uk](mailto:mansfield@buckleybrown.co.uk)

[buckleybrown.co.uk](https://www.buckleybrown.co.uk)

**BuckleyBrown**  
ESTATE AGENTS