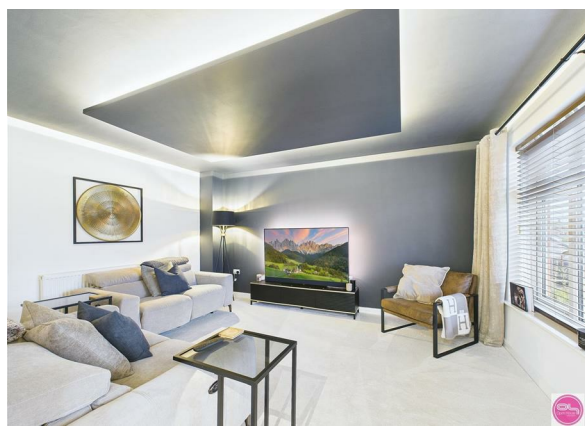


**Marley Way, Drakelow, Burton-On-Trent, DE15 9WQ**

**£425,000**

**Council Tax Band: E**

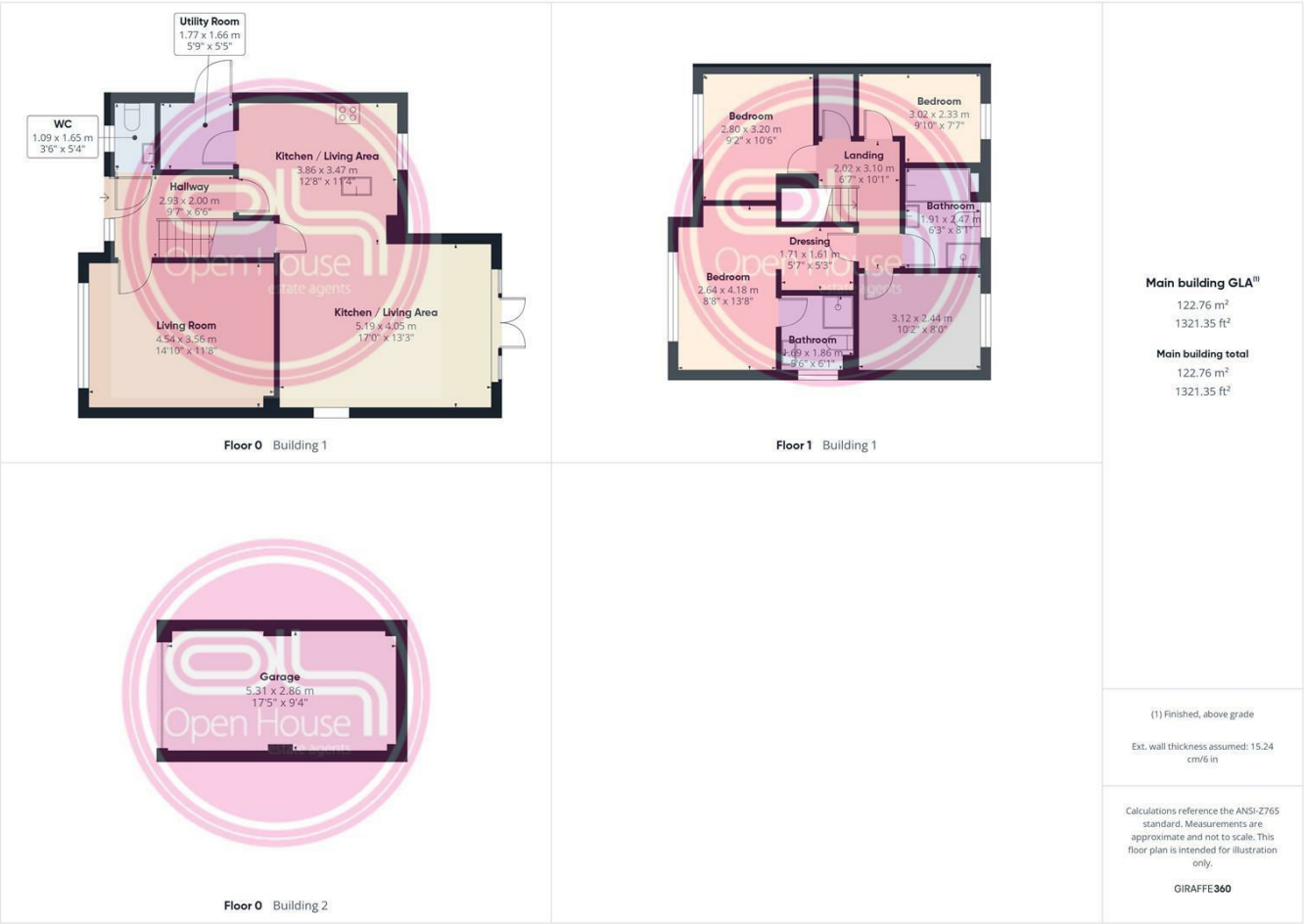


Located on the ever-popular new development in Drakelow, this modern four-bedroom detached home offers stylish, spacious accommodation across two floors. Despite being a new property, the current owners have invested in further luxuries and modern conveniences to truly give this home the 'Wow Factor'.

Designed with family living in mind, the property features a show stopping open-plan kitchen and family room, a generous lounge with an exceptional modern finish, landscaped gardens, four well-proportioned bedrooms, and two beautifully appointed bathrooms. The surrounding area benefits from easy access to Burton-on-Trent, Swadlincote, the A38, A444 and has National Forest walking routes on the doorstep.



Open House Burton & Swadlincote



Energy Efficiency Rating		
	Current	Potential
Very energy efficient - lower running costs		
(92 plus) <b>A</b>		93
(81-91) <b>B</b>	84	
(69-80) <b>C</b>		
(55-68) <b>D</b>		
(39-54) <b>E</b>		
(21-38) <b>F</b>		
(1-20) <b>G</b>		
Not energy efficient - higher running costs		
England & Wales	EU Directive 2002/91/EC	