



Congrave Way, Dordon, Tamworth

burchell
edwards



Property Description

Congrave Way is a modern cul de sac with just a handful of homes. This quiet setting is well connected with shops and schools close by along with excellent access to the wider area due to the A5.

Inside, there is a welcoming entrance hallway with stairs off to the first floor. The ground floor offers a modern kitchen, a bright lounge and a useful guest W.C. Upstairs features two double bedrooms and a family bathroom.

This charming home is well decorated throughout-call us today for more information and to see inside!

Hall

Stairs to first floor and doors to:

Kitchen

A range of wall and base units with work surfaces over, sink and drainer unit, integrated oven and hob, cooker hood and space for fridge / freezer.

Lounge

Central heating radiator and french doors to the garden.



Bedroom One

Double glazed window to the rear and central heating radiator.

Bedroom Two

Two double glazed windows to the front, central heating radiator and fitted wardrobes.

Bathroom

Central heating radiator, paneled bath, low level W.C and wash hand basin.

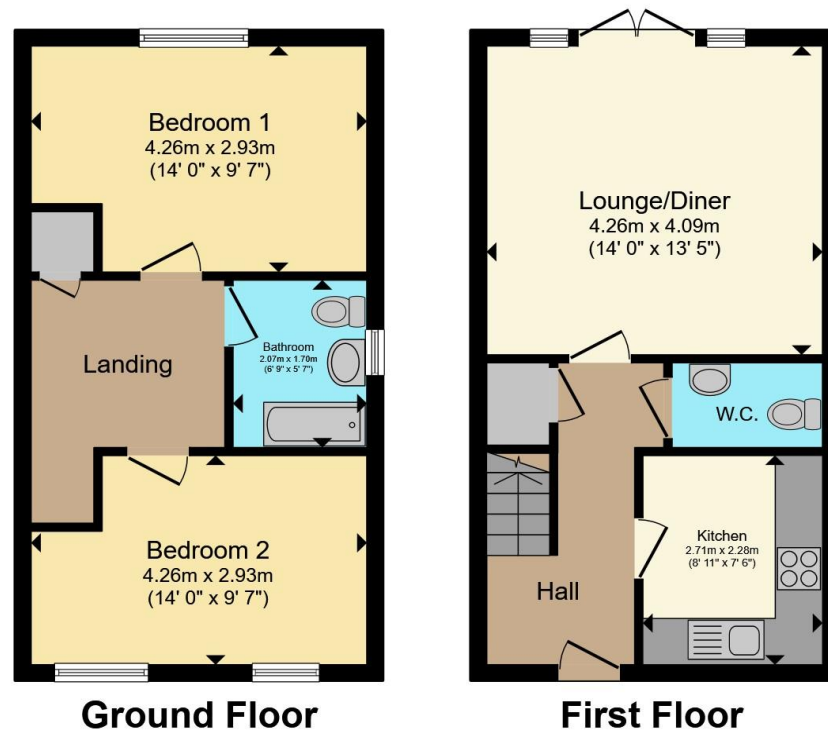
Rear Garden

Patio, lawn and fenced boundaries.









Total floor area 68.2 m² (735 sq.ft.) approx

This floor plan is for illustrative purposes only. It is not drawn to scale. Any measurements, floor areas (including any total floor area), openings and orientation are approximate. No details are guaranteed, they cannot be relied upon for any purpose and they do not form part of any agreement. No liability is taken for any error, omission or misstatement. A party must rely upon its own inspection(s). Powered by www.propertybox.io



To view this property please contact Burchell Edwards on

T 01827 66400
E tamworth@burchelledwards.co.uk

1 Bolebridge Street
 TAMWORTH B79 7PA

EPC Rating: B Council Tax
 Band: B

Tenure: Freehold

view this property online burchelledwards.co.uk/Property/TAM207596



1. MONEY LAUNDERING REGULATIONS Intending purchasers will be asked to produce identification documentation at a later stage and we would ask for your co-operation in order that there will be no delay in agreeing the sale. 2. These particulars do not constitute part or all of an offer or contract. 3. The measurements indicated are supplied for guidance only and as such must be considered incorrect. Potential buyers are advised to recheck measurements before committing to any expense. 4. We have not tested any apparatus, equipment, fixtures, fittings or services and it is in the buyers interest to check the working condition of any appliances.

Burchell Edwards is a trading name of Connells Residential which is registered in England and Wales under company number 1489613, Registered Office is Cumbria House, 16-20 Hockliffe Street, Leighton Buzzard, Bedfordshire, LU7 1GN. VAT Registration Number is 500 2481 05.

See all our properties at www.burchelledwards.co.uk | www.rightmove.co.uk | www.zoopla.co.uk

Property Ref: TAM207596 - 0003