

King Henrys Road, NW3

£2,000,000

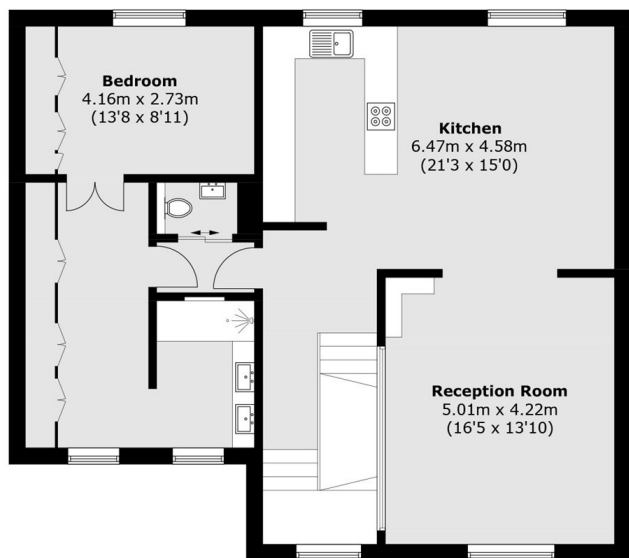
This stunning top floor apartment takes up the top two floors of an impressive detached Victorian conversion. Having been fully renovated to a very high standard it is an ideal home for anyone searching for a bright, modern apartment.

Positioned moments away from Swiss Cottage station and from Regent's Park Road, this property enjoys easy access to a delightful array of boutique shops, acclaimed restaurants, and vibrant cafés.

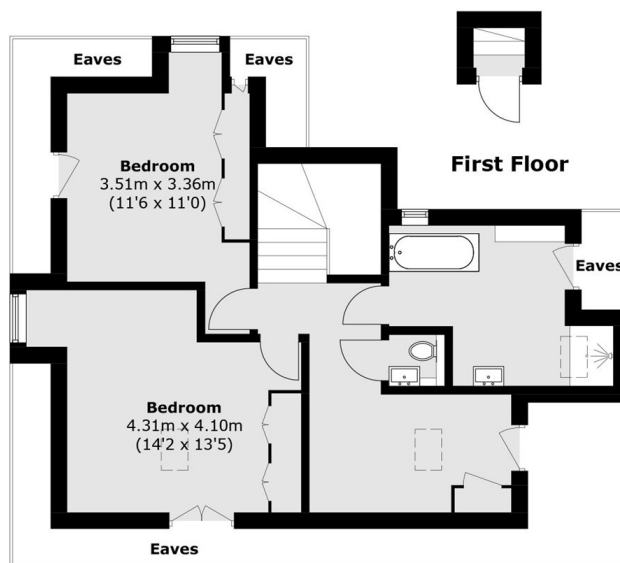
Features

- Three Bedrooms
- Top Floor Maisonette
- Split Level
- Open Plan Kitchen/Living Room
- Share of Freehold
- Chain-Free

King Henrys Road, London, NW3



Second Floor



Third Floor

Total area (approx.): 156.9 sq. m (1,688.9 sq. ft)
(Excluding Eaves)