



Price

£565,000

Freehold

4x  3x  1x 

Woodfield, Woodfield Drive, Lordswood,
Chatham, Kent, ME5

Wards
Helping you move forwards



Main features

- Contemporary fitted kitchen with integrated appliances
- Bi-folding doors from the kitchen/diner leading to rear garden
- Economical air source heat pump for hot water and heating
- Balcony leading from bedroom 1
- Surrounded by a protected woodland environment
- 10-year new build warranty

Accommodation

GROUND FLOOR

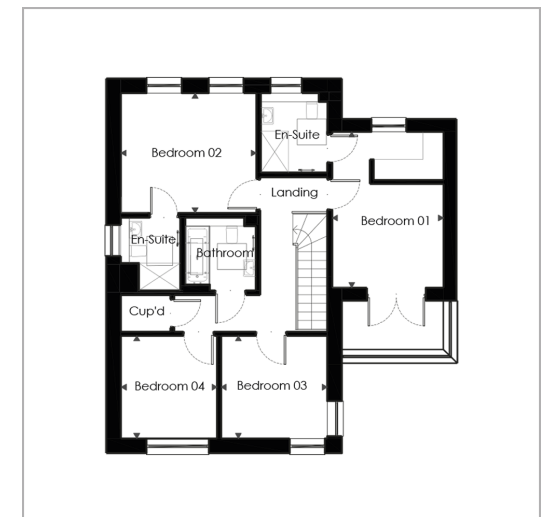
Hall
 Downstairs Cloakroom
 Living Room: 14'5 x 12'6 (4.40m x 3.81m)
 Kitchen/Dining: 19'6 x 15'7 (5.95m x 4.75m)

FIRST FLOOR

Landing
 Bedroom 1 : 14'2 x 10'6 (4.32m x 3.20m)
 En-Suite Shower Room
 Bedroom 2 : 12'9 x 11'4 (3.89m x 3.46m)
 En-Suite Shower Room
 Bedroom 3: 10'1 x 9'8 (3.08m x 2.95m)
 Bedroom 4 : 9'8 x 9'7 (2.95m x 2.92m)
 Bathroom

OUTSIDE

Front Garden
 Rear Garden
 Garage
 Driveway



Call Rainham - 01634 373531 ■ wardsof Kent.co.uk

- If buying to let, the energy rating will need to be improved to at least 'E' rating before you can let the property
- Appliances & services are untested, dimensions are approximate and floor plans are not to scale

■ Legal advice should be taken to verify fixtures/fittings, planning, alterations and/or lease details



12144535/20250529/CW/DW