



2 PALMER STREET , YORK , YORKSHIRE , YO1 7NF

**Unfurnished, £1,800 pcm, Available Now**



## £1,800 pcm Unfurnished



4



2



2

• 4 Bedroom • 2 Bathrooms • Parking Space • City Centre • Council Tax Band G

• EPC Rating = C (80) • Council Tax = G

### Description

This 4 bedroom townhouse is split over 4 floors with 2 bathrooms, living room, office, kitchen/diner with integrated appliances and utility room with washer and a dryer.

### Outside

Patio/seating area. The property includes one allocated parking space in the secure underground parking.

### Tenancy

RENT: £1,800pcm, payable monthly in advance by bank standing order.

DEPOSIT: £2,076 (five weeks) will be held by Savills as Stakeholder in a non-interest bearing account and registered with the Tenancy Deposit Scheme. It will be returnable on termination, subject to compliance with the terms and conditions of the agreement.

MAINTENANCE: The house and surrounding area must be kept in a clean and tidy state at all times. The Tenant will be responsible for the interior of the property, fixtures and fittings. The Landlord will be responsible for the structure and exterior.

Pets considered, to be approved by the Landlord in writing beforehand.

No smoking.

OUTGOINGS: The tenant will be liable for Council Tax, water charges and all other outgoings demanded on the property during the term, including contents insurance which they should arrange.

### Services

Mains Gas, Electric and Water.

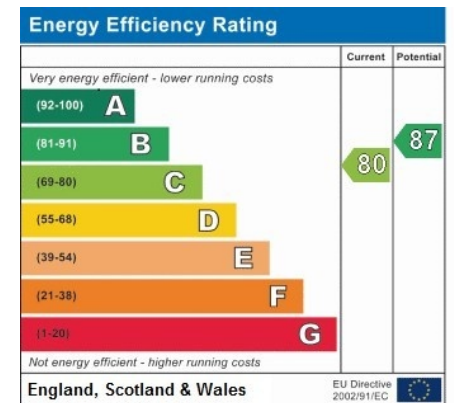
### Viewing

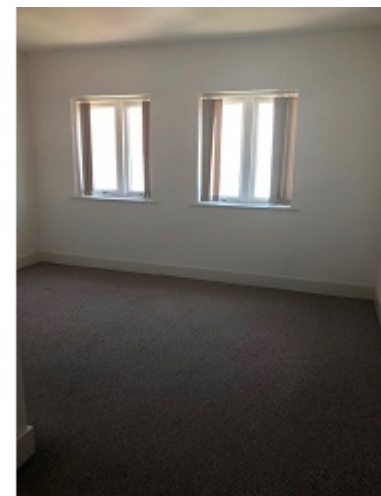
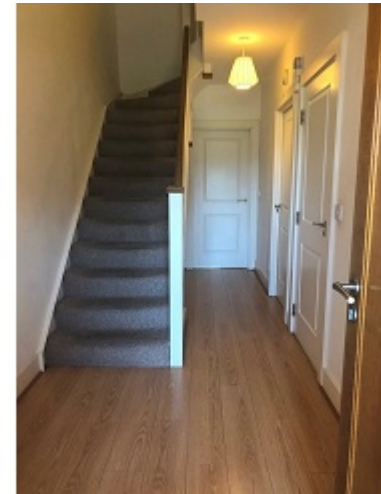
Strictly by appointment only with Savills York Office



2 PALMER STREET , YORK , YORKSHIRE , YO1 7NF

Local Information  
Hungate, York





## Savills York

Stuart House St John Street  
Peterborough Cambridgeshire  
PE 1 5DD

Angela Edwards  
aedwards@savills.com

+44 (0) 1904 617 837

[savills.co.uk](http://savills.co.uk)

Important notice: Savills, their clients and any joint agents give notice that: 1: They are not authorised to make or give any representations or warranties in relation to the property either here or elsewhere, either on their own behalf or on behalf of their client or otherwise. They assume no responsibility for any statement that may be made in these particulars. These particulars do not form part of any offer or contract and must not be relied upon as statements or representations of fact. 2: Any areas, measurements or distances are approximate. The test, photographs and plans are for guidance only and are not necessarily comprehensive. It should not be assumed that the property has all its necessary planning, building regulation or other consent and Savills have not tested any services, equipments or facilities. Tenants must satisfy themselves by inspection or otherwise.