



RESIDENTIAL



Somerset House George Street

Halifax, HX1 1HA

£650 Per Month





Ample sized one bedroom in Halifax town centre close to the train and bus station which would benefit anyone commuting out of Halifax on regular basis. The apartment benefits from gas central heating throughout, beige carpet in the bedroom, dark wood flooring in the kitchen, lounge, hallways and bathroom.

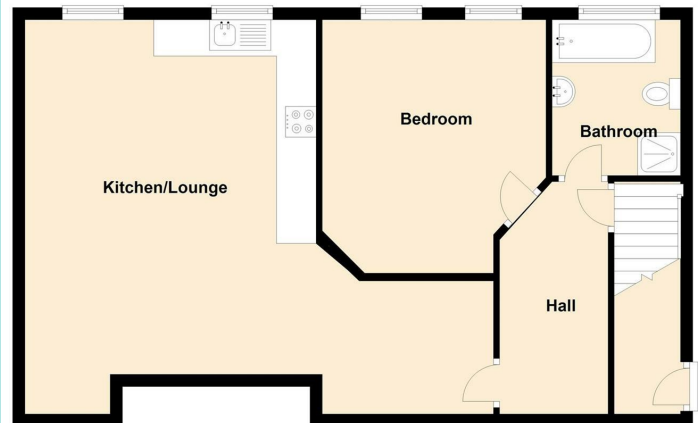
Accommodation

Upon entering the apartment is a small entrance hall with steps up to the main accommodation. A large open plan kitchen/living area has neutral décor and laminate flooring, and benefits from fitted kitchen including integrated electric oven and hob, with plenty of units in stylish grey gloss. the double bedroom has two large windows allowing in natural light and the main bathroom has a four piece suite to include WC, basin, bath, and separate shower cubicle.

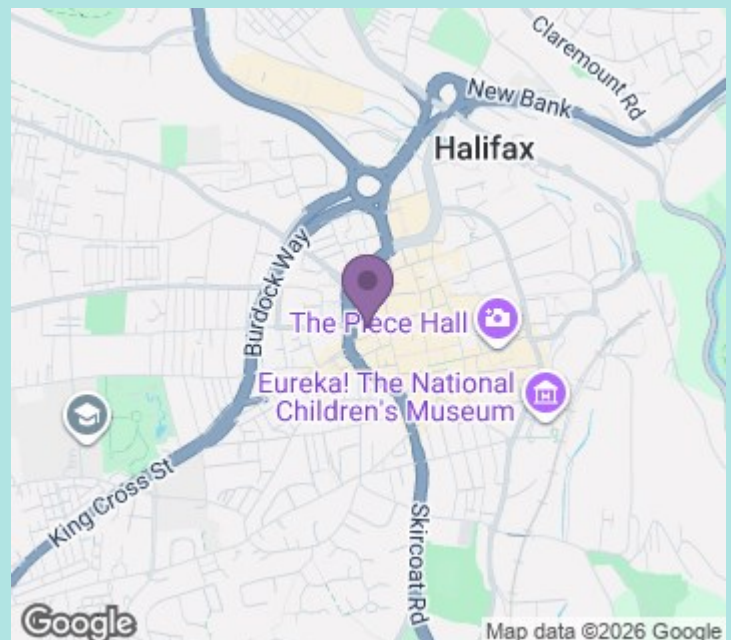
Location

Situated at the top of Halifax town centre, Somerset House offers a perfect setting for anyone with requirements to access the amenities of the immediate town centre, or further afield making use of the bus and railway stations.

Apartment 6



Council tax band: A
EPC rating: C
Deposit: £750



ws-residential.co.uk

01484 711200



These particulars, whilst believed to be accurate are set out as a general outline only for guidance and do not constitute any part of an offer or contract. Intending purchasers should not rely on them as statements of representation of fact, but must satisfy themselves by inspection or otherwise as to their accuracy. No person in this firm's employment has the authority to make or give any representation or warranty in respect of the property.