



SIMPLE LIFE



SIMPLE LIFE



Garvin Jones Grove, Hindley Green, WN2

£1,215 PCM

Belmont Place is equidistant between Manchester and Liverpool, providing good access to regional road and rail networks with the nearest station Daisy Hill providing regular direct services to Manchester City Centre.

The Ellesmere is a stunning home built with your needs in mind. Downstairs, there is a generous living room, hallway and WC. The rear of the property has a magnificent living/kitchen area with a range of contemporary fitted units with integrated appliances. The room has French windows opening onto and overlooking the rear garden as well as a series of skylights which flood the room with light – an ideal space for both family time and entertaining.

Upstairs there is a spacious family bathroom complete with a bath and shower, a master bedroom with fitted, mirrored wardrobes and two further well-proportioned bedrooms. At the top of the stairs you will also find a handy store cupboard.

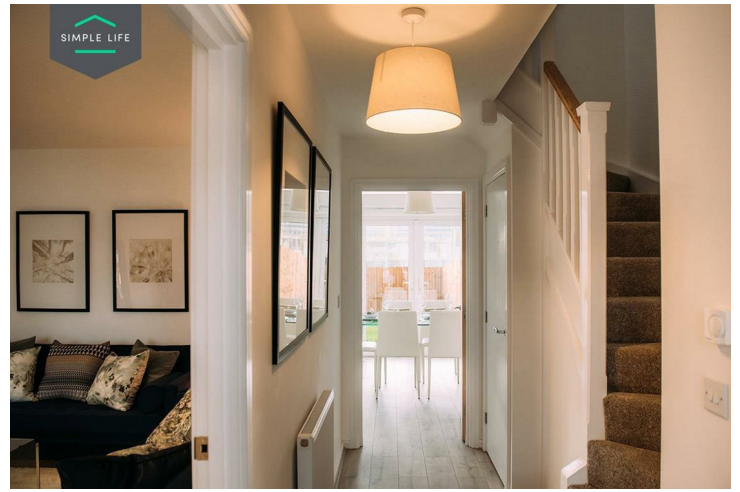
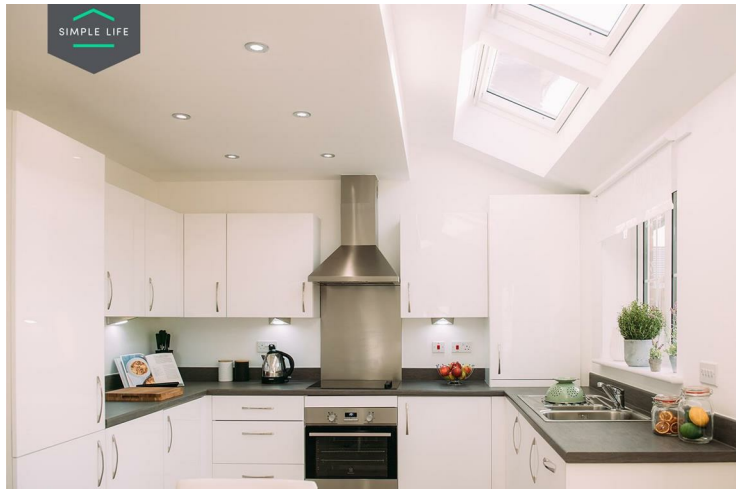
The site lies 2 miles from Leigh and its excellent retail and leisure provision including an Asda, Sainsburys and Cineworld.

With 52 primary and secondary schools rated 'Good' or 'Outstanding' by Ofsted within 3 miles, Belmont Place is ideally located for families, and benefits from additional retail complexes in Wigan.

To access the site, postcode WN2 4XS brings you to Bickershaw Lane / Smiths Lane with the development sitting to the right of a green play park.

Deposit: £1400
Holding deposit: £280
Unfurnished
Council Tax: B
Available 23rd February 2026





Key Features

- Private driveway
- Fitted wardrobes to master bedroom
- Fridge freezer
- Oven and hob
- Dark ash style worktops
- Security alarm system
- Dishwasher
- Washing/drying machine
- Light wash wood effect flooring
- Modern, white kitchen units

Location

