



Effie Road, SW6

£650,000

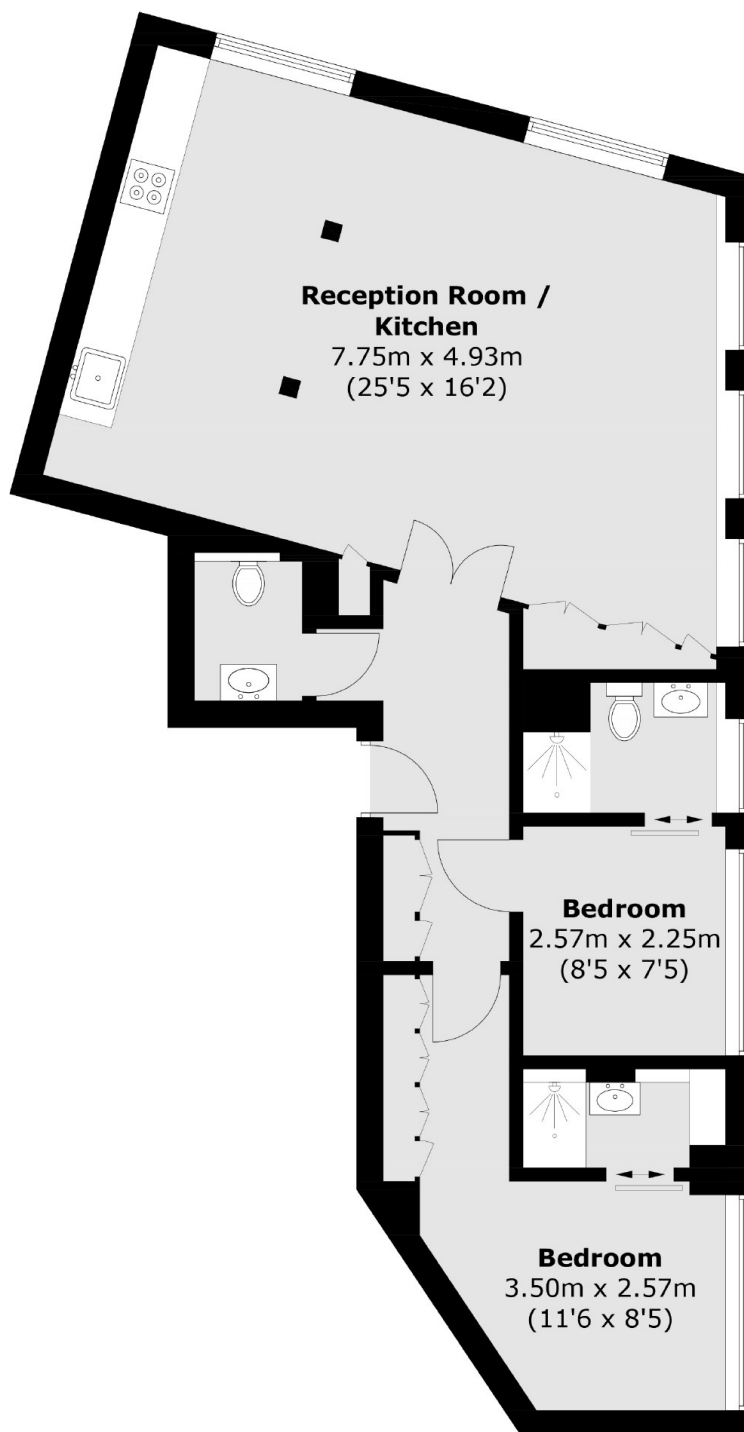
A newly renovated and well-finished two-bedroom lateral apartment, ideally positioned in the heart of Fulham Broadway. The property is set within a stylish development and features a spacious open-plan kitchen and living area. Both bedrooms benefit from en-suite bathrooms, with an additional guest WC, all finished to a high modern standard.

Located within close proximity to the amenities and transport links of both Fulham Broadway and Parsons Green, backing onto the popular Eel Brook Common.

Features

- Open Plan Kitchen Living
- Two Bedrooms
- Two Bathrooms + W.C.
- Bike Storage
- Sold Chain Free
- Well Finished Throughout

Effie Road, London, SW6



Total area (approx.): 71.8 sq. m (772.8 sq. ft)