



**Connells**

Honey Cottage  
Buckhorn Weston Gillingham



# Honey Cottage Buckhorn Weston Gillingham SP8 5HT

for sale offers in excess of  
**£695,000**



Connells are thrilled to present this truly sensational four-bedroom detached home to the market in the idyllic countryside village of Buckhorn Weston, Dorset. This bespoke blend of traditional character and modern style epitomises the definition of countryside living entirely, an early viewing is highly recommended to avoid missing out. The original section of the home oozes with charm and boasts log burners, stunning mantelpieces, hardwood flooring and generous yet cosy accommodation throughout its various bedrooms and reception rooms. This home has also undergone extensive improvement work including, but not limited to, an electrical rewire and a vast ground floor extension resulting in an impressively bright kitchen/dining space and a playroom for the children to enjoy. The kitchen's been fitted with a mixture of solid wood and granite worktops, elevating the appeal to another level, and still maintaining the original personality hosted within the home. If the interior of this home isn't enticing enough, the outside space available at Honey Cottage is just as remarkable boasting 2 separate driveways and an EV charging point. There's a large patio dining space served by the bifold doors in the kitchen where you can enjoy meals with a striking view of the countryside. Within the ample lawn space, you will also find a swim-spa/hot tub combination with a decked surround, perfect for those days in the hot summer sun. **CALL CONNELLS AND BOOK YOUR VIEWING TODAY!**

## Entrance Hall

The entrance hall has a smoke alarm and a radiator.

## Cloakroom

The cloakroom has a WC, hand wash basin and underfloor heating.

## Lounge

11' 1" x 14' ( 3.38m x 4.27m )

The lounge has a double glazed sash window to the front of the property. It has a log burner, Internet point, smoke alarm and two radiators.

## Kitchen / Dining Room

15' 6" x 20' ( 4.72m x 6.10m )

The kitchen / dining room has a double glazed sash window to the rear of the property, a double glazed sash window to the front of the property, bifold doors to the rear garden and a double door to the side of the property. It has both wall and base units with oak worktops, a 1 and a half bowl sink, an integrated NEFF double oven, NEFF induction hob and dishwasher, a smoke alarm, a granite island with power, space for an American fridge freezer and tiled flooring with underfloor heating.

## Snug

10' 4" max x 10' 8" max ( 3.15m max x 3.25m max )

The snug has a double glazed sash window to the side of the property. It has two TV points, a radiator, an electric log burner and flagstone flooring.

## Playroom

11' x 8' 8" ( 3.35m x 2.64m )

The playroom has a double glazed sash window to the rear of the property and underfloor heating.

## Hall

The hall between the playroom and utility room has a velux skylight and a door to the side of the property.

## Utility Room

11' 7" max x 7' 11" max ( 3.53m max x 2.41m max )

The utility room has underfloor heating, the oil boiler, storage space and space for a washing machine and tumble dryer.

## First Floor

### Landing

The landing has two double glazed sash windows to the side of the property, two loft hatches, two radiators and a smoke alarm.

### Bedroom 1

13' 4" max x 12' 5" max ( 4.06m max x 3.78m max )

Bedroom 1 has a double glazed sash window to the side of the property and a double glazed sash window to the rear of the property. It has an integrated double wardrobe and a radiator.

### En Suite

The en suite has a double glazed sash window to the front of the property. It has a WC, hand wash basin with a vanity unit and mirror, a walk in shower, heated towel rail, extractor fan and underfloor heating.

### Bedroom 2

11' max x 14' max ( 3.35m max x 4.27m max )

Bedroom 2 has a double glazed sash window to the side of the property and a radiator.

### Bedroom 3

9' 2" max x 9' 7" max ( 2.79m max x 2.92m max )

Bedroom 3 has a double glazed sash window to the rear of the property, an integrated double wardrobe and a radiator.

### Bedroom 4

7' 1" max x 10' 7" max ( 2.16m max x 3.23m max )

Bedroom 4 has a double glazed sash window to the front of the property and a radiator.

### Bathroom

The tiled bathroom has a double glazed sash window to the rear of the property. It has a WC, hand wash basin with a vanity unit and mirror, a bath, shower cubicle, heated towel rail, extractor fan and underfloor heating.

## Outside

### Front Garden

The front garden has two gravel driveways for several vehicles, raised shrub bed borders, an EV charger, and a timber built quadruple garage which could be an opportunity for a separate dwelling, subject to consent/ planning permission.

### Rear Garden

The rear garden has a large patio dining area and ample lawn space, external power plugs, external lights, an external tap, side access to the front from both sides of the property, hedge and fence borders, the oil tank, and a swim spa and hot tub with a decked surround.



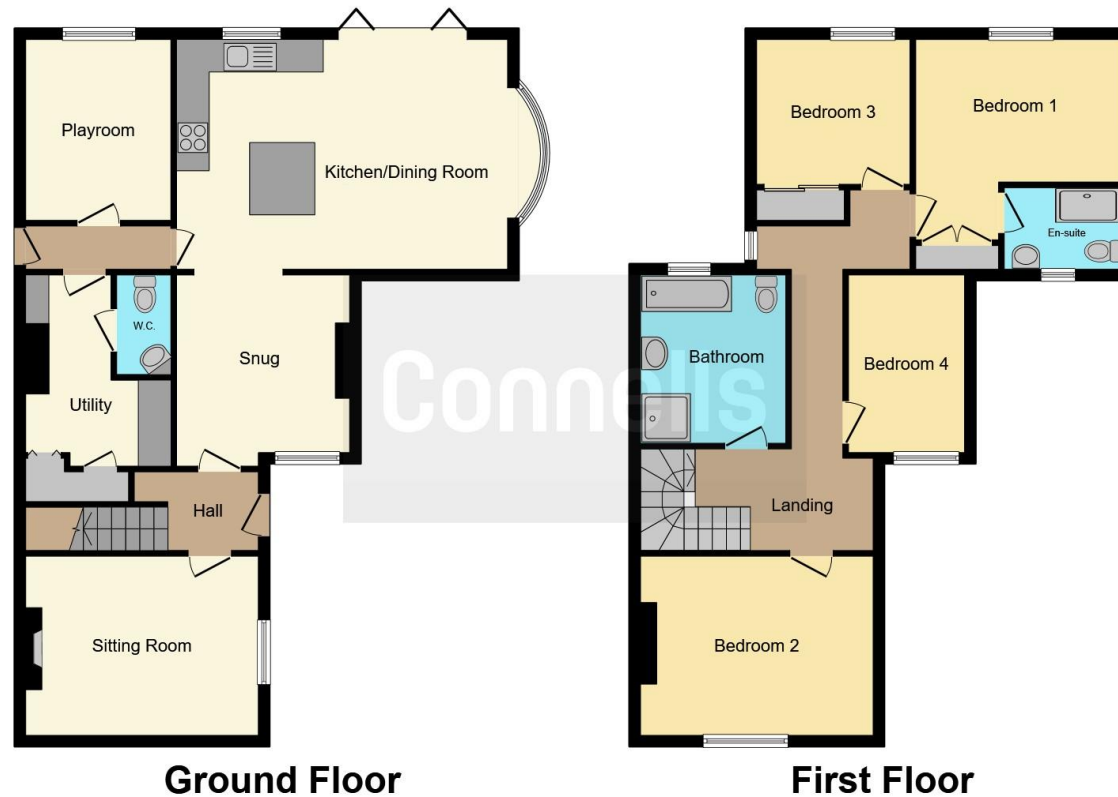












This floor plan is for illustrative purposes only. It is not drawn to scale. Any measurements, floor areas (including any total floor area), openings and orientation are approximate. No details are guaranteed, they cannot be relied upon for any purpose and they do not form part of any agreement. No liability is taken for any error, omission or misstatement. A party must rely upon its own inspection(s). Powered by [www.focalagent.com](http://www.focalagent.com)

To view this property please contact Connells on

**T 01747 821 791**  
**E [gillingham@connells.co.uk](mailto:gillingham@connells.co.uk)**

4 Clive House High Street  
 GILLINGHAM SP8 4QT

EPC Rating: D Council Tax  
 Band: E

Tenure: Freehold

**view this property online [connells.co.uk/Property/GIL306181](http://connells.co.uk/Property/GIL306181)**



1. MONEY LAUNDERING REGULATIONS Intending purchasers will be asked to produce identification documentation at a later stage and we would ask for your co-operation in order that there will be no delay in agreeing the sale. 2. These particulars do not constitute part or all of an offer or contract. 3. The measurements indicated are supplied for guidance only and as such must be considered incorrect. Potential buyers are advised to recheck measurements before committing to any expense. 4. We have not tested any apparatus, equipment, fixtures, fittings or services and it is in the buyers interest to check the working condition of any appliances.

Connells Residential is registered in England and Wales under company number 1489613, Registered Office is Cumbria House, 16-20 Hockliffe Street, Leighton Buzzard, Bedfordshire, LU7 1GN. VAT Registration Number is 500 2481 05.

**See all our properties at [www.connells.co.uk](http://www.connells.co.uk) | [www.rightmove.co.uk](http://www.rightmove.co.uk) | [www.zoopla.co.uk](http://www.zoopla.co.uk)**

Property Ref: GIL306181 - 0009