



**18 Beach Priory Gardens, Southport,
PR8 1RT
£385,000
Subject to Contract**

An early viewing is recommended to appreciate the extent of the accommodation offered by this substantial semi detached family house, installed with gas central heating and part double glazing the property provides accommodation which briefly includes, vestibule, entrance hall with cloak room, front lounge, rear lounge or dining room, dining kitchen, on the first floor there four bedrooms and bathroom and WC and a fifth bedroom is location on the second floor. The property stands in established gardens, there is off road car parking a substantial garage and adjoining summerhouse. The property is situated in a cul-de-sac off Beach Priory Gardens very conveniently located for the nearby facilities of Rotten Row, Lord Street and Southport Town Centre. **NO CHAIN DELAY.**

Enclosed Vestibule

Upvc outer door with double glazed and leaded stained glass insert. Upvc double glazed side windows. Tiled floor. Inner door leading to...

Entrance Hall

Spacious entrance hall with space panelled walls and plate rail, stairs to the first floor.

WC - 1.22m x 1.75m (4'0" x 5'9")

Low level WC, wash hand basin with cupboard below.

Front Lounge - 4.7m x 3.96m (15'5" into bay x 13'0")

Plate rail, fire surround, wall light points.

Rear Lounge/ Dining Room - 5.99m x 3.58m (19'8" into bay x 11'9")

Electric coal effect fire, timber and tile surround and hearth. Wall light points, plate rail.

Dining Kitchen - 5m x 3.05m (16'5" x 10'0")

Side door and window and double doors to the rear garden. Inset single drainer one and half bowl stainless steel sink unit, an extensive range of built in base units with cupboards and drawers, wall cupboards, corner display units, working surfaces. Dresser unit with glazed display cupboards, plate rack and spice drawers. Four ring gas hob with cooker hood above and split level oven and grill, plumbing for washing machine, wall mounted 'Vaillant' gas central heating boiler.

First Floor Landing

Bedroom 1 - 5.03m x 3.63m (16'6" x 11'11")

Extensively fitted with built in wardrobes, dressing table and drawers, vanity sink unit with cupboards and drawers.

Bedroom 2 - 4.57m x 3.96m (15'0" into bay x 13'0")

Leaded double glazed windows.

Bedroom 3 - 4.29m x 2.72m (14'1" x 8'11")

Leaded double glazed windows.

Bedroom 4 - 2.77m x 3.38m (9'1" x 11'1" overall including bay)

Built in linen cupboard.

Bathroom - 1.85m x 2.51m (6'1" x 8'3")

Coloured suite including twin grip panelled bath with thermostatic shower above, pedestal wash hand basin, low level WC, bidet. Tiled walls, spotlighting, extractor.

Second Floor

Bedroom 5 - 3.02m x 3.86m (9'11" x 12'8")

Pedestal wash hand basin.

Outside

Established gardens adjoin the property to the front and rear. The front garden is provided with fixed flower beds and paved parking, driveway at the side leads to a brick built garage with double outer doors and measures 18'9" x 9'1" internally with electric light and power supply. The rear garden has a paved patio, lawn and borders, Upvc double glazed summerhouse measuring 7'4" x 11'5" with access to WC and further store room.

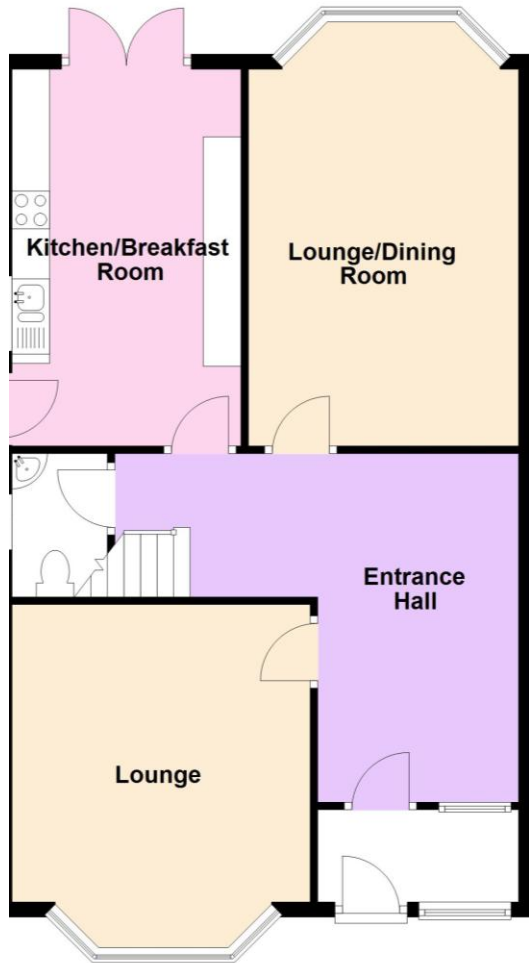
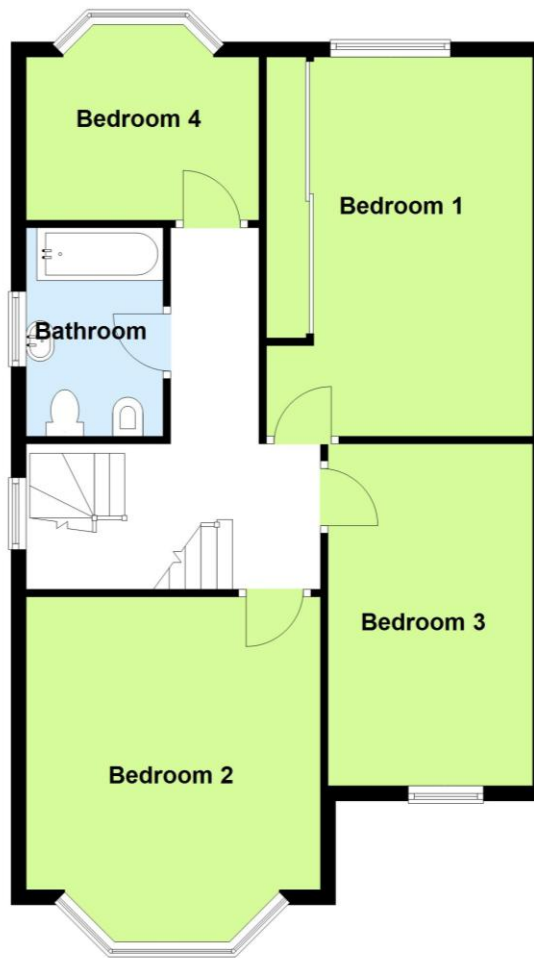
Council Tax

Sefton MBC band E.

Tenure

Freehold.



Ground Floor**First Floor****Second Floor**

1

2

3

4

5

6

7

8

9

10

11

12

13

14

15

16

17

18

19

20

21

22

23

24

25

26

27

28

29

30

31

32

33

34

35

36

37

38

39

40

41

42

43

44

45

46

47

48

49

50

51

52

53

54

55

56

57

58

59

60

61

62

63

64

65

66

67

68

69

70

71

72

73

74

75

76

77

78

79

80

81

82

83

84

85

86

87

88

89

90

91

92

93

94

95

96

97

98

99

100

101

102

103

104

105

106

107

108

109

110

111

112

113

114

115

116

117

118

119

120

121

122

123

124

125

126

127

128

129

130

131

132

133

134

135

136

137

138

139

140

141

142

143

144

145

146

147

148

149

150

151

152

153

154

155

156

157

158

159

160

161

162

163

164

165

166

167

168

169

170

171

172

173

174

175

176

177

178

179

180

181

182

183

184

185

186

187

188

189

190

191

192

193

194

195

196

197

198

199

200

201

202

203

204

205

206

207

208

209

210

211

212

213

214

215

216

217

218

219

220

221

222

223

224

225

226

227

228

229

230

231

232

233

234

235

236

237

238

239

240

241

242

243

244

245

246

247

248

249

250

251

252

253

254

255

256

257

258

259

260

261

262

263

264

265

266

267

268

269

270

271

272

273

274

275

276

277

278

279

280

281