



FINCHLEY ROAD, NW3

£599,999

Two Double Bedrooms
Separate Kitchen
Lift Access
Concierge
Popular Art Deco Building
Chain-Free

@marshandparsons
marshandparsons.co.uk

MARSH &
PARSONS



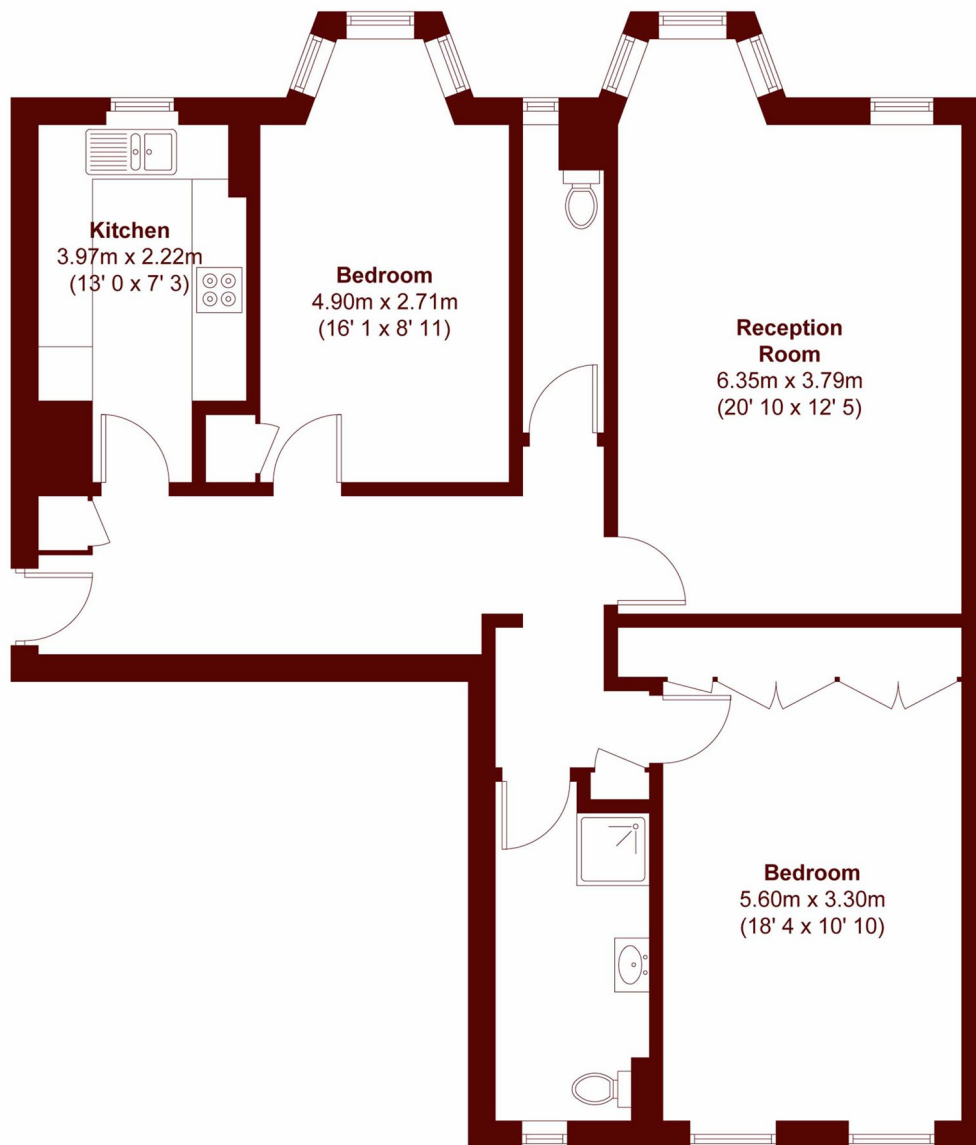
ABOUT THE PROPERTY

Set in an imposing building on a highly connected area of Finchley Road is this two double bedroom flat on the sixth floor in a secure art deco building, with lift access and concierge. With a south west facing reception room, a separate kitchen, and available chain-free, the property is located close to Hampstead and Belsize Park.

St. Johns Court is located amongst the cafés, restaurants, shops and amenities on Finchley Road. Transport links include Finchley Road (Jubilee), Finchley Road & Frognal (Overground) and West Hampstead (Thameslink).



STEP INSIDE FINCHLEY ROAD



APPROX. GROSS INTERNAL FLOOR AREA
960 SQFT / 89.2 SQM

Queen's Park
020 7624 4513

Energy Rating: E We aim to make our particulars both accurate and reliable. However, they are not guaranteed; nor do they form part of an offer or contract. If you require clarification on any points then please contact us, especially if you're traveling some distance to view. Please note that appliances and heating systems have not been tested and therefore no warranties can be given as to their good working order

MARSH &
PARSONS