



**Guide Price**  
**£375,000**

**Freehold**

3x  1x  2x 

**Reginald Road,  
Maidstone, Kent ME16**

**OVER 60?**

Secure this property  
for up to **59% less!**

*Wards*  
Helping you move forwards



## Main features

- Spacious with a sun room to rear
- Off road parking to front
- Garden cabin/office
- Modern fitted kitchen overlooking garden
- Easy access to the town centre

## Accommodation

### GROUND FLOOR

Hallway  
 Cloakroom  
 Lounge/Dining Area: 12'7 x 10'6 (3.84m x 3.20m) plus 11'4 x 10'6 (3.46m x 3.20m)  
 Kitchen: 11'3 x 8'2 (3.43m x 2.49m)  
 Sun Room: 9'7 x 7'4 (2.92m x 2.24m)

### FIRST FLOOR

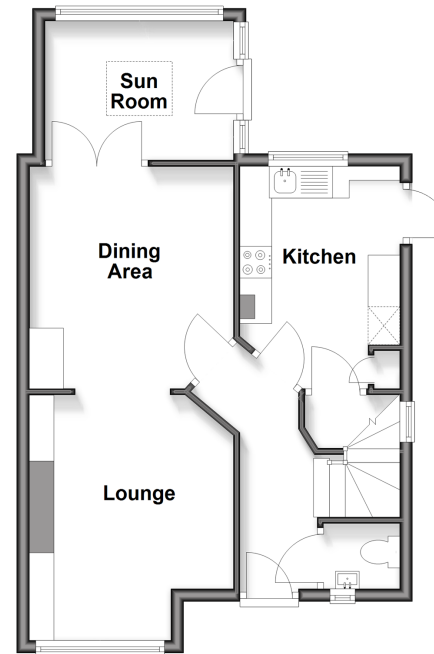
Landing  
 Bedroom 1: 12'9 x 8'7 (3.89m x 2.62m)  
 Bedroom 2: 11'6 x 10'6 (3.51m x 3.20m)  
 Bedroom 3: 11'8 x 7'6 (3.56m x 2.29m)  
 Bathroom

### OUTSIDE

Rear Garden  
 Cabin/Office: 15'5 x 7'4 (4.70m x 2.24m)  
 Off Road Parking

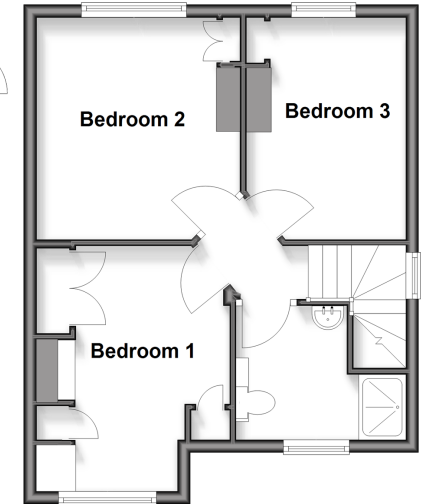
### Ground Floor

Approx. 47.5 sq. metres (510.8 sq. feet)



### First Floor

Approx. 40.6 sq. metres (437.5 sq. feet)



Call Maidstone - 01622 683737 ■ [wardsof Kent.co.uk](http://wardsof Kent.co.uk)

■ Through a Homewise Home For Life Plan people aged 60+ can secure this property for up to 59% less, by purchasing a Lifetime Lease



13158636/20260507/CV/DS