



MOULDING LANE, SE14

£450,000

Two bedroom apartment

Two bathrooms

200 Sq Ft Terrace

25' Open plan lounge

16' Main bedroom

Energy rating: b



ABOUT THE PROPERTY

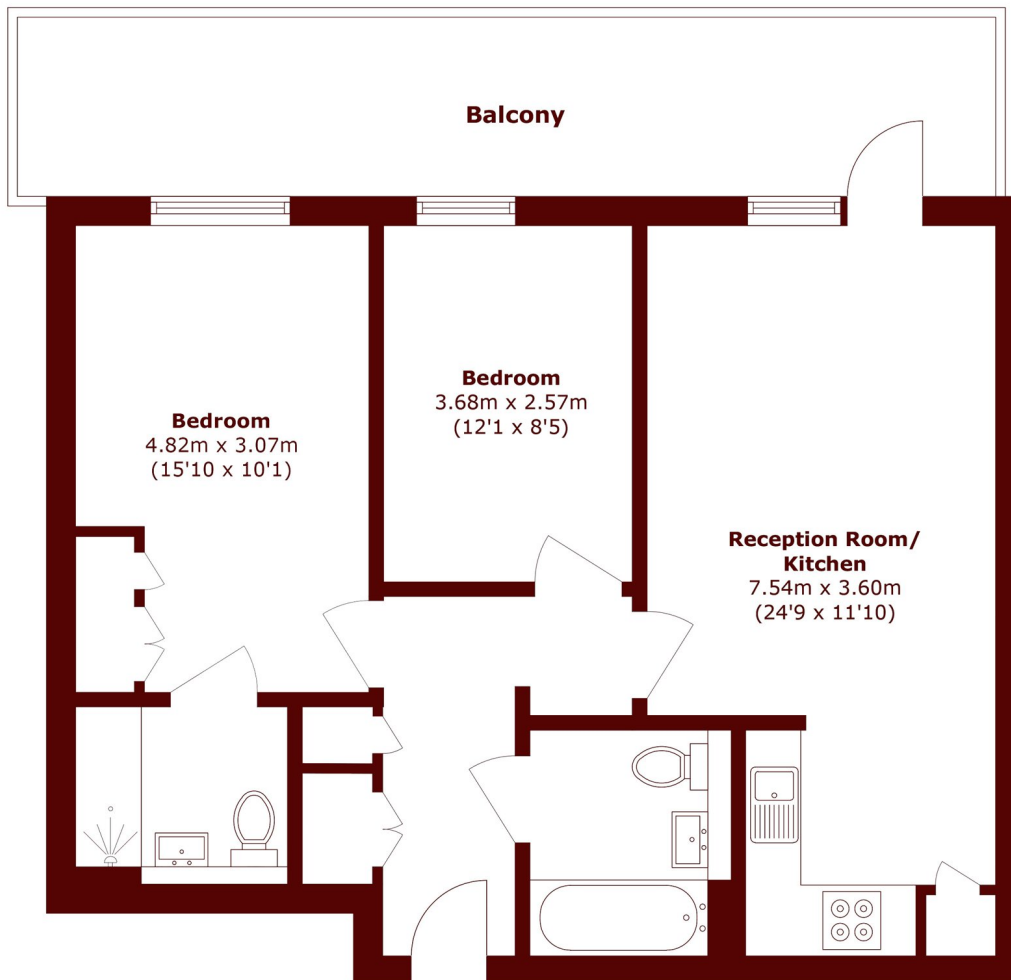
This great size two double bedroom, two bathroom apartment boasts a much larger than average outside terrace area of 200 Sq Ft.

Not only are the sizes sure to please with a 25' open plan living area, 16' main bedroom and 12' second bedroom, all these rooms open onto the terrace.

Features to note for the development are a concierge service, evening security, a private bike garage, and attractive landscaped gardens. The property is adjacent to the Q1 Quietway cycle route straight into town.



STEP INSIDE MOULDING LANE



Total area (approx.): 69.2 sq. m (744.8 sq. ft)

Balcony area (approx.): 18.6 sq. m (200.2 sq. ft)

Brockley
020 8629 8164

Energy Rating: B We aim to make our particulars both accurate and reliable. However, they are not guaranteed; nor do they form part of an offer or contract. If you require clarification on any points then please contact us, especially if you're traveling some distance to view. Please note that appliances and heating systems have not been tested and therefore no warranties can be given as to their good working order

**MARSH &
PARSONS**