

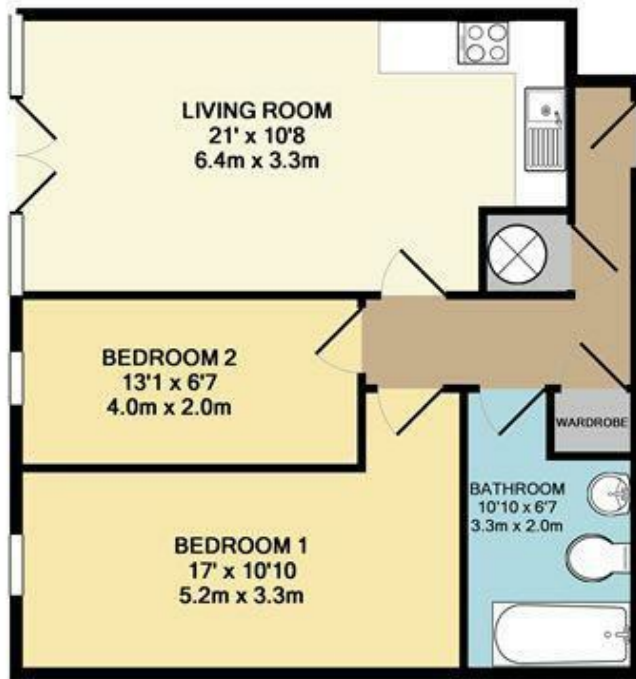


**22 THE LIGHT BUILDINGS, LUMEN COURT LAWSON STREET
PRESTON, PR1 2RA**

£895 PCM

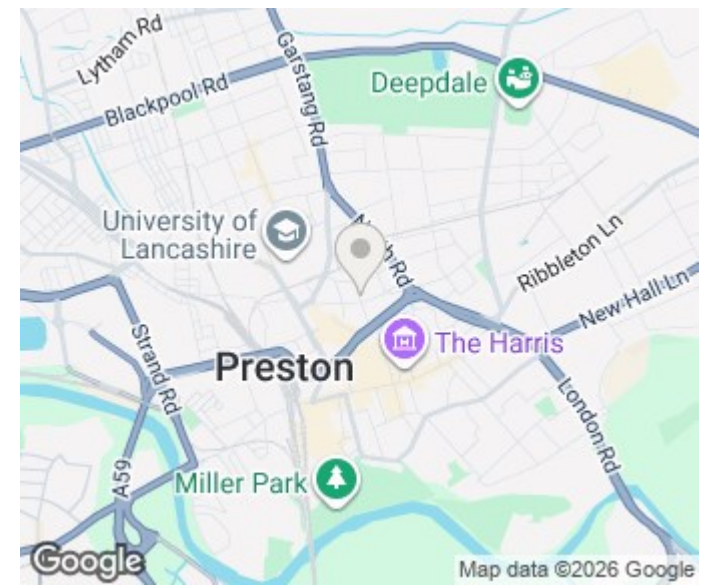
Modern ground floor apartment set in a prime location within a short walking distance to the University of Central Lancashire and convenient for the city centre. This apartment is presented to a high standard throughout and comprises : entrance hall, superb open plan lounge, modern light beech fitted kitchen with integrated appliances, two good sized bedrooms and an elegant white bathroom suite. UPVC double glazed windows and electric heating. Fully Furnished to a high standard. Available 6th July 2026.

buckleyfrayne



TOTAL APPROX. FLOOR AREA 583 SQ.FT. (54.1 SQ.M.)

Whilst every attempt has been made to ensure the accuracy of the floor plan contained here, measurements of doors, windows, rooms and any other items are approximate and no responsibility is taken for any error, omission, or mis-statement. This plan is for illustrative purposes only and should be used as such by any prospective purchaser. The services, systems and appliances shown have not been tested and no guarantee as to their operability or efficiency can be given.
Made with Metropix ©2013



Energy Efficiency Rating		Current	Potential
Very energy efficient - lower running costs			
(92 plus) A			
(81-91) B			
(69-80) C		78	84
(55-68) D			
(39-54) E			
(21-38) F			
(1-20) G			
Not energy efficient - higher running costs			
England & Wales		EU Directive 2002/91/EC	

Agents Note: Whilst every care has been taken to prepare these particulars, they are for guidance purposes only. All measurements are approximate and are for general guidance purposes only and whilst every care has been taken to ensure their accuracy, they should not be relied upon and potential buyers/tenants are advised to recheck the measurements

Manchester Office Lettings
6-14 Great Ancoats Street
Northern Quarter
Manchester
M4 5AZ

0161 236 0004
mark.buckley@buckleyfrayne.co.uk
www.buckleyfrayne.co.uk

buckleyfrayne