



OVER 60?
Secure this property
for up to **59% less!**

Guide Price
£220,000

Freehold

2x  1x  1x 

**St. Bartholomew's
Close, Dover, Kent, CT17**

Wards
Helping you move forwards



Main features

- Perfect starter home in a tranquil cul-de-sac
- Convenient off-street parking
- Easy-to-maintain garden for low-effort outdoor space
- Short walk to Dover town centre shops and local schools
- Calm setting near Dover Priory railway station

Accommodation

GROUND FLOOR

Entrance Hall

Lounge : 12'2 x 10'8 (3.71m x 3.25m)

Kitchen : 13'8 x 8'6 (4.17m x 2.59m)

Downstairs Cloakroom

FIRST FLOOR

Landing

Bathroom : 9'1 x 5'6 (2.77m x 1.68m)

Bedroom 2 : 11'5 x 7'7 (3.48m x 2.31m)

Bedroom 1 : 10'8 x 9'1 (3.25m x 2.77m)

OUTSIDE

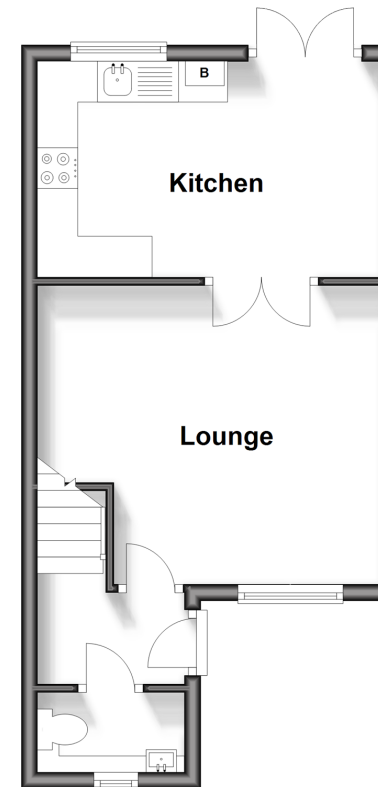
Off Road Parking

Front Garden

Rear Garden

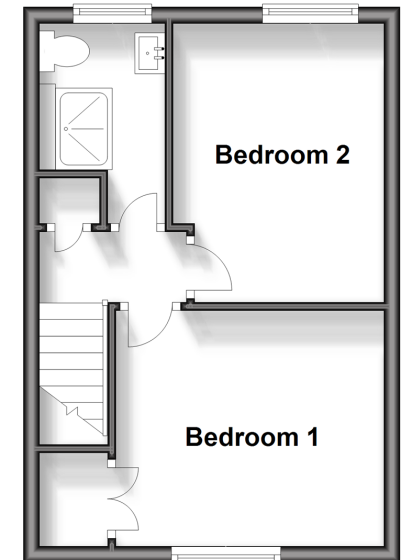
Ground Floor

Approx. 31.4 sq. metres (337.9 sq. feet)



First Floor

Approx. 27.2 sq. metres (293.1 sq. feet)



Call Dover - 01304 214876 ■ wardsof Kent.co.uk

- Legal advice should be taken to verify fixtures/fittings, planning, alterations and/or lease details
- Appliances & services are untested, dimensions are approximate and floor plans are not to scale
- Through a Homewise Home For Life Plan people aged 60+ can secure this property for up to 59% less, by purchasing a Lifetime Lease



10735947/20260211/SB/OV