



## Telfords Yard, E1W

£3,250 Per month

 2  1  2  C

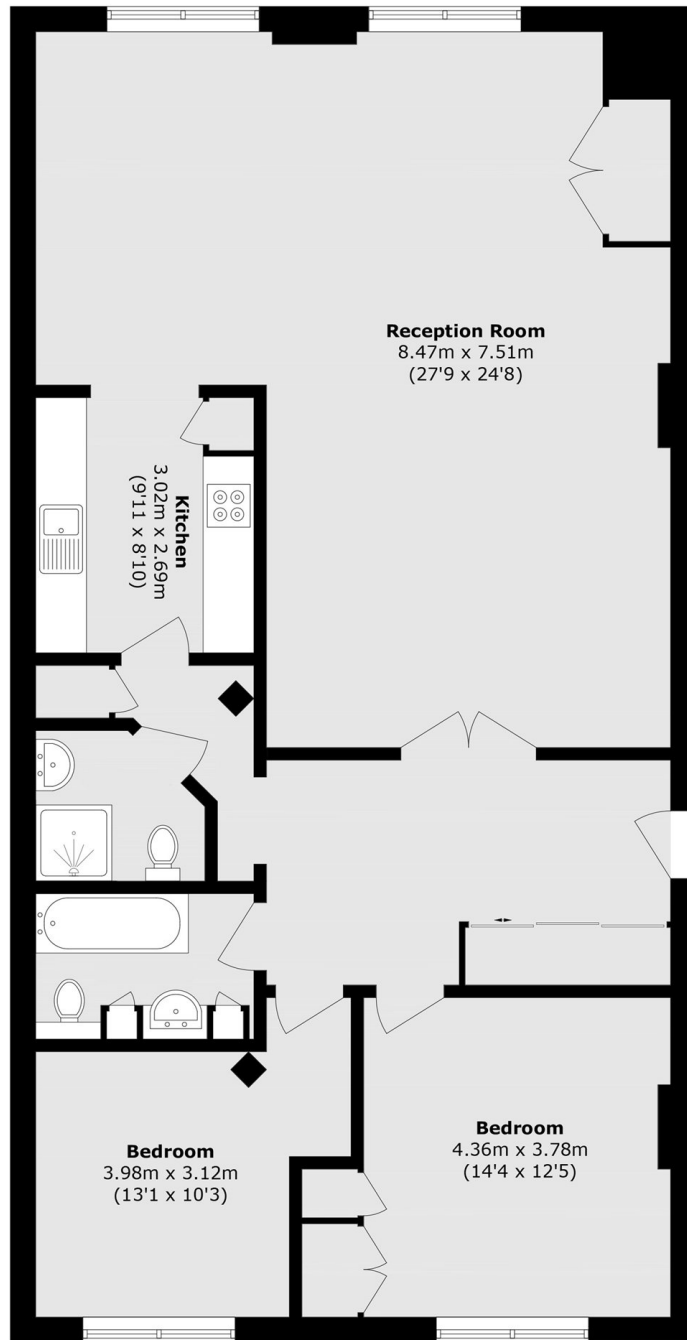
- Warehouse Conversion
- Two Bedrooms
- Two Bathrooms
- Ample Living Space
- Concierge and Parking
- West Wapping Location



Spectacular two bedroom apartment furnished to a high standard in this characterful and sought after warehouse conversion. Offering over 1,200 square feet of living space this apartment comprises of an incredibly large reception, a separate fully fitted kitchen, two bedrooms with ample storage and two bathrooms. Telfords Yard is a picturesque converted warehouse benefitting from secure underground car parking and 24-hour concierge service.

Ideally located close to St Katharine's Docks with a wide selection of pubs, bars, restaurants and cafés nearby. Only a short walk from Tower Hill stations, DLR links, Wapping Overground Station, and buses right around the corner for an easy access to the City, London Bridge, Canary Wharf or Shoreditch.





Total area (approx.): 114.2 sq. m (1229.2 sq. ft)

35A Wapping High Street,  
London, E1W 1NR  
020 7702 3456  
ea2group.com



Energy Rating: C We aim to make our particulars both accurate and reliable. However they are not guaranteed; nor do they form part of an offer or contract. If you require clarification on any points then please contact us, especially if you're travelling some distance to view. Please note that appliances and heating systems have not been tested and therefore no warranties can be given as to their good working order.