



Arlington Road, NW1

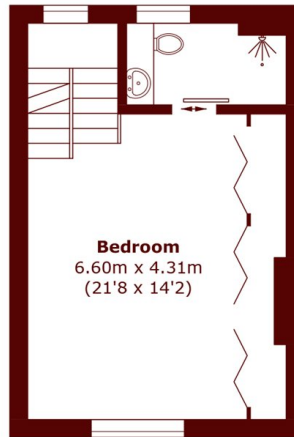
£1,800,000



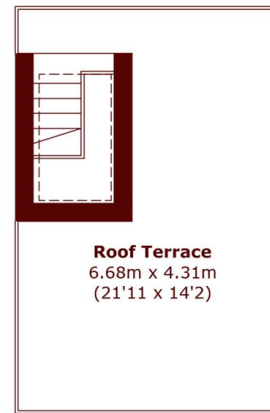
- Private Roof Terrace
- Balcony

- Two Double Bedrooms
- Rear Garden

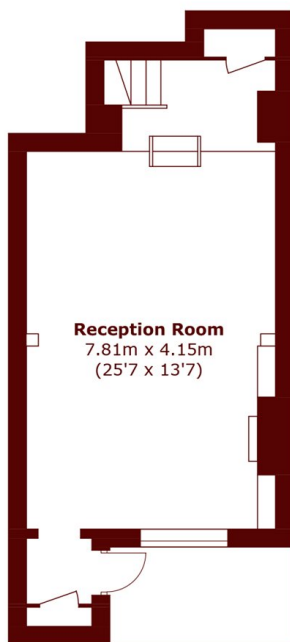
- Two Reception Rooms
- Two Bathrooms



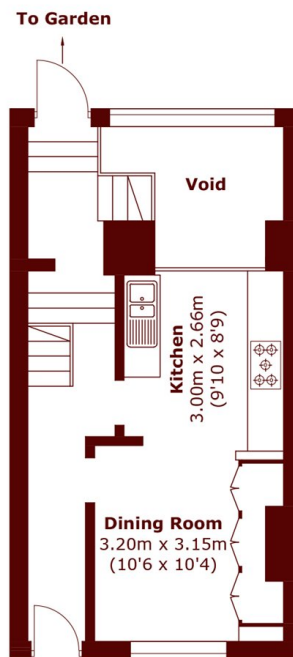
Second Floor



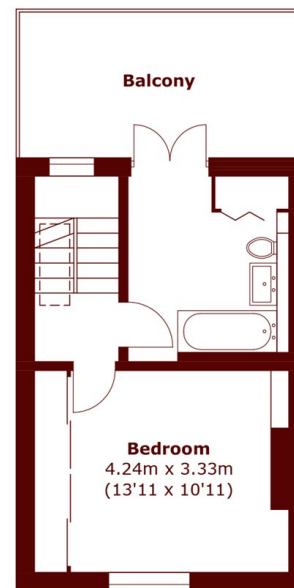
Third Floor



Lower Ground Floor



Ground Floor



First Floor

Total area (approx.): 122.6 sq. m (1,319.5 sq. ft)
(Excluding Void)

Roof Terrace: 23.4 sq. m (251.9 sq. ft)

Balcony: 11.5 sq. m (123.8 sq. ft)

Marsh & Parsons Camden

27 Parkway, London, NW1

7PN

020 7244 2200