



4 Merchant Square East, London, W2 1AN

£5,500 Per Month

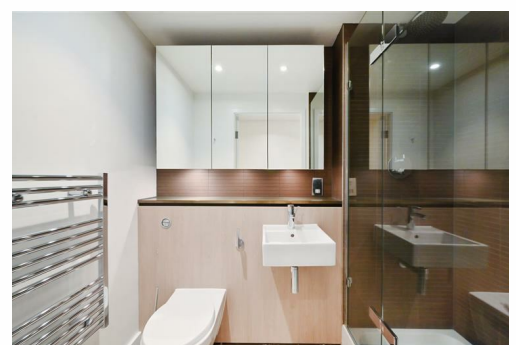


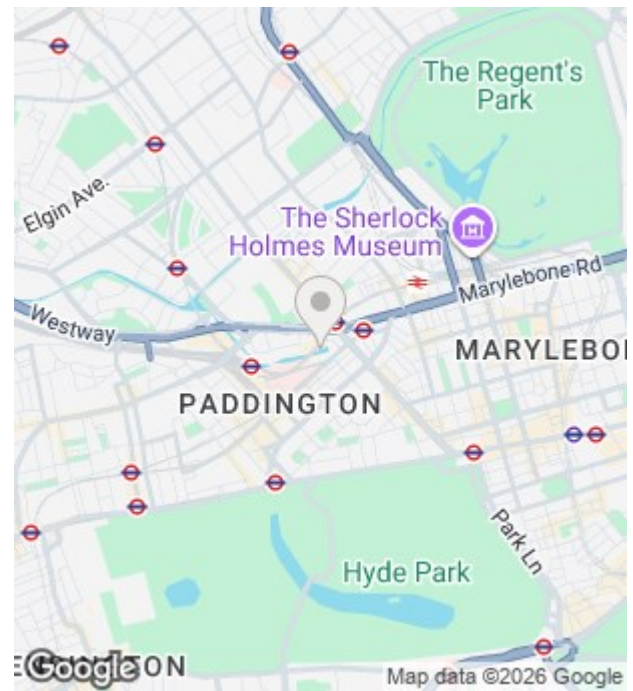
This spacious and bright apartment located on the 6th floor, comprises a beautiful reception room with a modern fitted open plan kitchen, three large bedrooms and two bathrooms.

Apartment is fully furnished and newly refurbished. Benefits from underfloor heating in bathroom and air conditioning throughout.

The apartment offers easy access to superb transport links such as Paddington Train Station (Bakerloo, Hammersmith & City, Circle, District lines and Heathrow express) and Edgware Road (Circle, District and Bakerloo lines) concierge service, as well as on-site management team and secure underground parking if required by separate negotiation.

- Spacious Three Bedroom Apartment
- Newly Refurbished
- Underfloor Heating in Bathroom
- Modern Openplan Kitchen
- Close to Transport and Amenities
- Two Bathrooms
- Fully Furnished
- Air Conditioning
- Concierge Services
- Council Tax Band G





Energy Efficiency Rating		Current	Potential
<i>Very energy efficient - lower running costs</i>			
(92 plus) A			
(81-91) B			
(69-80) C			
(55-68) D			
(39-54) E			
(21-38) F			
(1-20) G			
<i>Not energy efficient - higher running costs</i>			
England & Wales		EU Directive 2002/91/EC	

Environmental Impact (CO ₂) Rating		Current	Potential
<i>Very environmentally friendly - lower CO2 emissions</i>			
(92 plus) A			
(81-91) B			
(69-80) C			
(55-68) D			
(39-54) E			
(21-38) F			
(1-20) G			
<i>Not environmentally friendly - higher CO2 emissions</i>			
England & Wales		EU Directive 2002/91/EC	

Unit 10 Paddington Works 8 Hermitage Street, London, W2 1BE
 Tel: +44(O)20 3019 6151 Email: lettings@grange.london