



## Tidemill Square, SE10

£700,000

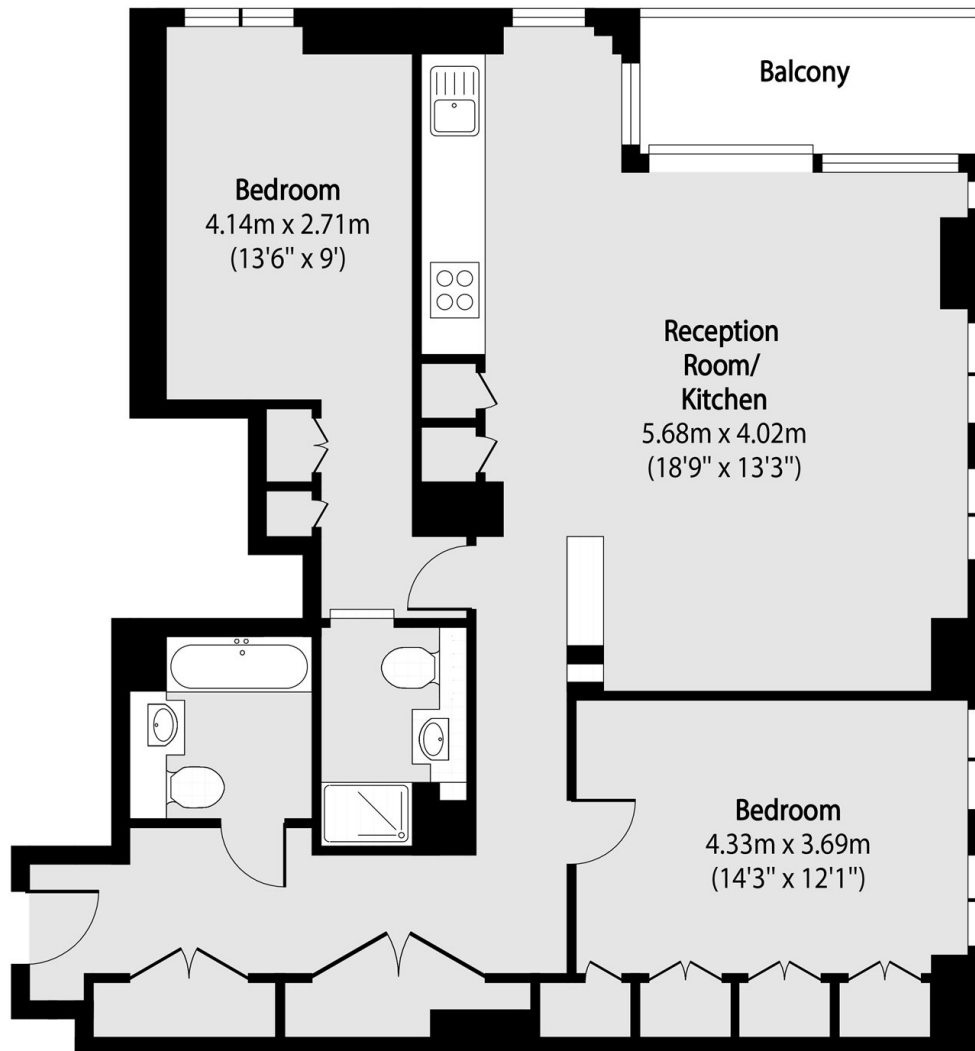
This luxurious two double bedroom two bathroom apartment with gorgeous views across the River Thames. Situated in this prestigious building and benefitting from a private balcony overlooking the river as well as amenities such as a gym, concierge, cinema room and communal roof terrace.

Greenwich Peninsula is a modern community that has been designed with the residents in mind offering a range of amenities, which include North Greenwich Station for direct connections to Canary Wharf, London Bridge and The West

### Features

- Amazing River Views
- Two Bedrooms
- Immaculate Throughout
- Cinema Room
- Concierge
- 26th Floor

Tidemill Square,  
London, SE10



Total area (approx): 91.05 sq m (980 sq. ft)

Balcony total area (approx): 5.55 sq m (60 sq. ft)