



St Stephens Gardens

Notting Hill, W2

£3,141 pcm

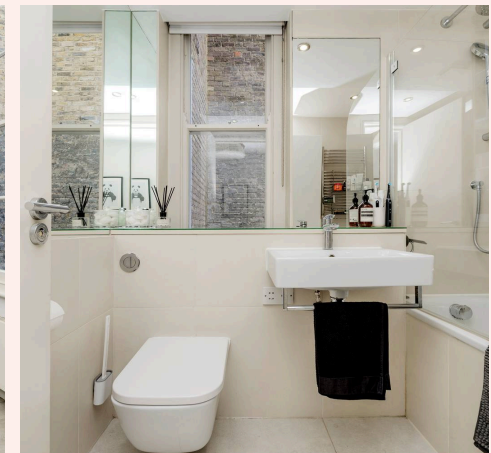
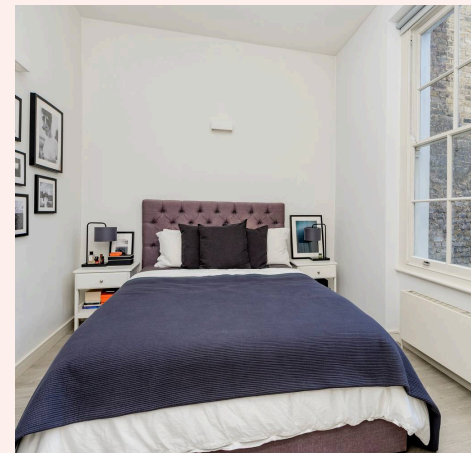
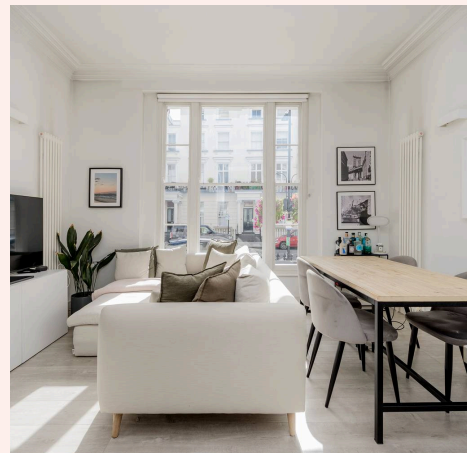
St. Stephens Gardens Notting Hill, W2

A centrally located and contemporary designed flat is available to let in W11. The property has wooden floors throughout, a contemporary kitchen and bathroom and ample storage throughout. St Stephen's Gardens is located nearby the beautiful open spaces of Hyde Park with Portobello Road and Westbourne Grove close by for the boutiques, cafes and restaurants. The nearest underground station is Royal Oak with links to Paddington Station for fast links to Heathrow Airport. Bayswater and Queensway Tube stations are both within easy reach.

Council Tax band: TBD

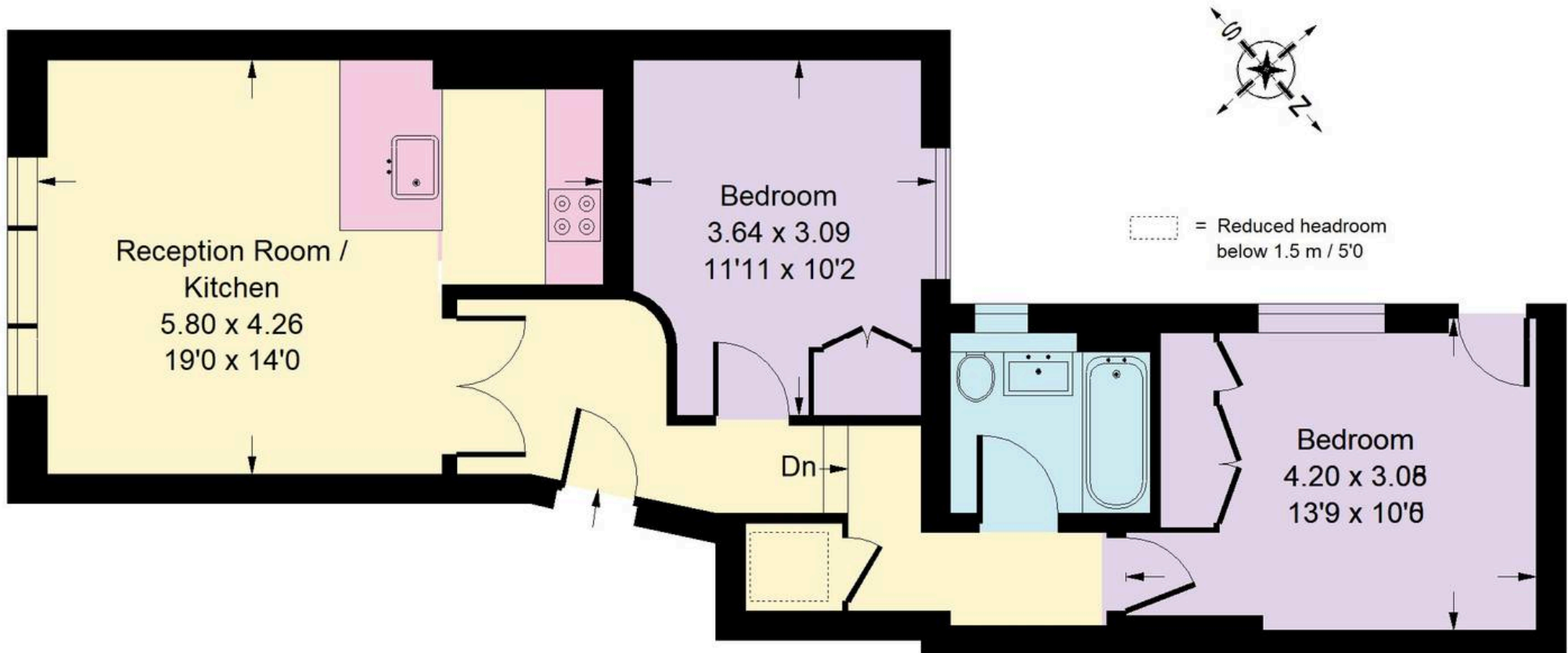
EPC Energy Efficiency Rating: C

EPC Environmental Impact Rating: C



Stephens Gardens, W2

Approx. Gross Internal Area
60.6 sq m / 652 sq ft



Raised Ground Floor

Whilst every attempt has been made to ensure the accuracy of the floor plan, measurements are approximate and not to scale.
No guarantee is given on the total square footage of the property quoted on the plan. Figures given are for guidance.
Plan is for illustration purposes only, not to be used for valuations.



Rigby & Marchant

115 Westbourne Studios 242 Acklam Road, London - W10 5JJ

020 7221 7210

sales@rigbyandmarchant.co.uk

www.rigbyandmarchant.co.uk/

R&M