



Priory House  
12 Rampayne Street, SW1V

CHESTERTONS





A bright and very well presented split-level one double bedroom flat, offering approximately 547 sq ft of well-proportioned living space, set across the second and third floors of a sought-after and peaceful purpose-built Pimlico development with lift access.

The accommodation comprises a spacious and light-filled reception room, complemented by a modern open-plan kitchen, creating an ideal space for both relaxing and entertaining. The property further features a stylish, contemporary family bathroom and a generously sized double bedroom, complete with a versatile open walk-in wardrobe area.

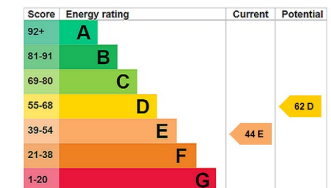
Ideally located just moments from Pimlico Station, the property benefits from excellent transport links while enjoying a quiet residential setting.

This attractive home offers a smart layout, excellent natural light throughout, and a highly desirable central London location, making it an ideal purchase for first-time buyers, investors, or those seeking a well-connected pied-à-terre.

The property is conveniently situated moments from the shops, cafes and restaurants of Pimlico and Westminster. There are excellent transport links (Victoria, Circle, District underground lines), with easy access to mainline stations at Victoria and Vauxhall.

- A Very Well Presented, Spacious Split-Level Flat
- Spacious Reception
- Modern Open Plan Kitchen
- One Double Bedroom with Open Walk in Wardrobe
- A Stylish Family Bathroom
- Lift Access
- No Onward Chain

Asking Price £475,000



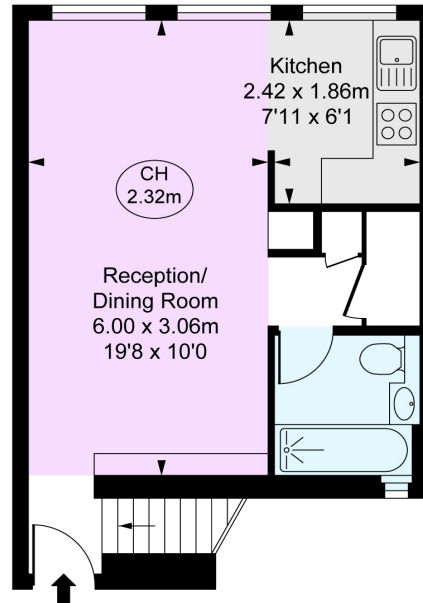
**Tenure:** Leasehold Expiring on 12<sup>th</sup> June 2111  
**Service Charge:** £2,700 p.a. (Approximately)  
**Ground Rent:** £10 p.a.  
**Local Authority:** Westminster  
**Council Tax Band:** C

*Chestertons Westminster & Pimlico Sales*

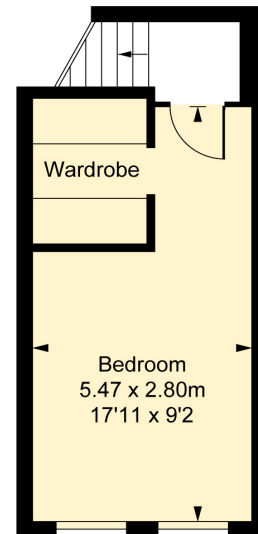
105 Wilton Road  
 London  
 SW1V 1DZ  
 westminster@chestertons.co.uk  
 020 3040 8201  
 chestertons.co.uk

**Priory House,  
Rampayne Street, SW1V**  
Approximate Gross Internal Area  
**50.81 sq m / 547 sq ft**

( CH = Ceiling Heights )



**Third Floor**  
Approximate Gross Internal Area  
**33.01 sq m / 355 sq ft**



**Second Floor**  
Approximate Gross Internal Area  
**17.81 sq m / 192 sq ft**



This plan is not to a given scale. A detailed layout plan to scale for valuation is available on request. All measurements and areas are within 1% tolerance and have been prepared in accordance with industry standards as defined in the RICS Code of Measuring Practice  
© Fulham Performance

Chesterton UK Services Limited trading as Chestertons for themselves and for the vendor of this property whose agents they are, give notice that (i) these particulars do not constitute any part of an offer or contract, (ii) all statements contained within these particulars are made without responsibility on the part of Chestertons or the vendor, (iii) whilst made in good faith, none of the statements contained within these particulars are to be relied upon as a statement or representation of fact, (iv) any intending purchasers must satisfy themselves by inspection or otherwise as to the correctness of each of the statements contained within these particulars, (v) the vendor does not make or give either Chestertons or any person in their employment any authority to make or give representation or warranty whatsoever in relation to this property. Wide angle lenses may be used. ©Copyright Chestertons | Chesterton UK Services Limited | Registered Office 5th Floor, The Lantern, 75 Hampstead Road, London, NW1 2PL Registered Company Number 05334580.



This paper is  
100% recyclable