



Key Features

- ◆ Top-floor, studio apartment
- ◆ Convenient St Anthony's location
- ◆ Close to local shops and transport links
- ◆ Off road parking
- ◆ Leasehold
- ◆ EPC rating E



Rotunda Road, St Anthony's Hill, Eastbourne

£90,000



Northwood are delighted to offer to market this top-floor, studio apartment conveniently located in the St Anthony's area of Eastbourne.

Accommodation consists of living space/bedroom, kitchen and bathroom with shower over bath.

Further benefits include: off-road parking, electric heating, electric oven and built-in storage.

Located in the popular St Anthony's Hill area of Eastbourne, close to major supermarkets, bus routes and local amenities, this lovely studio apartment sits on the edge of green fields, offering an excellent opportunity for investors or first-time buyers.

Please view our immersive virtual tour to fully appreciate this fantastic property: <https://tour.giraffe360.com/8dec32b1ceba46038fc016edcf5d35f2>





Mobile Phone Coverage and Broadband speeds can be checked on the Ofcom website: <https://checker.ofcom.org.uk/>

Council Tax Band: A £1770

Lease: 999 years from 29 September 1969

Ground Rent: £50 per annum

Service Charge: £900 per annum

Exterior and Approach

Manton Court is a purpose-built block of flats in the popular St Anthony's Hill area of Eastbourne, looking out over green fields.

Entry is via a raised walkway above the communal car park

Entrance

1.41m x 0.91m (4'7" x 3'0")

Carpeted entrance with secure entry phone and space for coats and shoes

Studio

4.83m x 4.22m (15'10" x 13'10")

Large studio room, carpeted with electric heater, built-in wardrobe and uPVC double-glazed windows to front aspect.

Some of the studio flats in this building have added a partition to create a separate bedroom space

Kitchen

2.64m x 1.72m (8'8" x 5'7")

Fitted kitchen with laminate flooring, wood-effect laminate worksurfaces over white cabinets, extractor fan, stainless steel sink and drainer and space/plumbing for electric cooker and washing machine

Bathroom

1.72m x 1.7m (5'7" x 5'7")

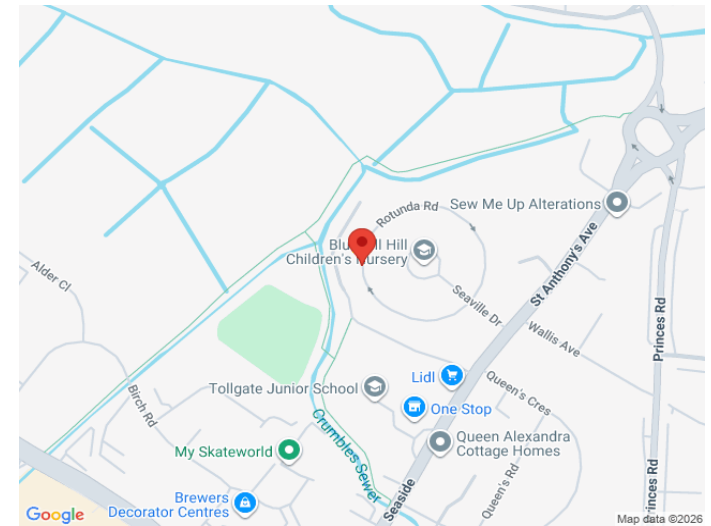
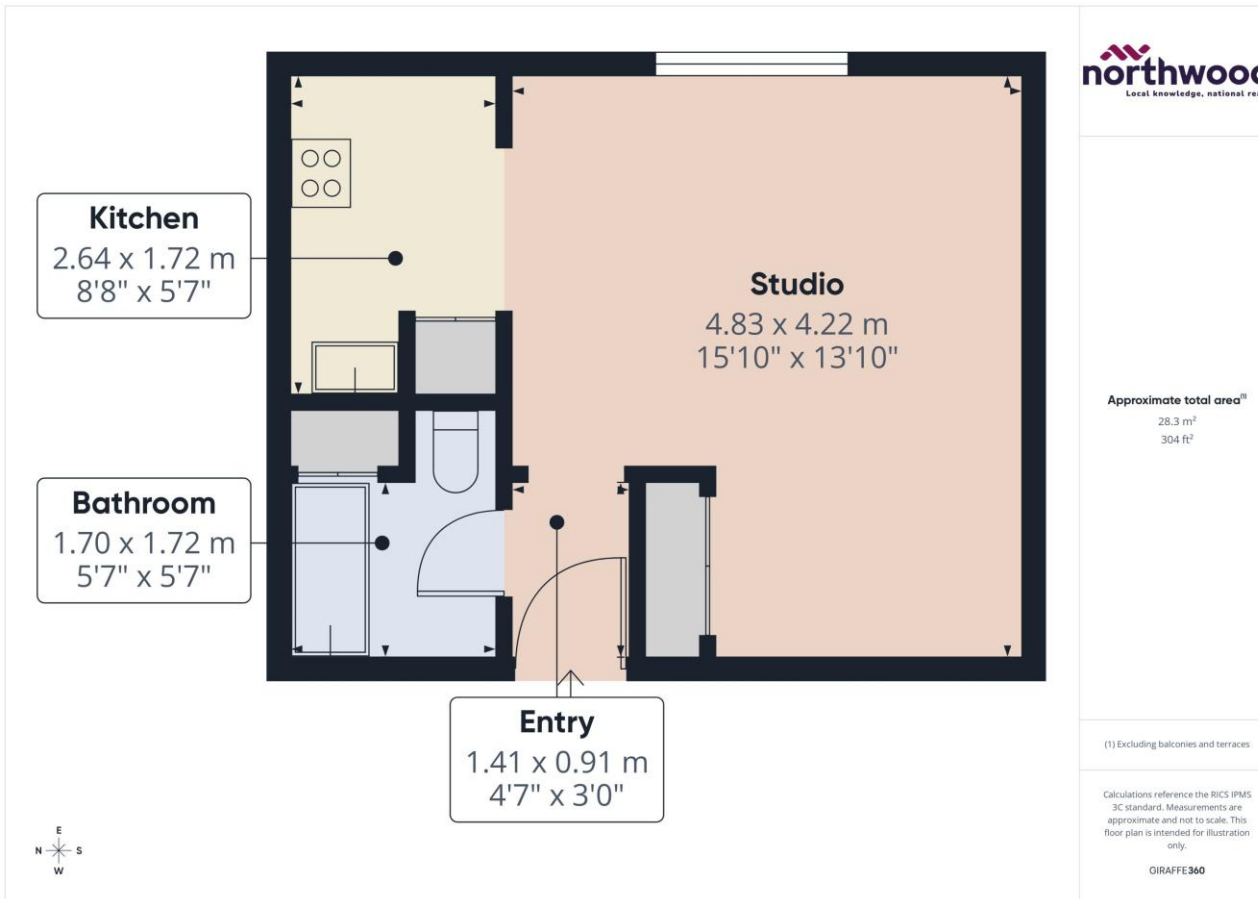
White-tiled bathroom with tiled floor and white suite comprising basin, WC and bath with electric shower over

Parking

Off-road parking on a first-come, first-served basis







Northwood

81-83 South Street
Eastbourne
BN21 4LR
01323 744544
eastbourne@northwooduk.com