



Guide Price
£700,000

Freehold

3x  3x  2x 

**The Street, Hartlip,
Sittingbourne, Kent,
ME9**

OVER 60?

Secure this property
for up to **59% less!**

Wards
Helping you move forwards



Main features

- Attractive and charming family home
- Spacious living with flexible accommodation
- Private rear garden and generous driveway
- Being sold as chain free
- Situated in the sought after village of Hartlip but still in reach of the local amenities and transport links

Accommodation

GROUND FLOOR

- Porch
- Entrance Hall
- Shower Room
- Lounge: 17'11 x 11'8 (5.46m x 3.56m)
- Dining Room: 13'8 x 11'8 (4.17m x 3.56m)
- Kitchen/Breakfast Room : 13'4 x 11'8 (4.07m x 3.56m)
- Utility Room: 10'5 x 8'0 (3.18m x 2.44m)

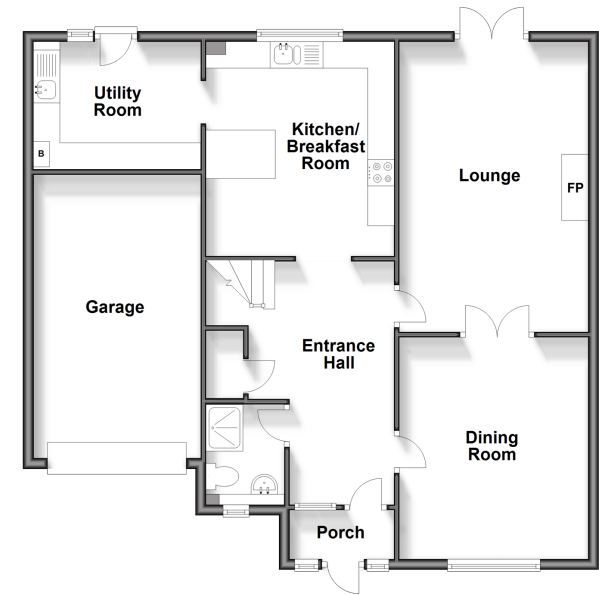
FIRST FLOOR

- Landing
- Bedroom 1 : 15'0 x 10'9 (4.58m x 3.28m)
- En-Suite Shower Room
- Bedroom 2 : 12'1 x 11'1 (3.69m x 3.38m)
- Bedroom 3 : 11'0 x 10'6 (3.36m x 3.20m)
- Bathroom

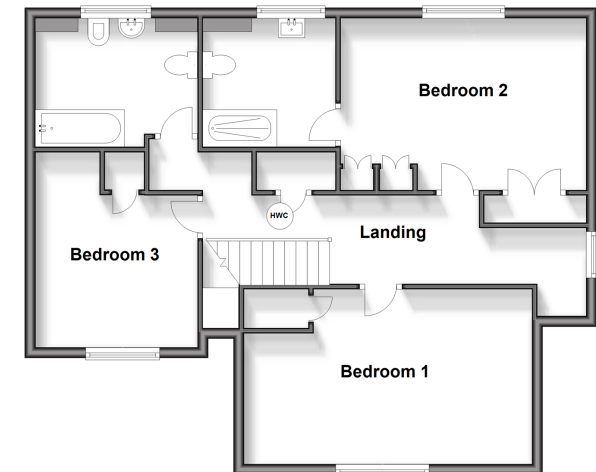
OUTSIDE

- Front Garden
- Rear Garden
- Garage
- Driveway

Ground Floor
Approx. 94.6 sq. metres (1018.4 sq. feet)



First Floor
Approx. 75.7 sq. metres (815.0 sq. feet)



Call Rainham - 01634 373531 ■ wardsof Kent.co.uk

- Legal advice should be taken to verify fixtures/fittings, planning, alterations and/or lease details
- Appliances & services are untested, dimensions are approximate and floor plans are not to scale
- Through a Homewise Home For Life Plan people aged 60+ can secure this property for up to 50% less, by purchasing a Lifetime Lease.



11337500/20251021/NJ/NJ