



## Twickenham Road, TW7

£1,950 Per calendar month

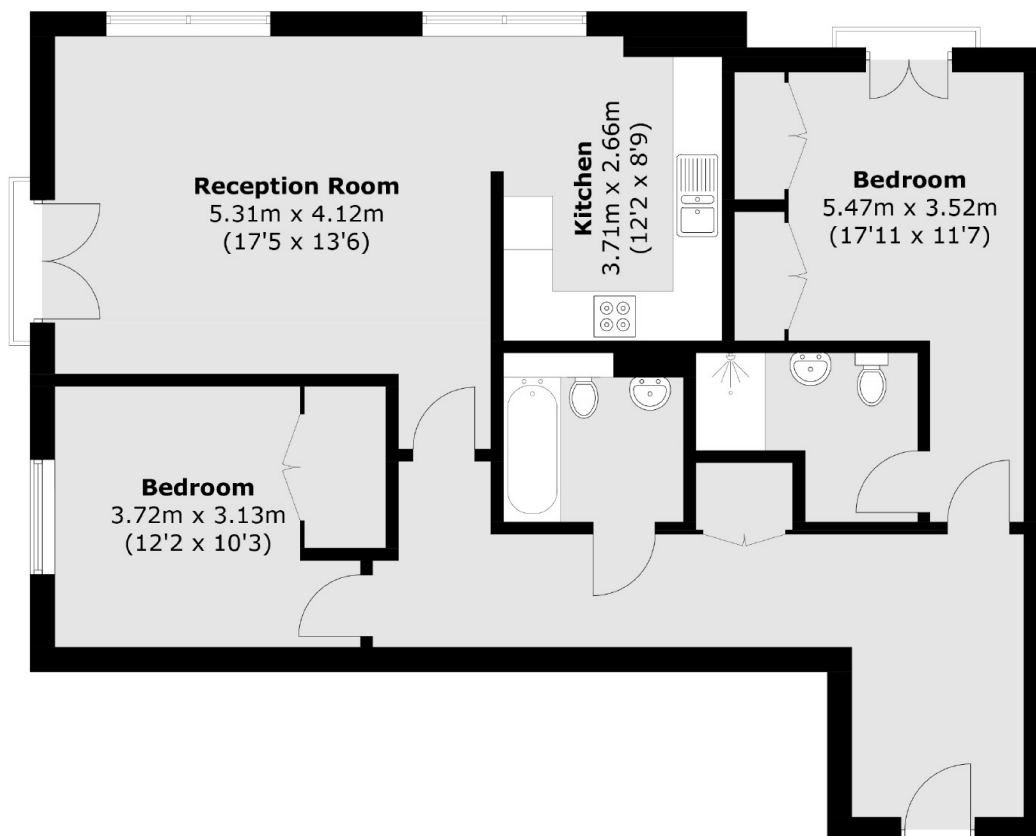
A well presented two double bedroom apartment situated in a modern gated development with secure parking. Exceptionally stylish throughout, offering spacious and versatile living.

Holme Court is located close to the charming amenities of Old Isleworth and is only a short distance from the River Thames and its delightful towpath walk to Richmond town centre.

### Features

- Modern Development
- Large Living Room
- Large Kitchen
- Two Double Bedrooms
- Two Bathrooms
- Underground Parking

# Twickenham Road, Isleworth, TW7



Total area (approx.): 91.1 sq. m (980.6 sq. ft)