

Cricklewood Broadway, NW2

£1,000,000

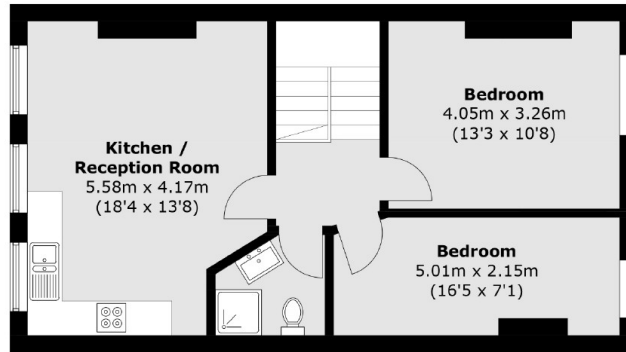
A fantastic investment opportunity comprising three fully renovated apartments, ideally located for transport and amenities. There is a split level one bedroom maisonette, a large studio and a two double bedroom apartment.

Conveniently located within easy reach of West Hampstead, Kilburn and Cricklewood, with both Kilburn tube station (Jubilee line) and Brondesbury Overground station close by. Multiple amenities are found nearby at Mill Lane, West End Lane and Kilburn High Road.

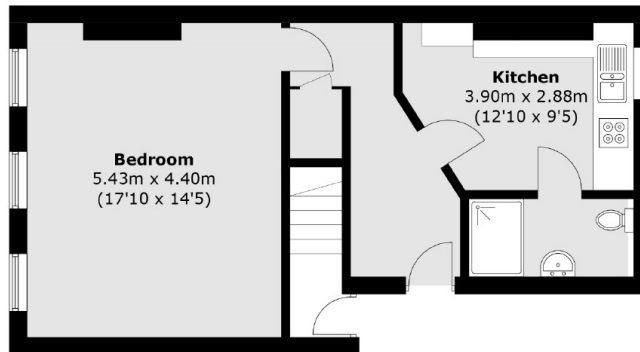
Features

- Investment Opportunity
- Three Apartments
- No Onward Chain
- Fully Renovated
- Communal Garden
- Extension Potential

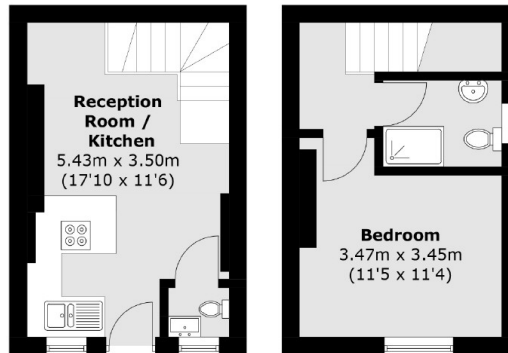
Cricklewood Broadway, London, NW2



Second Floor
Flat 3



First Floor
Flat 2



Ground Floor **First Floor**
Flat 1

Total area (approx.) Flat 1: 38.3 sq. m (412.3 sq. ft)
Flat 2: 48.5 sq. m (522.0 sq. ft)
Flat 3: 58.6 sq. m (630.8 sq. ft)