

# Horton & Senate



## 8 Tudor Coppice, Solihull, B91 3DE

£1,295

- 1st Floor Apartment
- Lounge/Diner
- Council Tax - Band D
- Unfurnished
- 2 Double Bedrooms
- 2 Bathrooms
- EPC - Rating C
- Close to Solihull Town Centre
- Allocated Parking
- Available Mid May

49a Station Road, Knowle, Solihull, West Midlands, B93 0HN  
01564 773200

[info@senateproperty.co.uk](mailto:info@senateproperty.co.uk)

# 8 Tudor Coppice, Solihull B91 3DE

Horton & Senate are delighted to offer this well presented two double bedroom first floor apartment with allocated and visitors parking. Located close to Solihull Town Centre and with M42 motorway link close by. Benefiting from double glazing, electric heating and comprising of secure communal entrance with intercom system, communal staircase to all floors, entrance hallway, lounge with feature fireplace, separate dining area, fitted kitchen, en-suite shower room and principal bathroom.

2

2

2

C

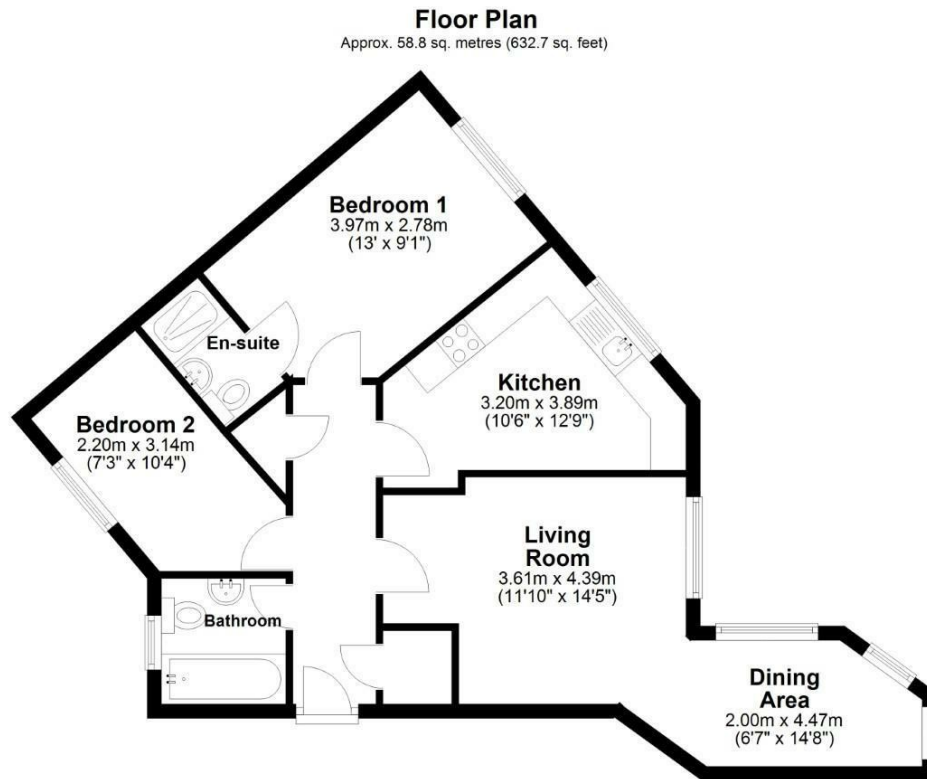
Council Tax Band: D



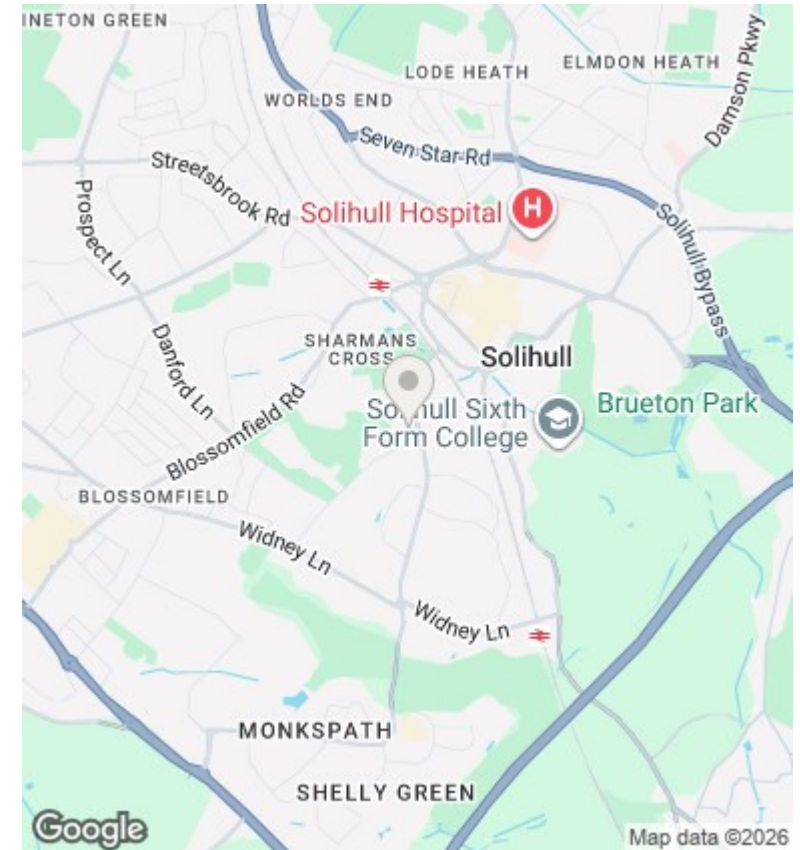








Total area: approx. 58.8 sq. metres (632.7 sq. feet)



## Directions

## Viewings

Viewings by arrangement only. Call 01564 773200 to make an appointment.

## Council Tax Band

B

Energy Efficiency Rating		
	Current	Potential
<i>Very energy efficient - lower running costs</i>		
(92 plus) <b>A</b>		
(81-91) <b>B</b>		<b>84</b>
(69-80) <b>C</b>	<b>75</b>	
(55-68) <b>D</b>		
(39-54) <b>E</b>		
(21-38) <b>F</b>		
(1-20) <b>G</b>		
<i>Not energy efficient - higher running costs</i>		
<b>England &amp; Wales</b>	EU Directive 2002/91/EC	