



Maidens Close, Norwich - NR7 0RS

**STARKINGS
&
WATSON**

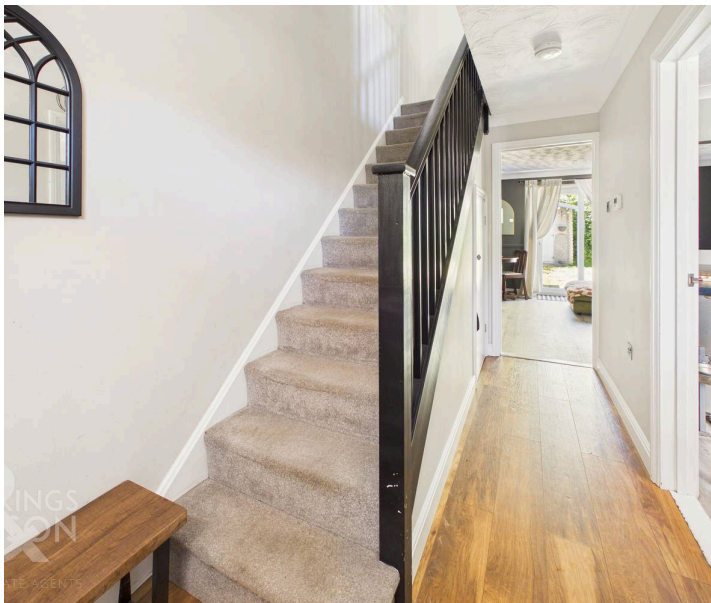
HYBRID ESTATE AGENTS



Maidens Close

Norwich

Tucked away at the end of a quiet CUL-DE-SAC, this beautifully presented SEMI-DETACHED HOUSE enjoys an enviable position OVERLOOKING GREEN SPACE, providing both privacy and a pleasant outlook. Enter the property through a welcoming HALLWAY ENTRANCE, with stairs rising to the first floor and integral storage beneath, perfect for coats and shoes. The FULLY FITTED KITCHEN boasts INTEGRATED APPLIANCES and a convenient hatch opening through to the spacious 13' SITTING ROOM, creating a sociable flow between living and dining areas. The sitting room is flooded with natural light thanks to large SLIDING GLASS DOORS, which open directly onto the rear garden, seamlessly blending indoor and outdoor living. Upstairs, discover TWO DOUBLE BEDROOMS, both featuring INTEGRATED WARDROBES for ample storage, and a stylish THREE PIECE FAMILY BATHROOM complete with a shower over the bath, ideal for busy mornings or relaxing evenings.



Stepping outside, DRIVEWAY PARKING is available for two vehicles, whilst the rear GARDEN is PRIVATE and FULLY ENCLOSED with timber panel fencing and enjoys a TREE-LINED REAR ASPECT.

Council Tax band: B

Tenure: Freehold

EPC Energy Efficiency Rating: C

- Semi-Detached House Overlooking Communal Green Space
- Tucked Away End Of Cul-De-Sac Setting
- Fantastic Decorative Order Throughout
- 13' Sitting Room Opening Directly To The Garden
- Fully Fitted Kitchen With Integrated Appliances
- Two Double Bedrooms With Integrated Wardrobes
- Private & Enclosed Rear Garden Enjoying A Tree-Lined Rear Aspect
- Driveway Parking For Multiple Vehicles

The sought after Norwich suburb of Thorpe St Andrew offers a wide range of amenities nearby including local shops, public houses, doctors surgeries, supermarkets and schools. Thorpe St Andrew is only a short walk, car journey or bus ride into the City Centre and offers great access to the A47/A11 routes, and the new Postwick Hub.



SETTING THE SCENE

Tucked away at the end of a quiet cul-de-sac and set well back from the road, the property offers driveway parking for two vehicles. The frontage overlooks mature green space offering well maintained lawn accented by various shrubs and trees. A low maintenance shingled garden and pathway leads to the main entrance at the front of the home.

THE GRAND TOUR

Stepping inside, the light and airy entrance hall provides an inviting meet and greet space, featuring practical wood effect flooring and integrated storage tucked neatly beneath the stairs. This flooring continues into the fully fitted kitchen, boasting extensive storage through a range of wall and base units and ample worktop space for food preparation. Integrated appliances include an oven, a four burner gas hob and an extractor fan, with further under counter plumbing available for a washing machine and further space for a fridge and freezer. The wall has been thoughtfully opened up to create a sociable, open plan feel between the kitchen and the main living area. The sitting and dining room features continued hard flooring and offers a versatile layout for both soft furnishings and formal dining. This room is flooded with natural light from its rear facing aspect, with uPVC double glazed sliding doors providing direct access to the garden.

Ascending to the carpeted first floor landing, you will find loft access above and doors leading to two well sized double bedrooms. Both rooms feature carpeted flooring, uPVC double glazed windows, and the added benefit of integrated wardrobes. Serving both bedrooms is the centrally located three piece family bathroom, which includes a shower over the bath and tiled splashbacks.

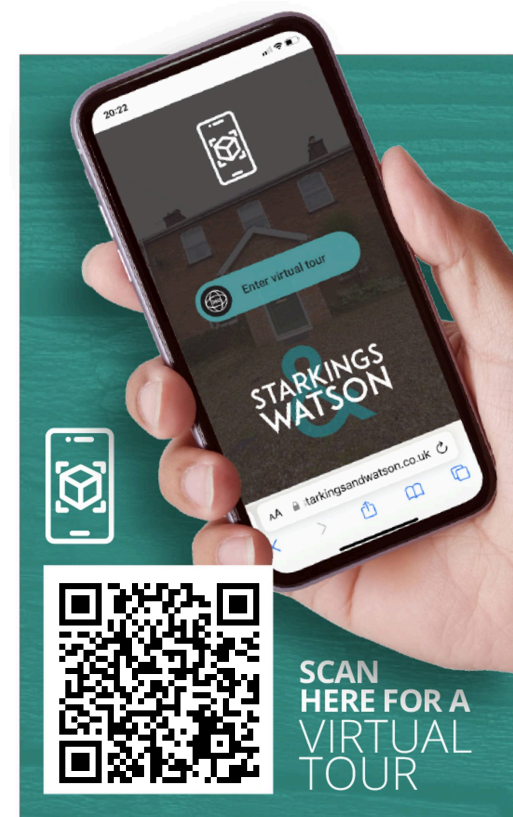
FIND US

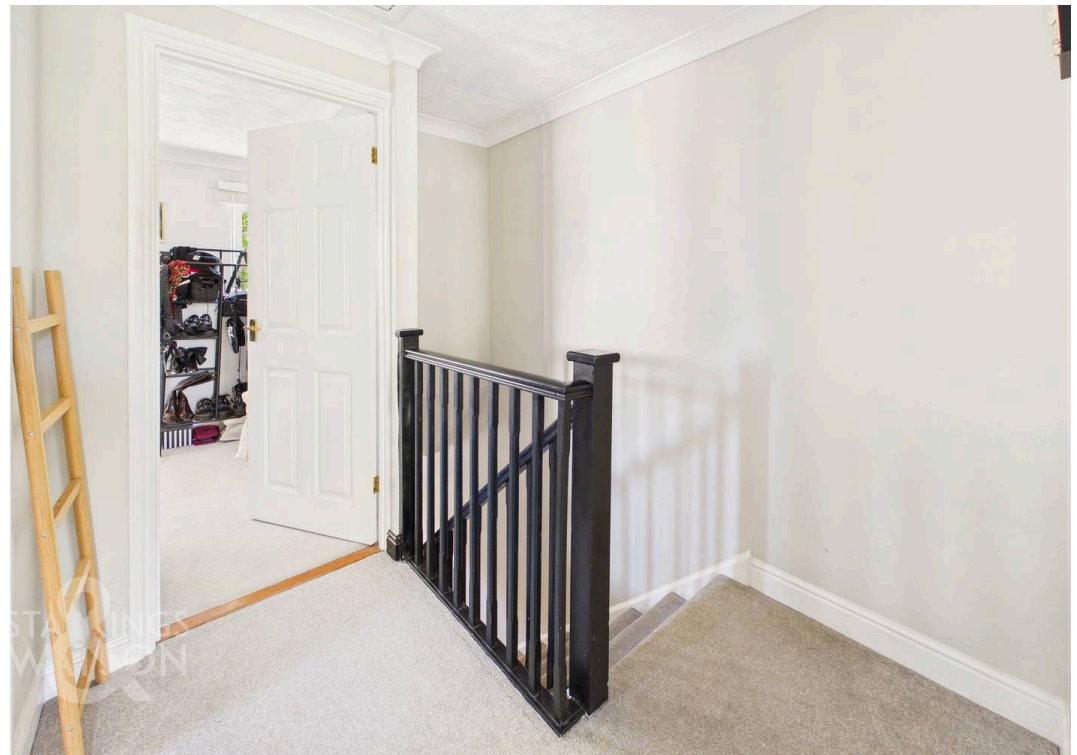
Postcode : NR7 0RS

What3Words : ///book.fumes.spit

VIRTUAL TOUR

View our virtual tour for a full 360 degree of the interior of the property.



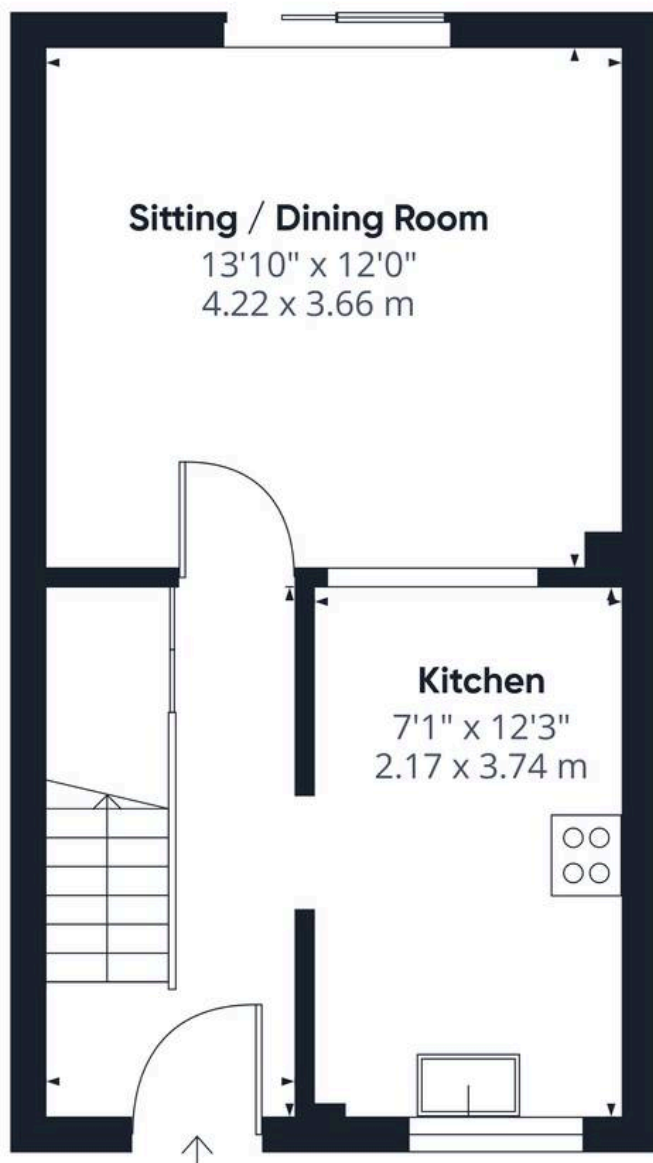




THE GREAT OUTDOORS

Stepping outside, the private rear garden is fully enclosed by timber panel fencing and enjoys a peaceful, tree lined outlook. The space begins with a flagstone patio, perfect for outdoor seating with a side pathway and wooden gate providing convenient access back to the front of the home. The remainder of the garden is primarily laid to lawn and features a substantial summer house, offering a versatile space for enjoying the warmer months or providing additional storage. At the foot of the garden, the landscape is finished with a variety of established shrubs, hedging plantings.





Ground Floor



Floor 1

Approximate total area⁽¹⁾

614 ft²
57.1 m²

(1) Excluding balconies and terraces

Calculations reference the RICS IPMS 3C standard. Measurements are approximate and not to scale. This floor plan is intended for illustration only.

GIRAFFE 360



Starkings & Watson Hybrid Estate Agents

Roxburgh House, Rosebery Business Park Mentmore Way - NR14 7XP

01603 336116 • centralisedhub@starkingsandwatson.co.uk • starkingsandwatson.co.uk/

Disclaimer: Whilst every care has been taken to prepare these sales particulars, they are for guidance purposes only. All measurements are approximate are for general guidance purposes only and whilst every care has been taken to ensure their accuracy, they should not be relied upon and potential buyers are advised to recheck the measurements.