



Long Lane, SE1

£395,000

A highly attractive third-floor flat with a large living room and a separate modern kitchen, a private south-facing balcony, two double bedrooms and a three-piece family bathroom. Sold chain free and further benefitting from permit parking.

Tucked away off Bowling Green Place, this apartment enjoys an unbeatable location. You're just a short walk from Borough High Street, the iconic Borough Market, and London Bridge station, offering excellent transport links. A wealth of shops, cafés, and restaurants are on your doorstep, while the vibrant South Bank is just moments away.

Features

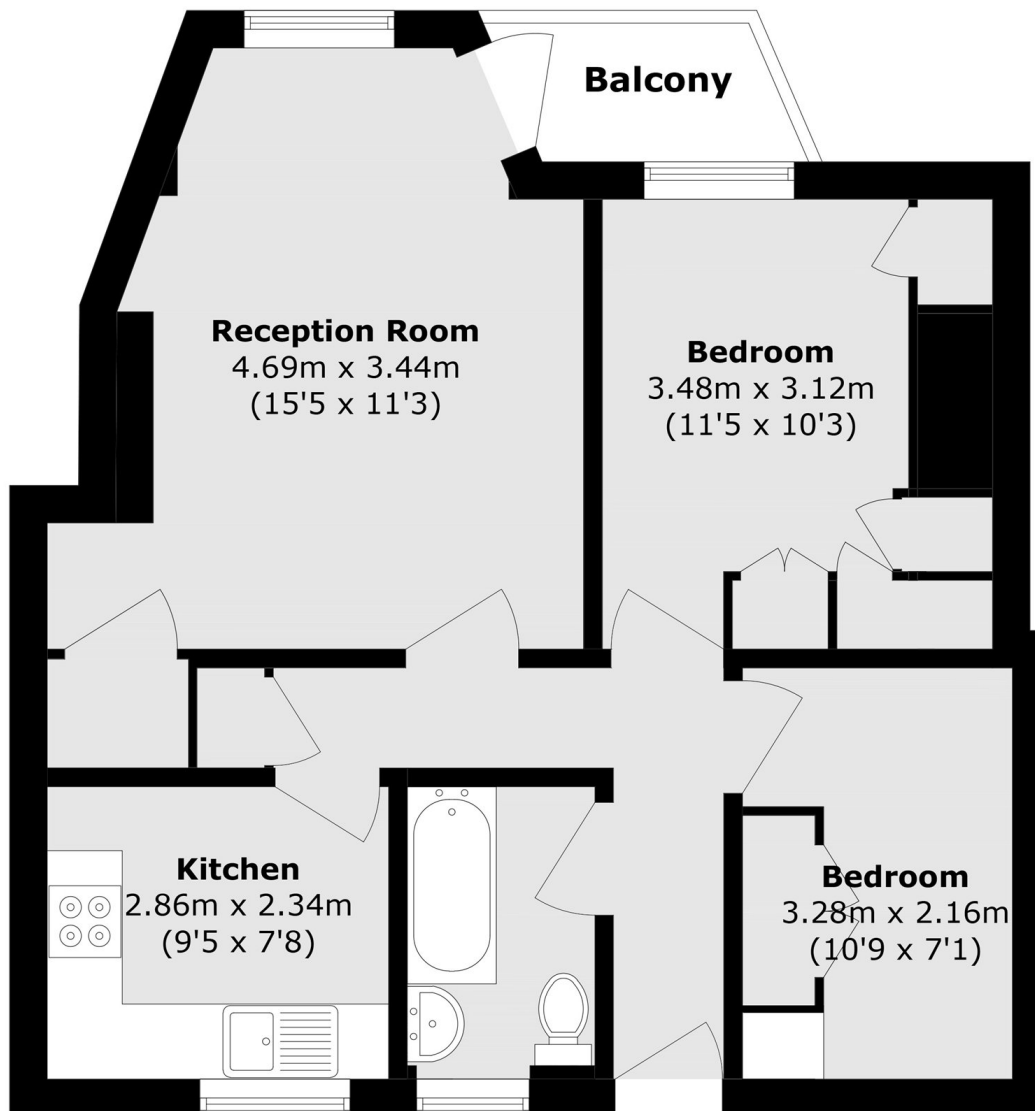
- Very Central Location
- Large Living Room
- Modern Kitchen
- Two Double Bedrooms
- Chain Free Sale



Long Lane, SE1



Long Lane, London, SE1



Total area (approx.): 55.0 sq. m (592.0 sq. ft)

Balcony area (approx.): 2.4 sq. m (25.8 sq. ft)