

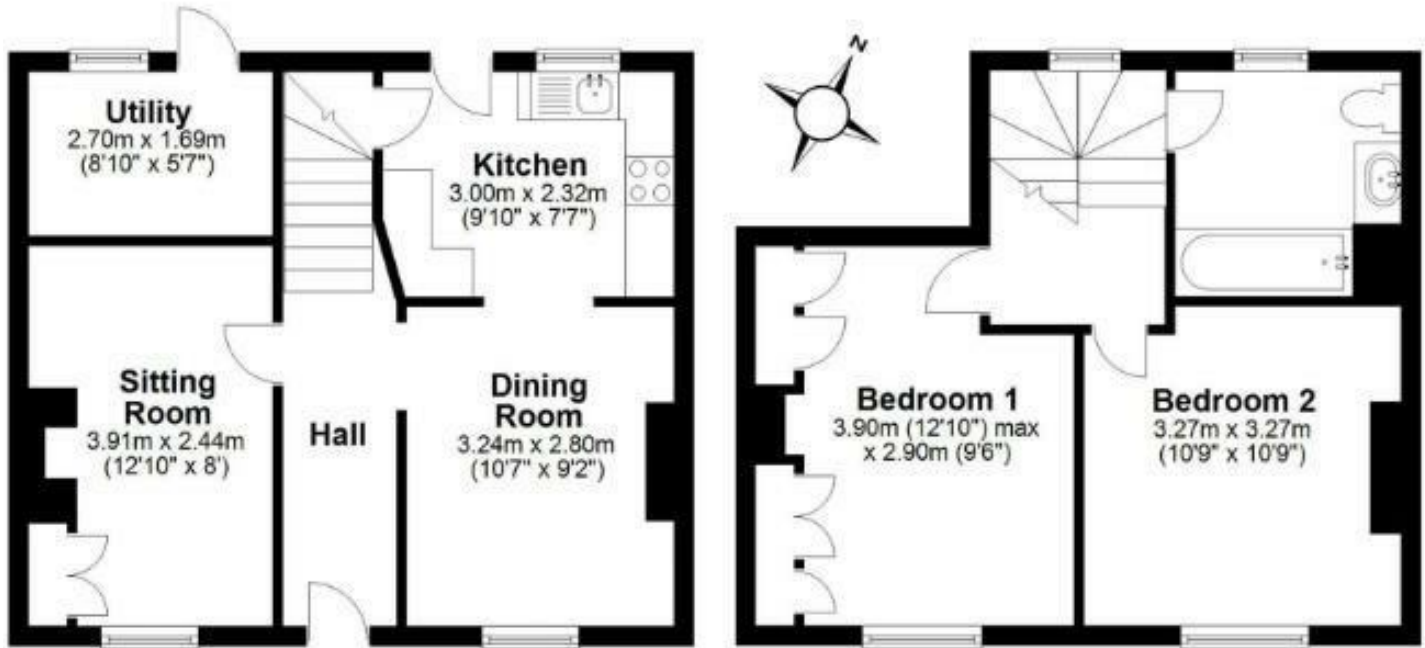


**18 ALPHA STREET
EXETER
EX1 2SP**

£1,200 Per month

A well presented terraced house located in the popular residential area of Heavitree, close to local amenities. The accommodation boasts entrance hall, sitting room, dining room, kitchen with a range of modern units and integral appliances, two good size bedrooms and a modern fitted bathroom. Outside the property has a courtyard style garden to the rear with a separate utility room.





Ground Floor

First Floor

Total area: approx. 72.2 sq. metres (777.2 sq. feet)

18 Alpha Street, Exeter



Energy Efficiency Rating		
	Current	Potential
Very energy efficient - lower running costs		
(92 plus) A		
(81-91) B		85
(69-80) C		
(55-68) D	62	
(39-54) E		
(21-38) F		
(1-20) G		
Not energy efficient - higher running costs		
England & Wales	EU Directive 2002/91/EC	

Agents Note: Whilst every care has been taken to prepare these particulars, they are for guidance purposes only. All measurements are approximate and are for general guidance purposes only and whilst every care has been taken to ensure their accuracy, they should not be relied upon and potential buyers/tenants are advised to recheck the measurements