



HAWTHORNE CRESCENT, SE10

£575,000

Top floor apartment
Two double bedrooms
Two bathrooms
Large balcony/terrace
Short walk to Greenwich park
Energy rating: b

@marshandparsons
marshandparsons.co.uk

MARSH &
PARSONS



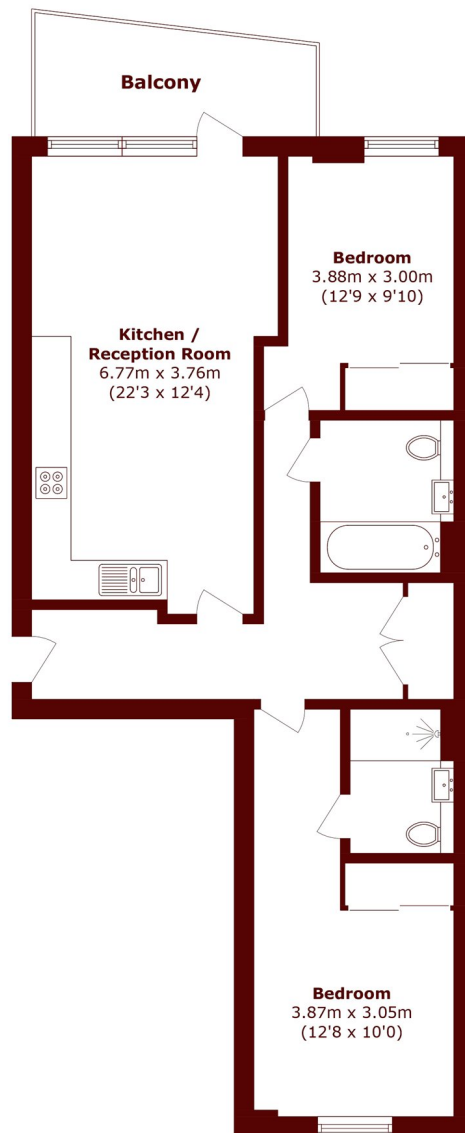
ABOUT THE PROPERTY

Top floor modern apartment featuring a large east facing balcony. The interior briefly comprises an airy living room, open plan kitchen, water softener and a drinking water tap. A family bathroom, two double bedrooms and an en suite. Ample storage, wood flooring, fitted wardrobes and residents have exclusive access to communal gardens, gym, spa, and yoga facilities.

Maze Hill rail station and Greenwich's royal park are a short walk, as well as a range of shopping facilities, coffee shops, deli's and gyms. Greenwich town centre is within easy reach for Cutty Sark DLR station, Greenwich pier, the covered market, and within easy access to the Jubilee tube line for Canary Wharf and central London.



STEP INSIDE HAWTHORNE CRESCENT



Total area (approx.): 72.8 sq. m (783.6 sq. ft)

Total area (approx.): 7.4 sq. m (79.6 sq. ft)

Greenwich
020 8312 8312

Energy Rating: B We aim to make our particulars both accurate and reliable. However, they are not guaranteed; nor do they form part of an offer or contract. If you require clarification on any points then please contact us, especially if you're traveling some distance to view. Please note that appliances and heating systems have not been tested and therefore no warranties can be given as to their good working order

**MARSH &
PARSONS**