



70 Obsdale Park, Alness, IV17 0TR

Offers Over £270,000

🛏 5 🚿 1 🚗 2



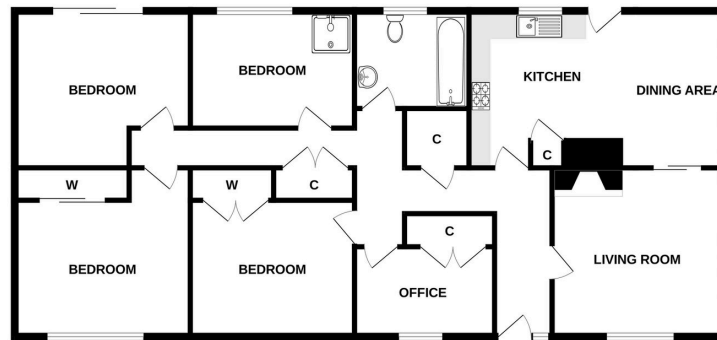
- HOME REPORT UNDER EPC LINK
- QUIET CUL-DE-SAC LINK
- FOUR DOUBLE BEDROOMS
- PRIVATE REAR GARDEN
- SUMMER HOUSE & ATTACHED LEAN TO ENCLOSURE
- IDEAL FOR A VARIETY OF BUYERS
- SPACIOUS ACCOMMODATION
- LARGE DRIVEWAY
- DETACHED GARAGE
- VIEWING RECOMMENDED



A five bedroom detached bungalow with a garage and summer house in the residential area of Alness. Situated on a quiet cul-de-sac with a large driveway for several vehicles. This spacious home, though it would benefit from some modernization, it is a fantastic family home.



GROUND FLOOR



Whilst every attempt has been made to ensure the accuracy of the floorplan contained here, measurements of doors, windows, rooms and any other items are approximate and no responsibility is taken for any error, omission or mis-statement. This plan is for illustrative purposes only and should be used as such by any prospective purchaser. The services, systems and appliances shown have not been tested and no guarantee as to their operability or efficiency can be given.
Made with Mergo 12/2019

