



**Apartment O, Rowton Court, Rowton, Shrewsbury, SY5 9EP**

2 bedroom apartment — £210,000 Leasehold (Share of Freehold)

# Apartment O, Rowton Court, Rowton, Shrewsbury, SY5 9EP

Coopergreenpooks.co.uk

£210,000 Leasehold (Share of Freehold) — 2 bedroom apartment  
sales@cgpooks.co.uk

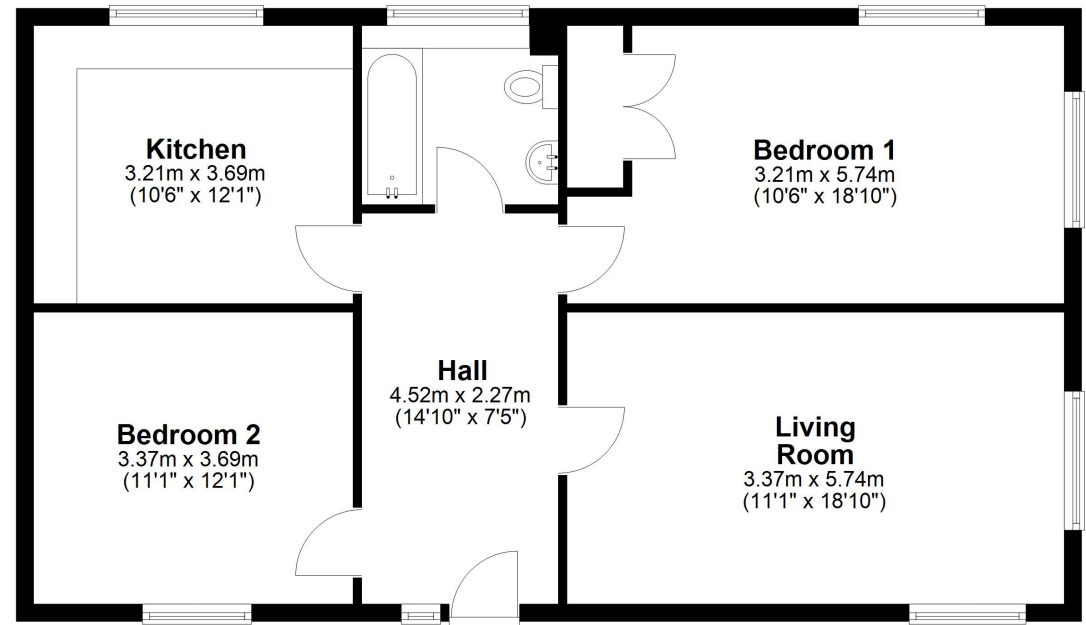
This good-sized 2nd floor apartment is set within the stunning grounds of Rowton Castle with beautiful rural views, vast landscaped communal gardens and a private residents tennis court. The property also comes with a garage and has access to a resident's car park, as well as being just a stone's throw from the excellent Rowton Castle country club and spa.

## KEY FEATURES

- External steps lead up to a terrace and balcony where there is access to the dining hall.
- Living room with windows to two elevations and a separate kitchen/ breakfast room.
- Two double bedrooms and a bathroom.
- Double glazed windows and an electric central heating system with updated boiler.
- Large private loft space, which the majority of the other apartments have all converted into further accommodation.
- Residents and guest car park, along with a private single garage.
- Use of the stunning and extensive private grounds and tennis court. The neighbouring Rowton Castle Country Club and Spa is also available to residents at a reduced rate.
- The impressive Rowton Castle Hotel, restaurant and bar is also conveniently just a few minutes walk from the apartment.
- Located just 5 miles from Shrewsbury and with excellent road links to the Welsh hills.
- No onward chain.

## Ground Floor

Approx. 79.5 sq. metres (856.0 sq. feet)



Total area: approx. 79.5 sq. metres (856.0 sq. feet)







# Apartment O, Rowton Court, Rowton, Shrewsbury, SY5 9EP

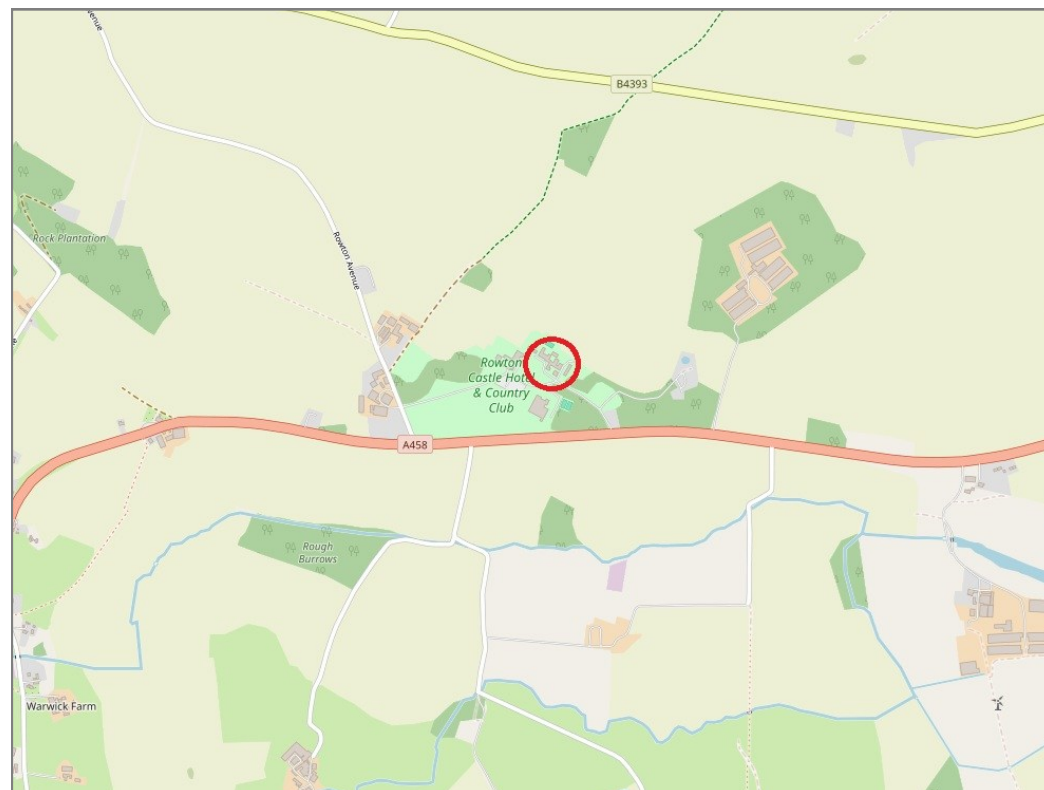
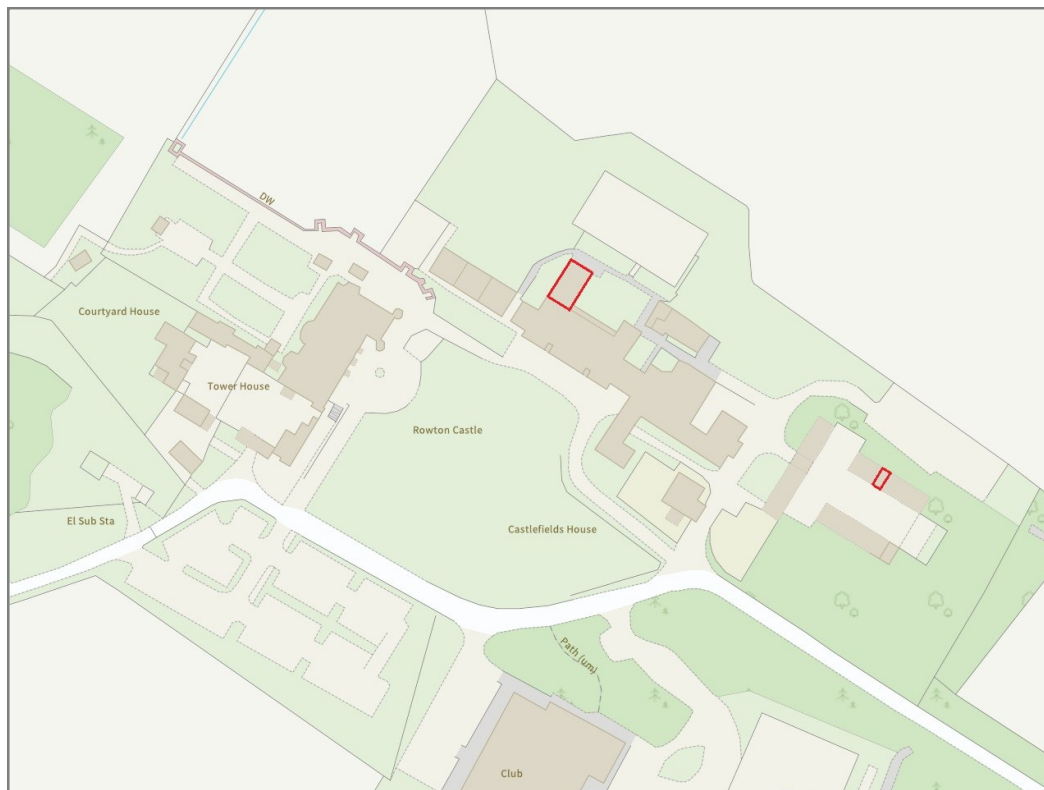
£210,000 Leasehold (Share of Freehold) — 2 bedroom apartment

sales@cgpooks.co.uk

rightmove 

 OnTheMarket.com

 **RICS**  
Regulated by RICS



**BOUNDARIES NOT CONFIRMED**

Local Authority	<b>Shropshire Council</b>
Council Tax	<b>Band B</b>
EPC Band	<b>Band D</b>
Services	<b>Mains water, electricity and drainage are connected. Electric heating.</b>

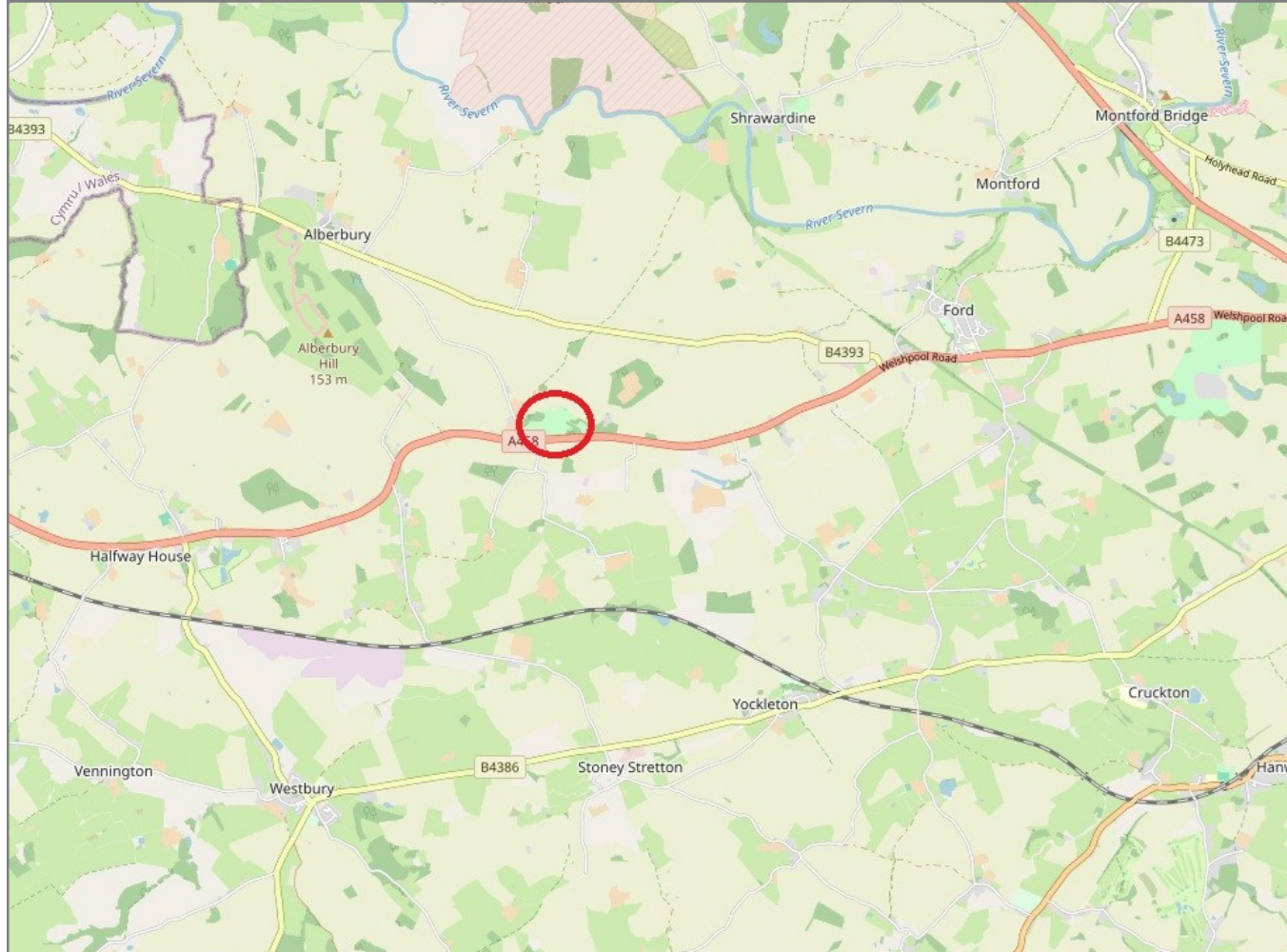
Tenure	<b>Leasehold (Share of Freehold)</b>
Lease Length	<b>189 years from 1979</b>
Service Charge	<b>£150 per month</b>

# Apartment O, Rowton Court, Rowton, Shrewsbury, SY5 9EP

Coopergreenpooks.co.uk

£210,000 Leasehold (Share of Freehold) — 2 bedroom apartment

sales@cgpooks.co.uk



**IMPORTANT NOTICE:** Cooper Green Pooks for themselves and for the lessors or vendors of this property whose agents they are give notice that: 1 No appliances, services or service installations have been tested and no warranty as to suitability or serviceability is implied. Any prospective purchaser or lessee is advised to obtain verification from their surveyor or solicitor. 2. The particulars are set out as a general outline only for the guidance of the intended purchasers or lessees and do not constitute, nor constitute part of, an offer or contract. 3. All descriptions, reference to condition and necessary permissions for use and occupation and other details are given in good faith and are believed to be correct but any intending purchasers or lessees should not rely on them as statements or representation of fact but satisfy themselves by inspection or otherwise as to the correctness of each of them. 4. No person in the employment of Cooper Green Pooks has any authority to make or give any representation or warranty whatsoever in relation to this property. 5. All rentals and prices are quoted exclusive of Stamp Duty, legal and surveyors fees and any other associated purchasers or lessees costs. 6. Floor plans are indicative only and should not be relied on. 7. The plan showing the boundary of the property is indicative only and has not been checked against the legal title so should not be relied on. 8. All dimensions, floor areas and site areas are only approximate and should not be relied on. Dimensions are generally maximum room dimension.