



Leigh Road, Hildenborough – TN11 9AG

Guide Price £645,000

est. 1828  
**bracketts**



Situated in the highly sought-after village of Hildenborough, this beautifully presented 1930s semi-detached family home offers a wonderful blend of character, style and modern living. Ideally positioned within easy reach of the highly regarded Stocks Green Primary School and the mainline station (approximately 1.4 miles away), it is perfectly suited to both families and commuters.

The accommodation comprises an inviting entrance hall, a cloakroom/WC, and a charming front-aspect sitting room featuring a beautiful bay window. To the rear, the bespoke solid wood kitchen is fitted with timeless cabinetry and granite worktops, flowing seamlessly into the open-plan dining area with doors opening onto a decked terrace, creating an ideal space for both everyday living and entertaining.

On the first floor are three well-proportioned bedrooms, all served by a contemporary shower room.

Outside, the property enjoys a generous rear garden, ideal for outdoor living, with a spacious decked seating area, mature planting and a delightful outlook. A driveway provides off-road parking for one vehicle and leads to an oversized single garage.

A particular highlight is the detached bespoke cedar home office, located at the rear of the garden. Fully insulated and equipped with power and lighting, this impressive workspace enjoys a peaceful setting with attractive views over mature trees and neighbouring countryside, making it ideal for home working or as a versatile studio.





# Leigh Road, Hildenborough, Tonbridge, TN11

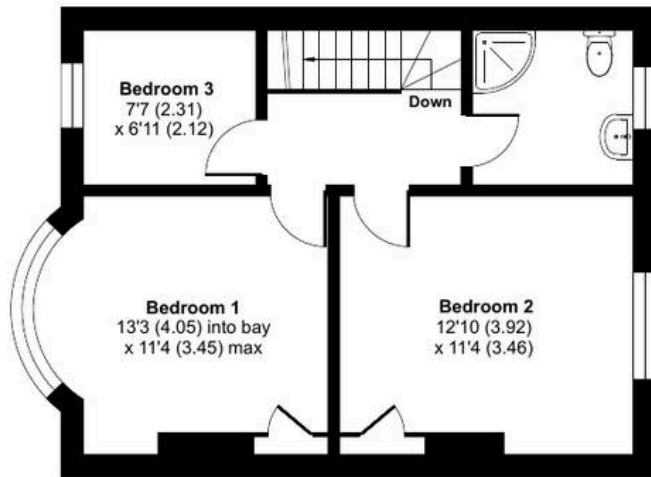
Approximate Area = 913 sq ft / 84.8 sq m

Garage = 248 sq ft / 23 sq m

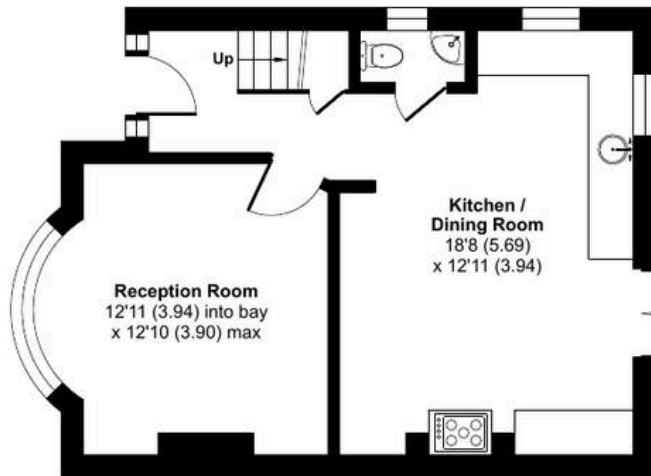
Outbuilding = 121 sq ft / 11.2 sq m

Total = 1282 sq ft / 119 sq m

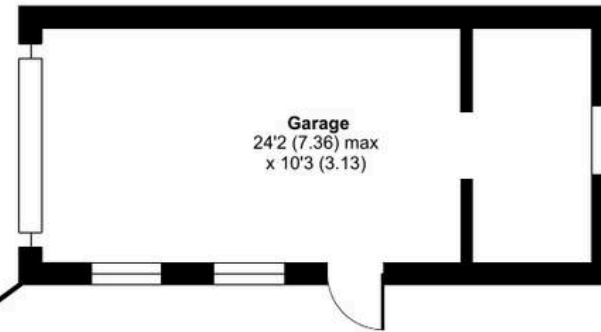
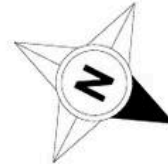
For identification only - Not to scale



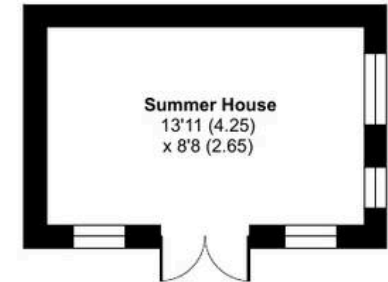
FIRST FLOOR



GROUND FLOOR



Garage  
24'2 (7.36) max  
x 10'3 (3.13)



Summer House  
13'11 (4.25)  
x 8'8 (2.65)

Garden  
Approximate  
196'10 (60.00)  
x 45'1 (13.75)

