



65 San Marcos Drive, Chafford Hundred, Grays, Essex, RM16 6LU  
**£1,600 Per month**



65 San Marcos Drive, Chafford Hundred, Grays, Essex, RM16 6LU

**£1,600 Per month**

Available soon is this well presented two bedroom ground floor apartment in Chafford Hundred.

Immaculate throughout and well looked after, this would suit anyone that is looking for somewhere homely, that has great transport links across the local area or into London.

With two great sized double bedrooms (both with built in wardrobes), a tiled bathroom (with plenty of storage) and a separate living room and kitchen (that includes white goods).

With its own private entrance to the rear of the block and an allocated parking space very close by.

All within walking distance to Chafford Hundred train station with c2c trains into London, as well as having the benefit of Lakeside Shopping Center nearby with an abundance of retail and restaurant choices.

Offered part furnished.

Available End of June.

## Description

Available soon is this well presented two bedroom ground floor apartment in Chafford Hundred.

Immaculate throughout and well looked after, this would suit anyone that is looking for somewhere homely, that has great transport links across the local area or into London.

With two great sized double bedrooms (both with built in wardrobes), a tiled bathroom (with plenty of storage) and a separate living room and kitchen (that includes white goods).

With its own private entrance to the rear of the block and an allocated parking space very close by.

## Situation

All within walking distance to Chafford Hundred train station with c2c trains into London, as well as having the benefit of Lakeside Shopping Center nearby with an abundance of retail and restaurant choices.

Offered part furnished (sofa and two beds).

Available from the end of June.

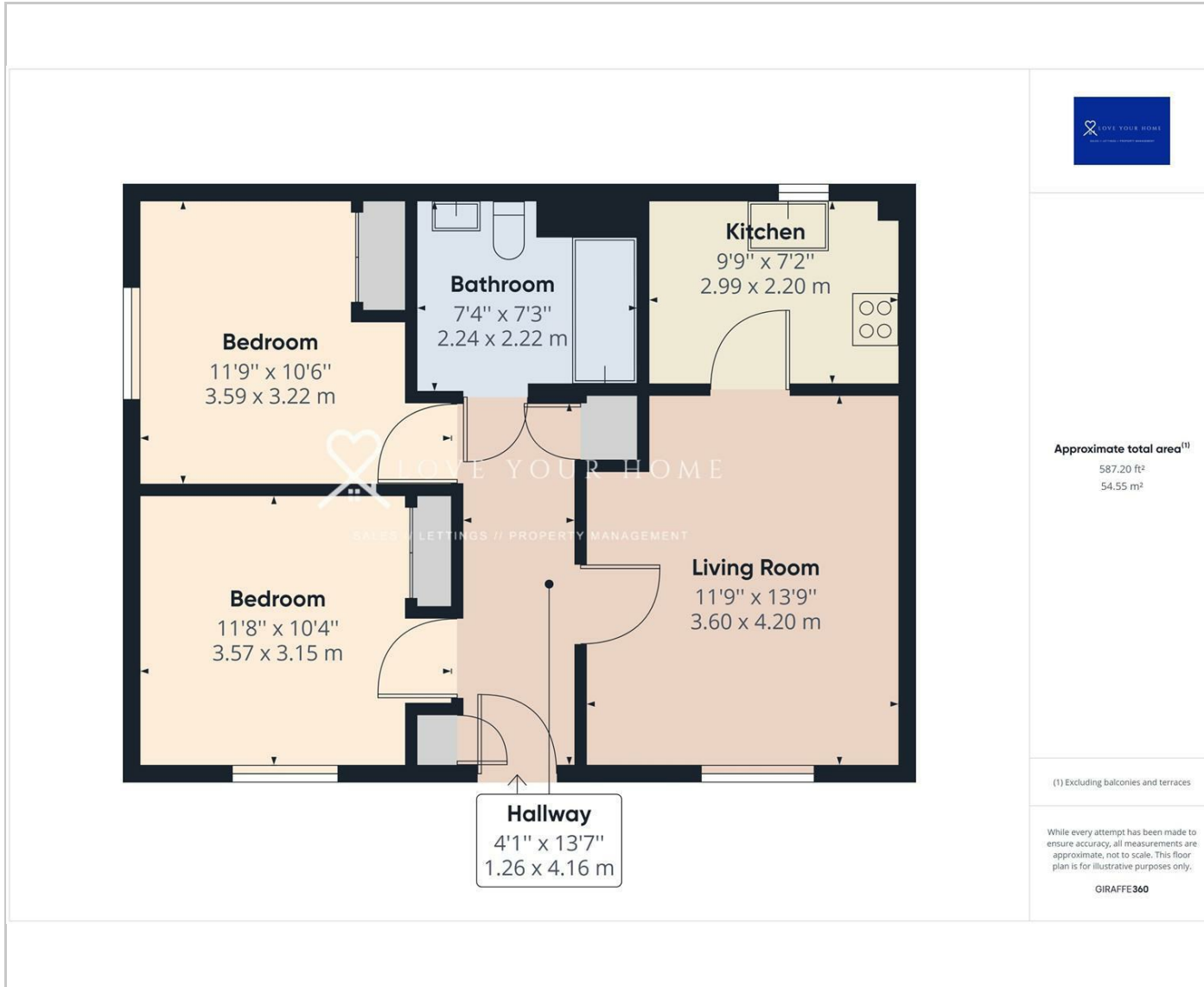
Part furnished

Council Tax Band: C

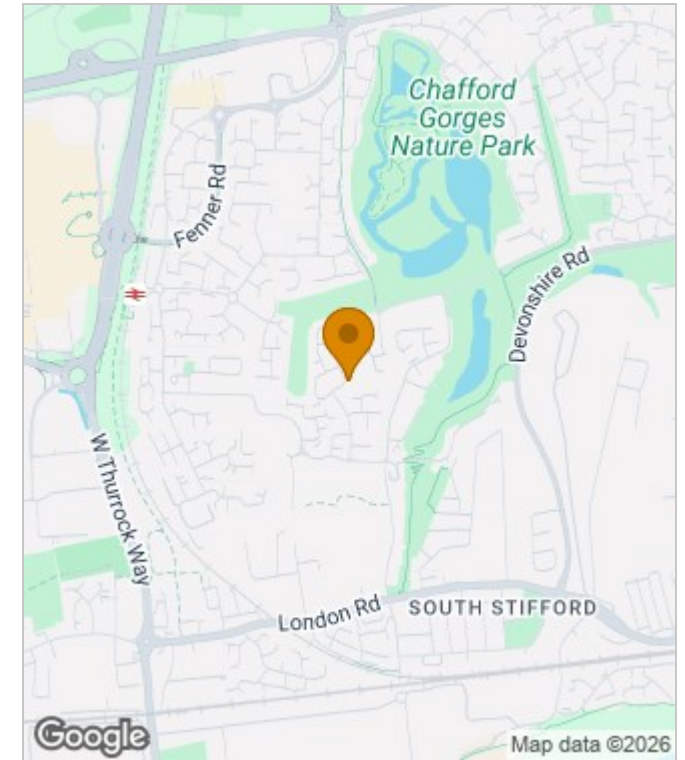
Available: 27th June 2026



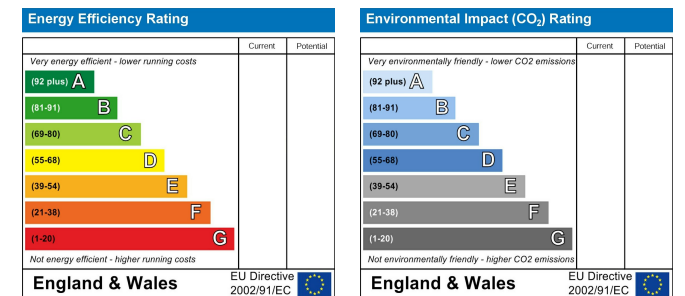
## Floor Plans



## Area Map



## Energy Performance Graph



These particulars, whilst believed to be accurate are set out as a general outline only for guidance and do not constitute any part of an offer or contract. Intending purchasers should not rely on them as statements of representation of fact, but must satisfy themselves by inspection or otherwise as to their accuracy. No person in this firm's employment has the authority to make or give any representation or warranty in respect of the property.

The Nucleus Brunel Way, Dartford, Kent, DA1 5GA

Tel: 02081758868 Email: [property@lyhpropertyconsultants.com](mailto:property@lyhpropertyconsultants.com) [www.lyhpropertyconsultants.com](http://www.lyhpropertyconsultants.com)