



Connells

The Stillhouse Stillhouse Lane
Bristol



Property Description

Situated on a quiet cobbled street in the heart of old Bedminster, this superb three-bedroom modern apartment offers generous space, contemporary finishes and an unbeatable BS3 location just moments from East Street.

Inside, the home features a bright open-plan kitchen and living area, finished to a high standard and opening onto a sun-trap balcony—a perfect spot for morning coffee or evening downtime. The principal bedroom benefits from its own en-suite shower room, while two further double bedrooms provide excellent flexibility for sharers, guests, home working or rental potential. A modern family bathroom and a separate utility cupboard complete the layout.

The position is one of the strongest selling points. Stillhouse Lane connects directly to East Street, giving instant access to supermarkets, cafés, pubs, gyms and Bedminster's growing food scene. North Street, with its independent shops, bars and restaurants, is also within easy reach, as are the Harbourside and Wapping Wharf.

Transport links are excellent. Bedminster Station is a short walk away, offering quick rail access to Temple Meads and wider connections. Regular bus routes run along East Street and Dalby Avenue, while dedicated cycle paths lead straight into the city centre. For drivers, the A370, A38 and routes towards the M5 are all easily accessible.

A spacious, well-located BS3 apartment offering strong lifestyle appeal and superb connectivity—ideal for owner-occupiers and investors alike.

Kitchen/Living Room

78.5sqm/845sqft

Modern kitchen area with gloss finish matching base and head units. Integrated oven and electric hob with stainless steel extractor fan over with tiled splashback. Integrated fridge/freezer. Ceramic sink and drainer with mixer tap, large double glazed window and wood effect flooring.

Bedroom One

11.5sqm/124sqft

Great sized main bedroom decorated in a modern style. Carpeted throughout with double glazed window and single panel wall-mounted radiator. Plenty of space for a large double bed and freestanding furniture. Currently shown in pictures with mint feature wall.

En-Suite

Moderb bathroom suite comprising integrated low level WC, pedestal wash hand basin and double shower tray with glass screen. Large vanity mirror with shelf, and electric razor plug-in. Fully tiled walls and flooring.

Bedroom Two

12.3sqm/124sqft

Well-sized second bedroom offering ample space ofr large double and free-standing furniture. Large double glazed window to side. Carpeted throughout. Currently shown with blue feature wall.

Bedroom Three

10.4sqm/112sqft

Well-sized third bedroom. Modern finish throughout with double glazed window, and single panel radiator underneath. Plenty of room for a large double and free-standing furniture. Currently shown with mint feature wall and multicoloured chair.

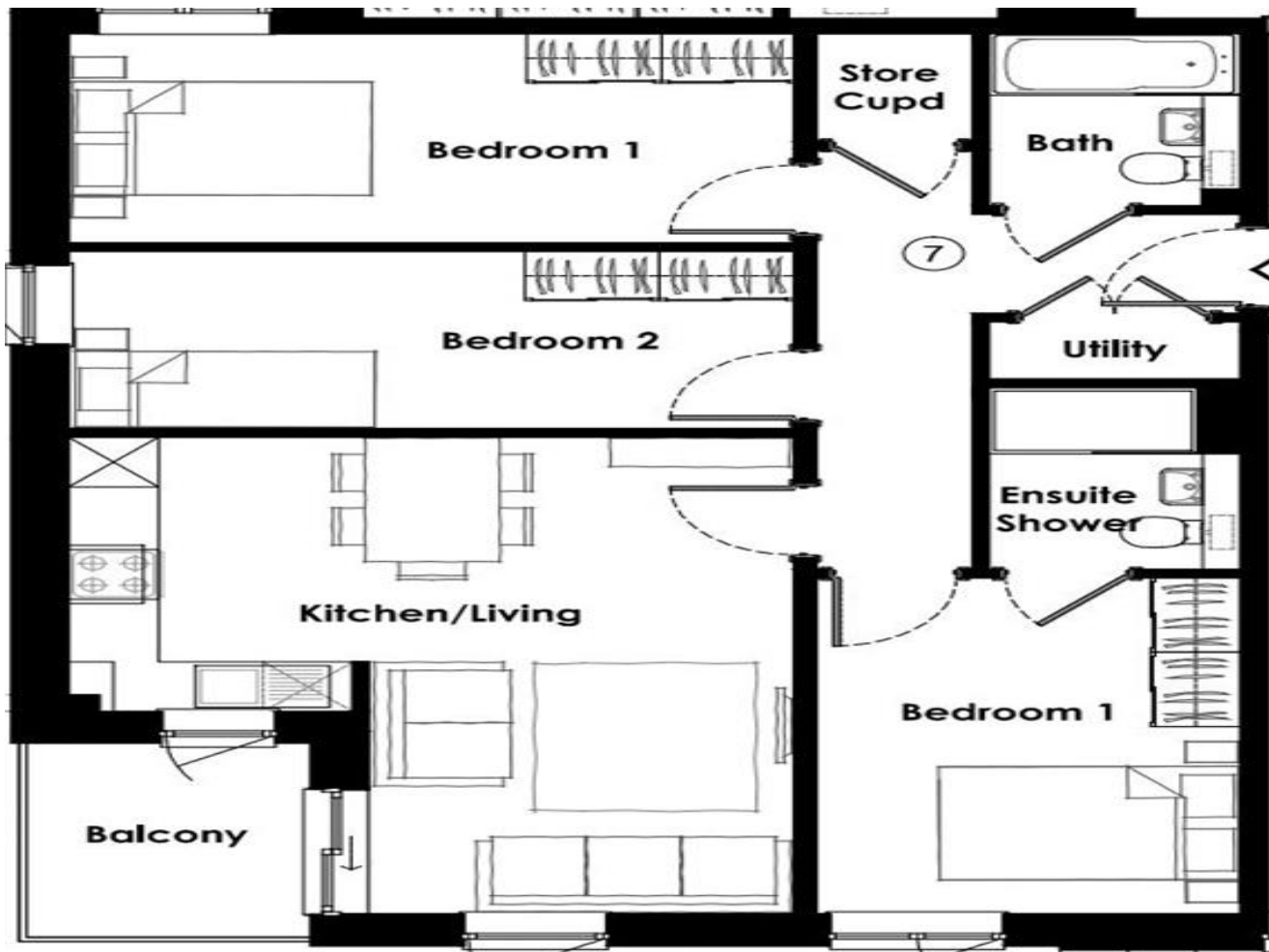
Bathroom

Large main bathroom with built-in low level WC, pedestal wash hand basin, panelled bath with shower over and glass screen. Fully tiled walls and flooring, large vanity mirror and shelf.

Balcony

Private balcony with glass surround, plenty of space for outdoor furniture.





To view this property please contact Connells on

T 0117 966 4278

E southville@connells.co.uk

243 North Street Southville
BRISTOL BS3 1JN

EPC Rating: C

Council Tax
Band: B

Service Charge:
1656.00

Ground Rent:
250.00

Tenure: Leasehold

view this property online connells.co.uk/Property/BMR312254

This is a Leasehold property. We are awaiting further details about the Term of the lease. For further information please contact the branch. Please note additional fees could be incurred for items such as Leasehold packs.



1. MONEY LAUNDERING REGULATIONS Intending purchasers will be asked to produce identification documentation at a later stage and we would ask for your co-operation in order that there will be no delay in agreeing the sale. 2. These particulars do not constitute part or all of an offer or contract. 3. The measurements indicated are supplied for guidance only and as such must be considered incorrect. Potential buyers are advised to recheck measurements before committing to any expense. 4. We have not tested any apparatus, equipment, fixtures, fittings or services and it is in the buyers interest to check the working condition of any appliances.

Connells Residential is registered in England and Wales under company number 1489613, Registered Office is Cumbria House, 16-20 Hockliffe Street, Leighton Buzzard, Bedfordshire, LU7 1GN. VAT Registration Number is 500 2481 05.

See all our properties at www.connells.co.uk | www.rightmove.co.uk | www.zoopla.co.uk

Property Ref: BMR312254 - 0005