



Randolph Avenue

Little Venice, W9

£4,500 per month
(£1,038.46 per week)

A lovely family house with a stunning garden in this lovely terrace moments to Warwick Avenue Station. Comprising reception room, smart modern kitchen, separate dining room, three double bedrooms (one en-suite), family bathroom & downstairs WC.



Randolph Avenue

Little Venice, W9

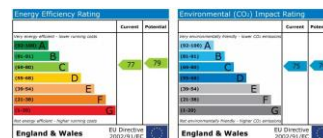
- Modern House With Garden
- Pet friendly
- 3 Bedrooms
- 2 Bathroom
- Close to Canal, Cafes & Transport
- Private Parking
- EPC C



A lovely family house with a stunning garden in this lovely terrace moments to Regents Canal and the shops and cafes of Little Venice and Warwick Avenue Underground Station.

The property comprises of a wonderful front garden, reception room with wood floors, smart modern kitchen, separate dining room, three double bedrooms (one en-suite), family bathroom and downstairs WC. In addition there is off street parking and a large garden.

Minimum Term: 12 months
Deposit Required: 6 weeks
Local Authority: Westminster City Council
Council Tax Band: G
EPC Rating: C
Unfurnished



Chestertons Little Venice Lettings

26 Clifton Road
 Maida Vale
 London
 W9 1SX
 littlevenice@chestertons.co.uk
 02072662369
 chestertons.co.uk

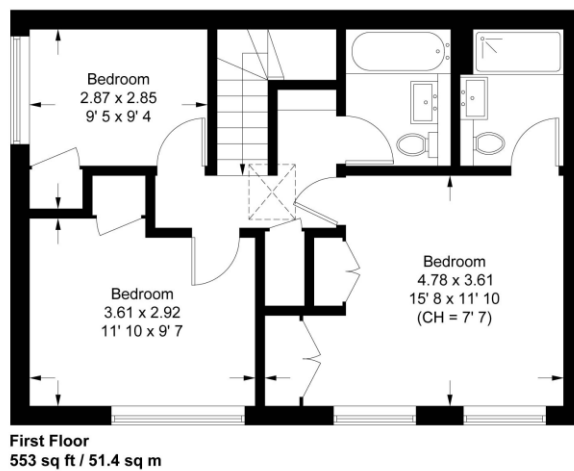
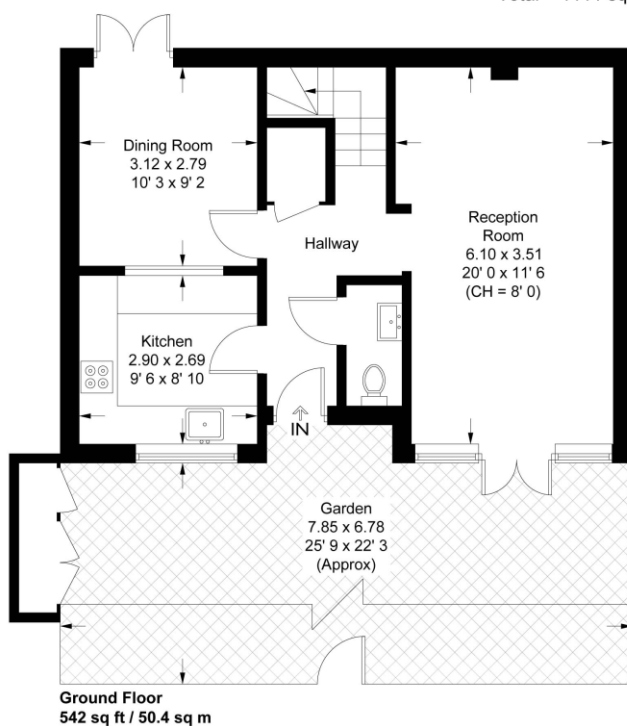
Additional tenant charges apply (fees apply to non-AST tenancies only)
 Tenancy Agreement Fee: £300
 References per Tenant/Guarantor: £60
 Inventory check (approx. £100 – £250 inc. VAT)
 chestertons.co.uk/property-to-rent/applicable-fees

Randolph Avenue

Approximate Gross Internal Area = 1095 sq ft / 101.8 sq m

Store = 16 sq ft / 1.5 sq m

Total = 1111 sq ft / 103.3 sq m



Not to scale, for guidance only and must not be relied upon as a statement of fact
All measurements and areas are approximate only and have been prepared in
accordance with the current edition of the RICS Code of Measuring Practice

