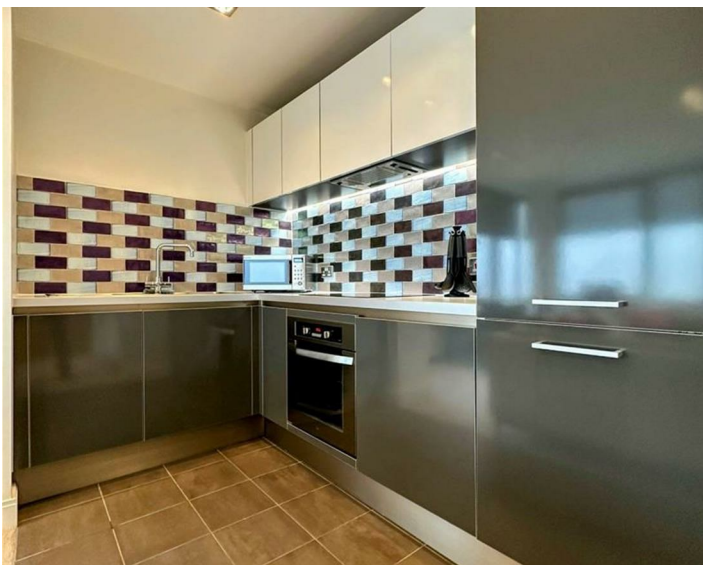




Apt A1207 One Park West, Liverpool, L1 8LP  
£1,450 PCM

WWW.  
cityresidential  
.co.uk



## About the Property

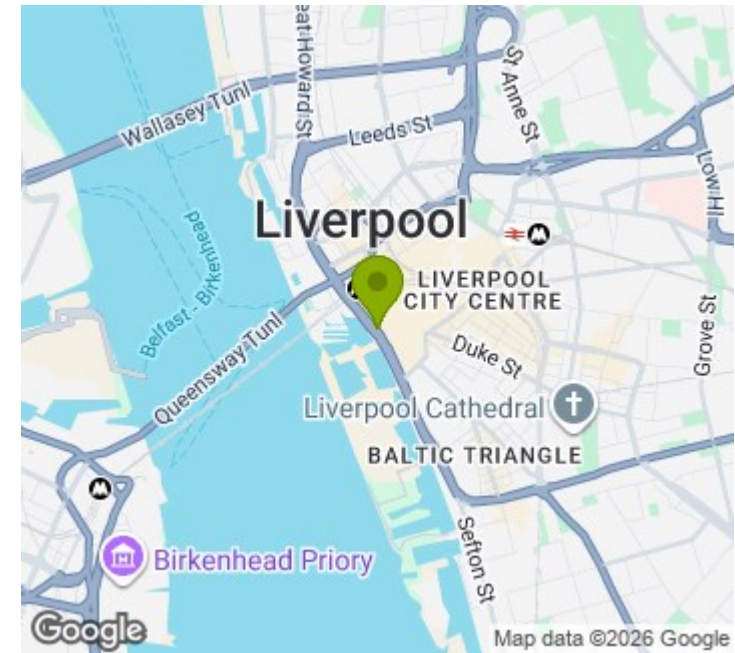
Available to Let is this well presented two bedroom apartment located in the fantastic One Park West Development. The apartment briefly comprises; entrance hall, open plan living/dining room, fully fitted kitchen, master bedroom with en-suite, second bedroom and well appointed main bathroom. The apartment benefits from stunning views.

This development is serviced by a lift to all floors.

EPC Rating - B. Council Tax Band - C. A deposit amount of £1673 is payable upon moving in. Call us now to arrange a viewing.

Available from June 1st.

- Fully Furnished
- Brilliant Location
- 2 Bedrooms
- Deposit Payable £1673
- EPC Rating - B
- Council Tax Band - C
- Available from June 1st



## Energy Efficiency Rating

	Current	Potential
Very energy efficient - lower running costs		
(92 plus) <b>A</b>		
(81-91) <b>B</b>	<b>81</b>	<b>83</b>
(69-80) <b>C</b>		
(55-68) <b>D</b>		
(39-54) <b>E</b>		
(21-38) <b>F</b>		
(1-20) <b>G</b>		
Not energy efficient - higher running costs		
<b>England &amp; Wales</b>	EU Directive 2002/91/EC	



City Residential

81/87 Victoria Street, The Old Haymarket, Liverpool L1 6DG

T: 0151 231 6100 F: 0151 231 6105

E: sales@cityresidential.co.uk



WWW.  
cityresidential  
.co.uk