





Rowan Drive, Rugby  
Guide Price £435,000

🛏 4 🚿 2 🛋 2



- Detached Property
- Cul de Sac Location
- Sought After Location
- En Suite
- Integral Garage
- Four Bedrooms
- Separate lounge/Dining Room
- Fitted Wardrobes
- Garden Room
- Early Viewing Recommended





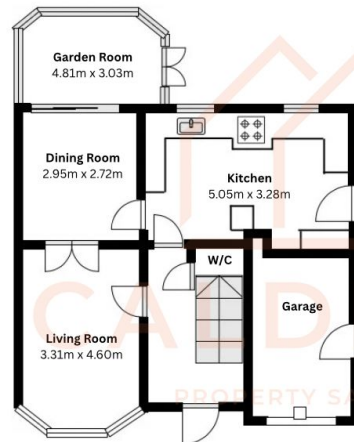


Caldecott Property are proud to present this extended four-bedroom detached family home, situated in a desirable area of Bilton. Ideally positioned within walking distance of local amenities including well-regarded schools, a pub and shops, the property also benefits from excellent access to major road networks such as the M1, M6 and A45, making it ideal for families and commuters alike. The ground floor offers generous and versatile living accommodation and a bright garden room overlooking the rear garden. An integral garage provides secure parking or additional storage.

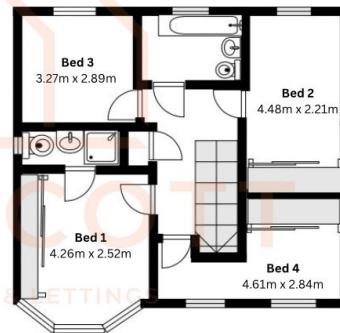
To the first floor are four well-proportioned bedrooms, including the master bedroom. The property enjoys a pleasant, well-maintained garden, perfect for family life and outdoor entertaining.



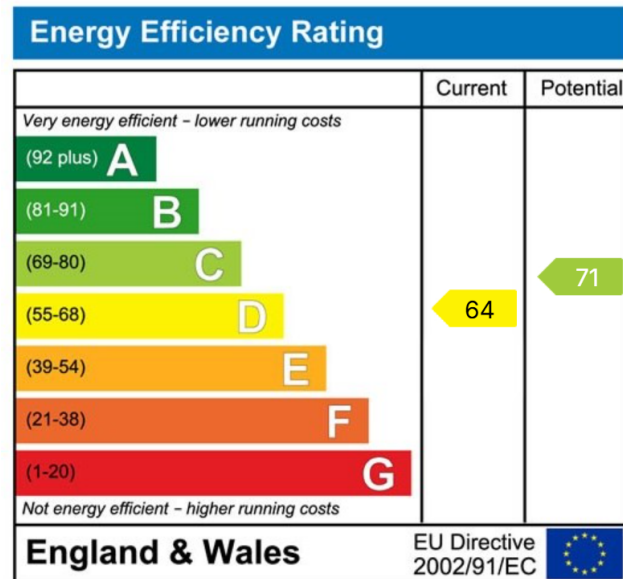
Ground Floor



First Floor



For illustrative purposes only.  
Measurements are approximate and floorplan should be used as a guide.



Phone Number:

01788 221994

Email:

[Hello@caldecottproperty.co.uk](mailto:Hello@caldecottproperty.co.uk)

Website:

[www.caldecottproperty.co.uk](http://www.caldecottproperty.co.uk)